

THE CRESTWOOD



Exterior A



Exterior B

2,299 - 2,893 sq. ft.

3 - 5 Bedrooms

2 - 4 Full Baths

1 Half Bath

2 - 3 Car Garage

Shane



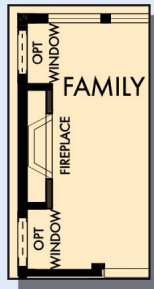
We're living our fairytale thanks to David Weekley

We can't say enough about the level of quality and care we received while building our home. Our builder was with us every step of the way to make sure our every need and desire was being met! The team truly went above and beyond at every turn to give us the home of our dreams! We will definitely recommend David Weekley to anyone looking to build a new home!

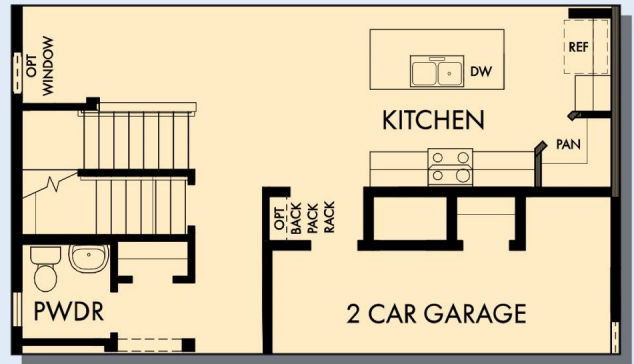
**David Weekley
Homes**

THE CRESTWOOD

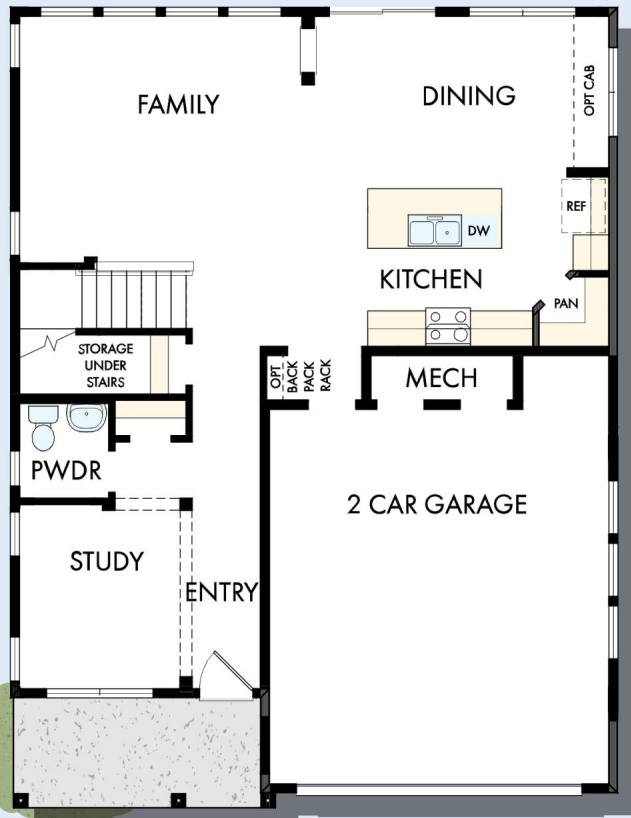
2,299 - 2,893 sq. ft. • 3 - 5 Bedrooms • 2 - 4 Full Baths • 1 Half Bath • 2 - 3 Car Garage



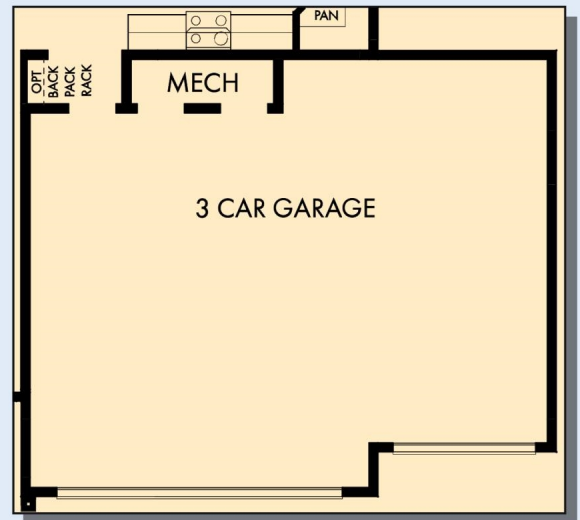
OPTIONAL
WALL FIREPLACE
AT FAMILY



FIRST FLOOR WITH OPTIONAL BASEMENT



FIRST FLOOR

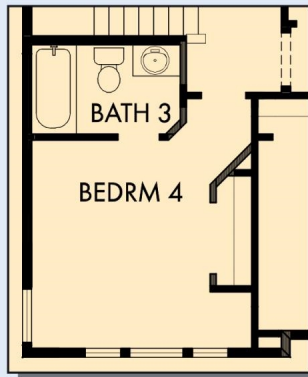


OPTIONAL 3 CAR GARAGE

THE CRESTWOOD



OPTIONAL BEDROOM 4
AT RETREAT



OPTIONAL BEDROOM 4
WITH BATH 3 AT RETREAT



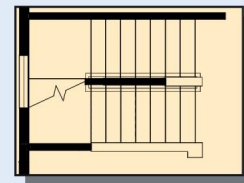
OPTIONAL SLIDE-IN TUB
WITH SEPARATE SHOWER
AT OWNER'S BATH



OPTIONAL SUPER SHOWER
AT OWNER'S BATH



SECOND FLOOR

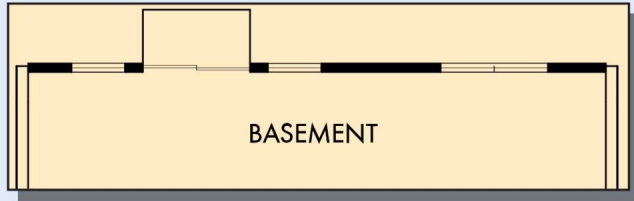


SECOND FLOOR WITH
OPTIONAL THIRD FLOOR
BONUS

For additional options, please visit DavidWeekleyHomes.com

DavidWeekleyHomes.com

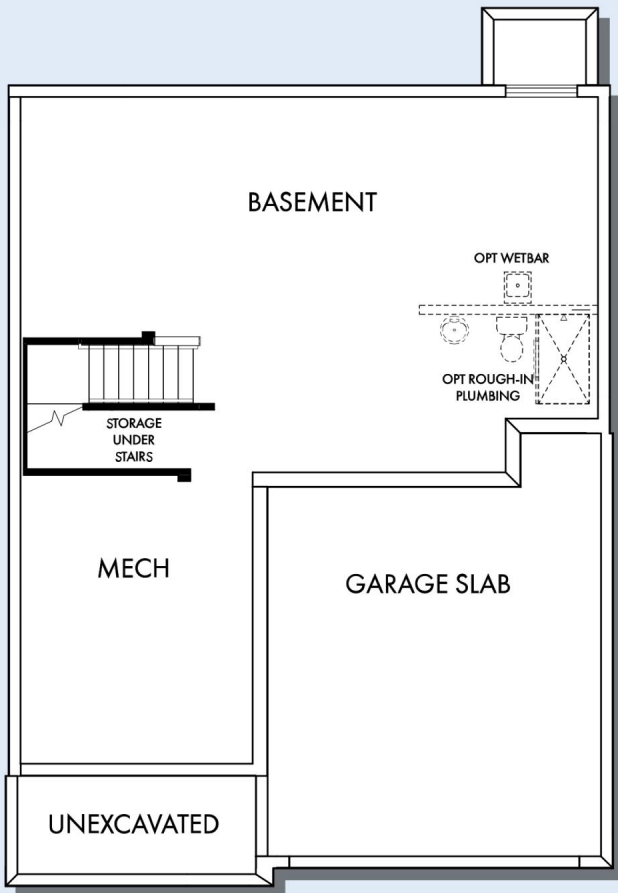
THE CRESTWOOD



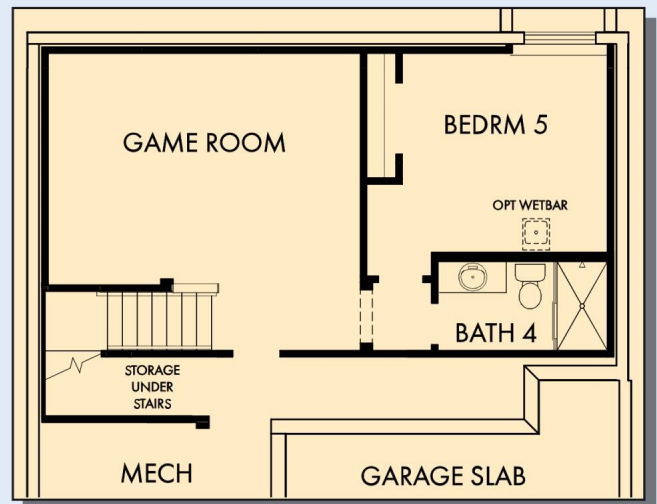
OPTIONAL WALKOUT BASEMENT



OPTIONAL DAYLIGHT BASEMENT



BASEMENT



OPTIONAL GAME ROOM WITH BEDROOM 5 AND BATH 4 AT BASEMENT

For additional options, please visit DavidWeekleyHomes.com

See a David Weekley Homes Sales Consultant for details. Prices, plans, dimensions, features, specifications, materials, and availability of homes or communities are subject to change without notice or obligation. Illustrations are artist's depictions only and may differ from completed improvements. Copyright © 2024 David Weekley Homes - All Rights Reserved. Minneapolis/St. Paul, MN

DavidWeekleyHomes.com

