

THE FONTANELLE



6776SAN-C

Exterior C

2,675 - 2,738 sq. ft.

3 Bedrooms

2 Full Baths

1 Half Bath

2 - 3 Car Garage



6776SAN-D

Exterior D

Shane



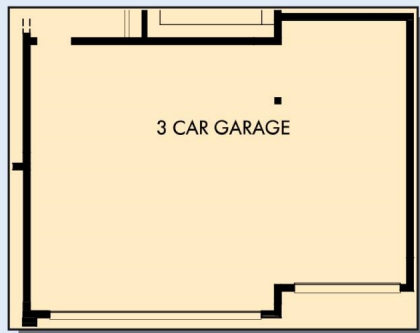
We're living our fairytale thanks to David Weekley

We can't say enough about the level of quality and care we received while building our home. Our builder was with us every step of the way to make sure our every need and desire was being met! The team truly went above and beyond at every turn to give us the home of our dreams! We will definitely recommend David Weekley to anyone looking to build a new home!

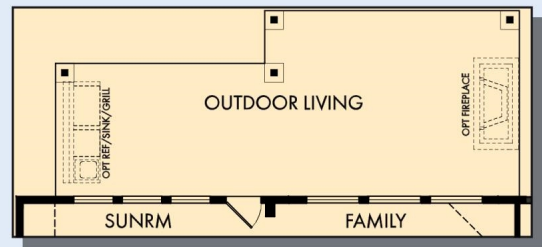
**David Weekley
Homes**

THE FONTANELLE

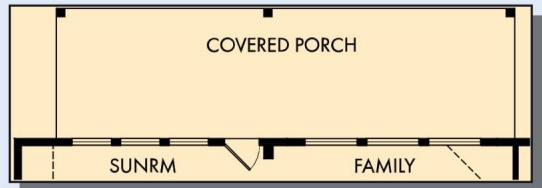
2,675 - 2,738 sq. ft. • 3 Bedrooms • 2 Full Baths • 1 Half Bath • 2 - 3 Car Garage



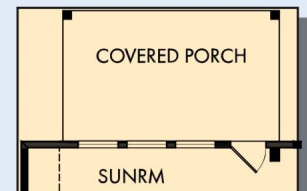
OPTIONAL 3 CAR GARAGE



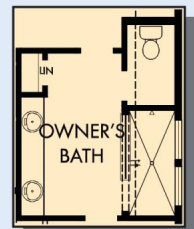
OPTIONAL OUTDOOR LIVING AT SUNROOM AND FAMILY



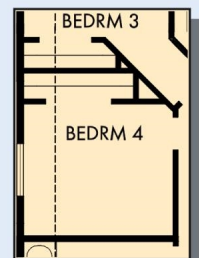
OPTIONAL EXTENDED COVERED PORCH AT SUNROOM AND FAMILY



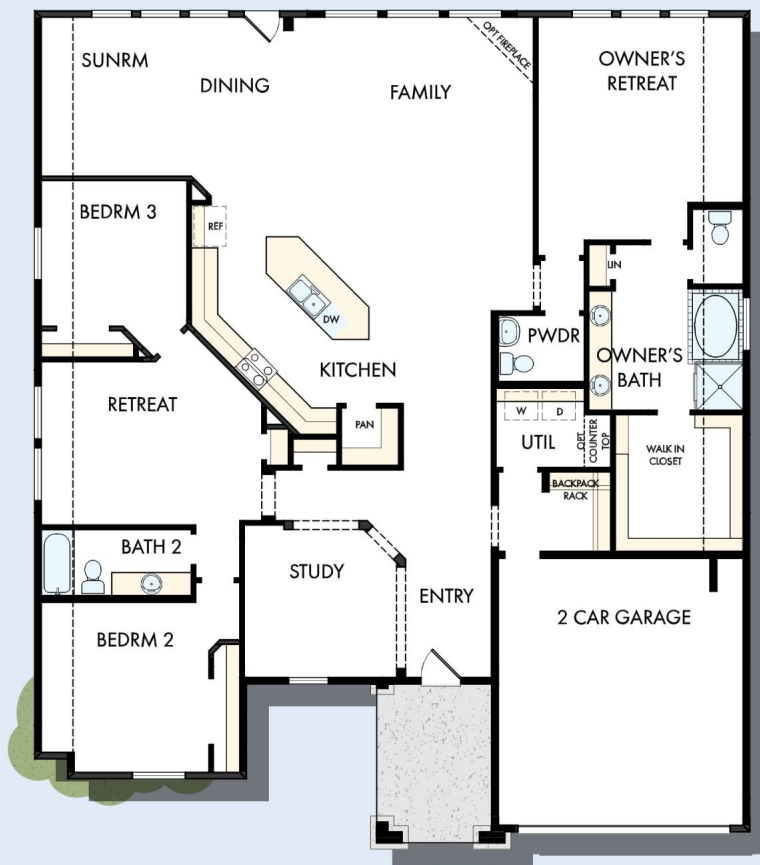
OPTIONAL COVERED PORCH AT DINING



OPTIONAL SUPER SHOWER AT OWNER'S BATH



OPTIONAL BEDROOM 4 AT RETREAT



6776 in 2401 SAN

For additional options, please visit DavidWeekleyHomes.com

6/12/2020



See a David Weekley Homes Sales Consultant for details. Prices, plans, dimensions, features, specifications, materials, and availability of homes or communities are subject to change without notice or obligation. Illustrations are artist's depictions only and may differ from completed improvements. Copyright © 2020 David Weekley Homes - All Rights Reserved. San Antonio, TX

DavidWeekleyHomes.com