

THE FORESTCREST



Exterior A

2,925 - 3,044 sq. ft.

3 - 6 Bedrooms

2 - 5 Full Baths

1 Half Bath

2 Car Garage



Exterior B

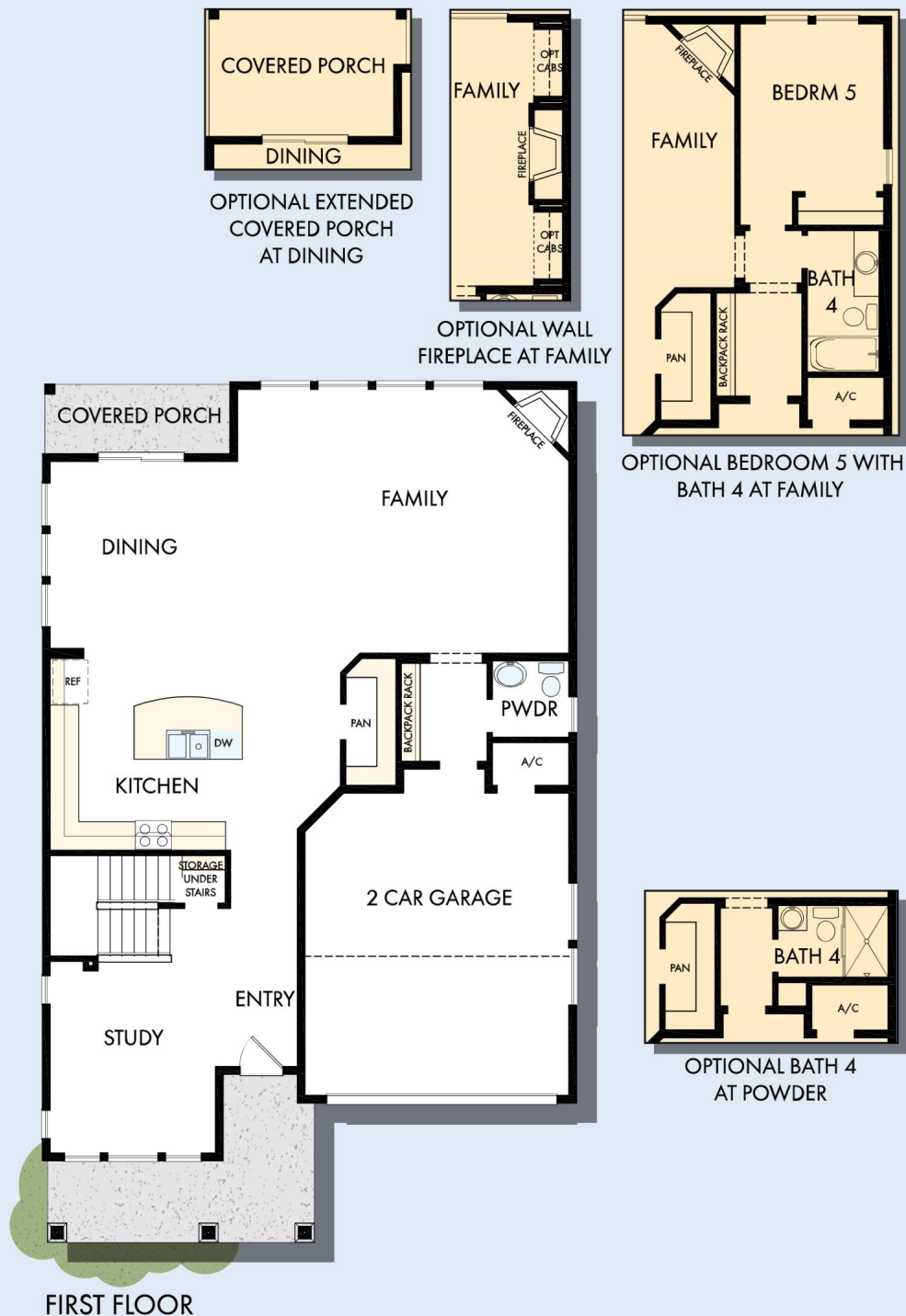


Exterior C

David Weekley
Homes

THE FORESTCREST

2,925 - 3,044 sq. ft. • 3 - 6 Bedrooms • 2 - 5 Full Baths • 1 Half Bath • 2 Car Garage



7779 in 6809 POR

For additional options, please visit DavidWeekleyHomes.com

7/27/2021

DavidWeekleyHomes.com

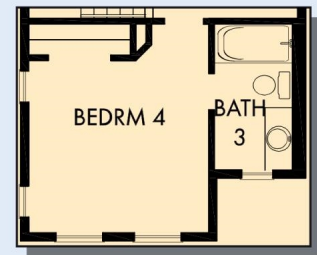
THE FORESTCREST



OPTIONAL SUPER
SHOWER WITH
FULL GLASS
AT OWNER'S BATH



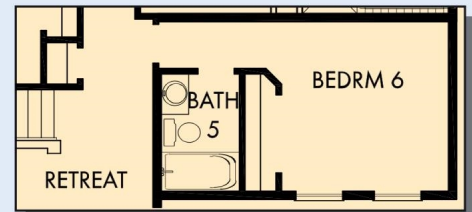
OPTIONAL BEDROOM 4
AT RETREAT



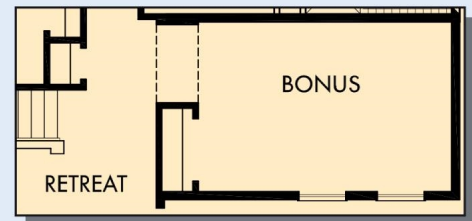
OPTIONAL BEDROOM 4 WITH
BATH 3 AT RETREAT



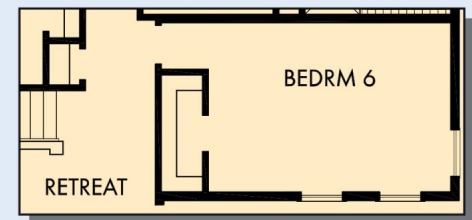
SECOND FLOOR



OPTIONAL BEDROOM 6 WITH BATH 5 AT HALL



BONUS AT HALL



OPTIONAL BEDROOM 6 AT HALL

For additional options, please visit DavidWeekleyHomes.com

DavidWeekleyHomes.com



See a David Weekley Homes Sales Consultant for details.
Prices, plans, dimensions, features, specifications, materials,
and availability of homes or communities are subject to
change without notice or obligation. Illustrations are artist's
depictions only and may differ from completed improvements.
Copyright © 2021 David Weekley Homes - All Rights Reserved.
POR, OR