

THE NESMITH



Exterior A

1,663 sq. ft.

2 - 3 Bedrooms

2 Full Baths

2 Car Garage



Exterior B

Sandra A.



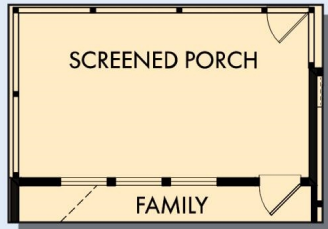
Best Builder Around

We have loved DW homes ever since our mother bought one. The quality of their work, attention to detail and willingness to respond to questions is top notch. The biggest thing we love about DW is their focus on customer service. They are not your typical builder who meets with you to get a check and forgets about you till walk thru. They are your partner through the entire process. Each step of the way they know they are building your dream house and really treat you like family. I would recommend them hands down. My husband sells real estate and has dealt with numerous builders around town. He always directs his clients to DW and signs their praises.

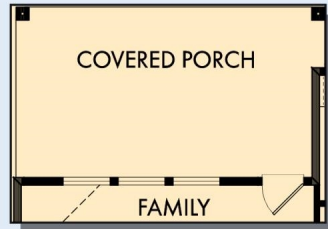
Encore
by David Weekley Homes

THE NESMITH

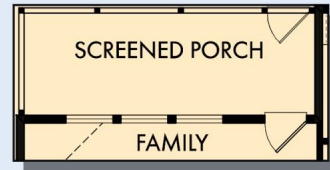
1,663 sq. ft. • 2 - 3 Bedrooms • 2 Full Baths • 2 Car Garage



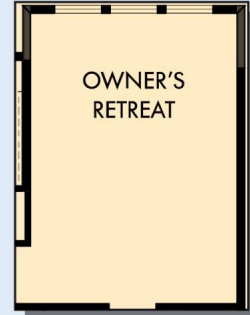
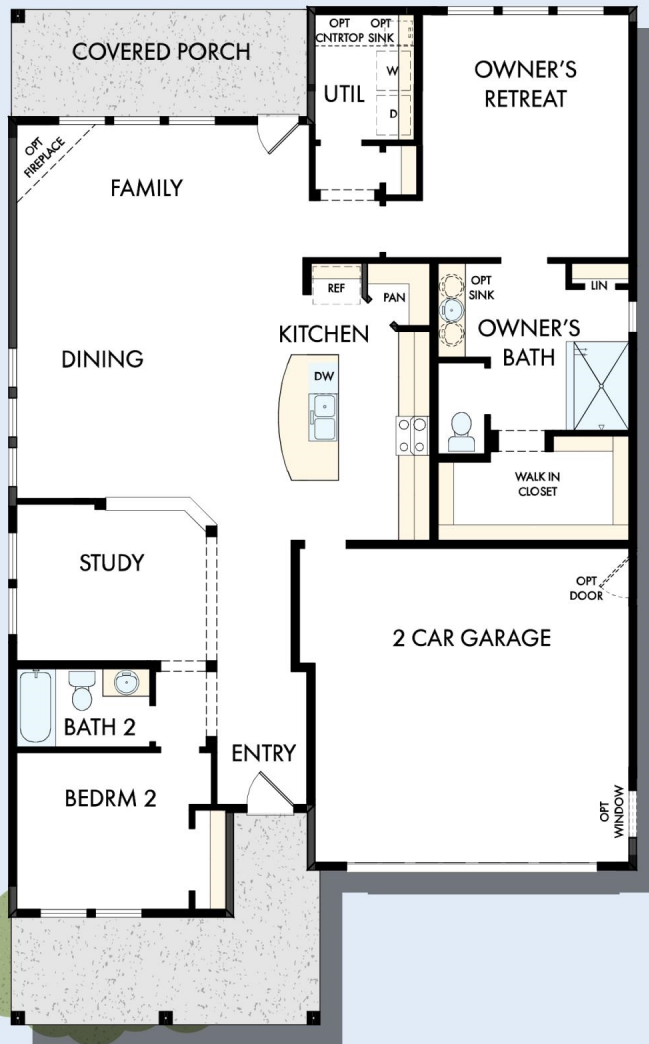
OPTIONAL EXTENDED SCREENED PORCH AT FAMILY



OPTIONAL EXTENDED COVERED PORCH AT FAMILY



OPTIONAL SCREENED PORCH AT FAMILY



OPTIONAL EXTENDED OWNER'S RETREAT



OPTIONAL DROP IN TUB WITH SEPARATE SHOWER AT OWNER'S BATH



OPTIONAL BEDROOM 3 AT STUDY

B295 in 4553 CSC

For additional options, please visit DavidWeekleyHomes.com

10/9/2023



See a David Weekley Homes Sales Consultant for details. Prices, plans, dimensions, features, specifications, materials, and availability of homes or communities are subject to change without notice or obligation. Illustrations are artist's depictions only and may differ from completed improvements. Copyright © 2023 David Weekley Homes - All Rights Reserved. Charleston, SC

Encore
by David Weekley Homes