

# THE LINDENBERRY

1,569 sq. ft.

---

3 Bedrooms

---

2 Full Baths

---

1 Half Bath

---

2 Car Garage

**David Weekley  
Homes**

**Meg S.**



**Truly treated us like family!!!**

We enjoyed every part of the home building process. It was amazing! Our builder was always keeping us informed and really went above and beyond to ensure that we love our home. Our warranty rep is outstanding and continues to take care of our every need. I couldn't have asked for a better experience. Our builder and warranty rep continue to be there for us as a family. While our interactions with the DW Family have been highly professional, we are also lucky enough to be able to call them some of our greatest friends! Wouldn't change a thing!

**Chelsea**

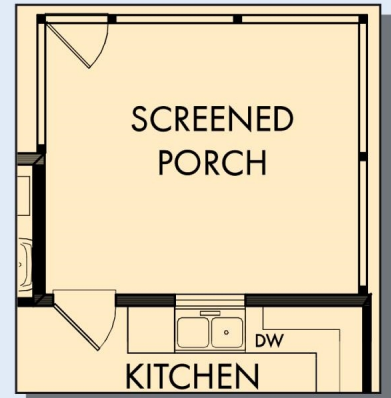
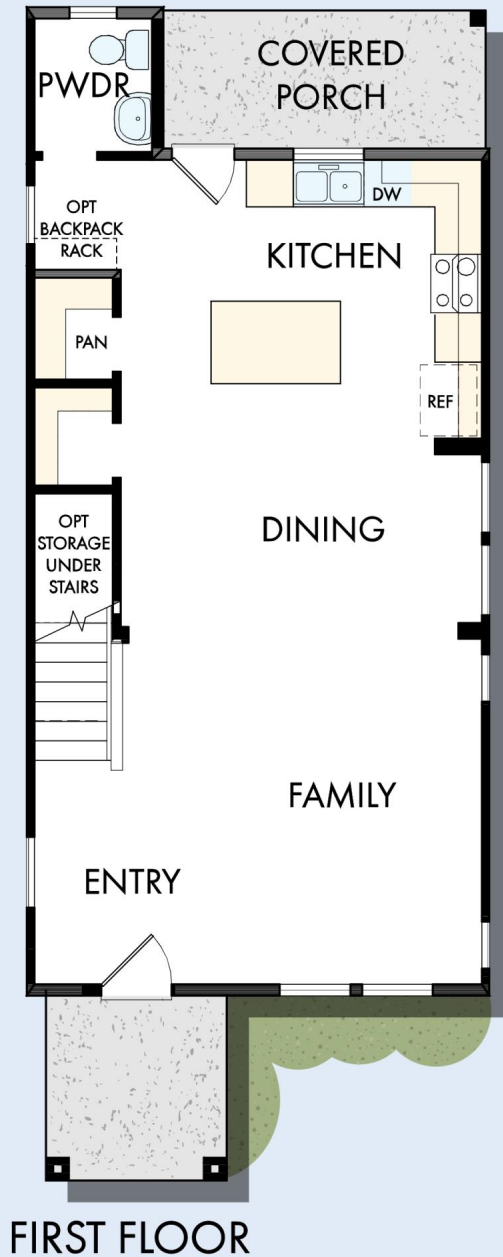


**Incredible Experience, Incredible Home!**

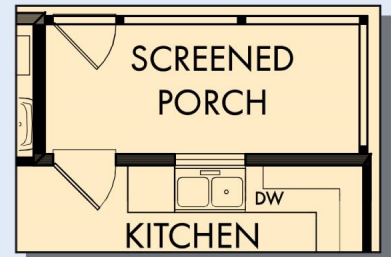
We trusted the team from Day 1 and couldn't have asked for a better experience. The attention to detail was fantastic, and we felt as if the DWH team had a personal interest in the success of our home. The process was well defined and every team member set very clear expectations. We love every inch of our home, and we'd definitely recommend DWH!

# THE LINDENBERRY

1,569 sq. ft. • 3 Bedrooms • 2 Full Baths • 1 Half Bath • 2 Car Garage



OPTIONAL EXTENDED SCREENED PORCH



OPTIONAL SCREENED PORCH



OPTIONAL WALL FIREPLACE AT FAMILY

# THE LINDENBERRY



SECOND FLOOR



OPTIONAL SUPER SHOWER  
AT OWNER'S BATH

For additional options, please visit [DavidWeekleyHomes.com](http://DavidWeekleyHomes.com)

See a David Weekley Homes Sales Consultant for details. Prices, plans, dimensions, features, specifications, materials, and availability of homes or communities are subject to change without notice or obligation. Illustrations are artist's depictions only and may differ from completed improvements. Copyright © 2023 David Weekley Homes - All Rights Reserved. Charleston, SC

**DavidWeekleyHomes.com**

