

THE BEEKMAN

sq. ft.

Bedrooms

Full Baths

Half Baths

Car Garage

**David Weekley
Homes**

Jordan



Greatly exceeded every expectation! A+++!

The entire experience was excellent from the first day I showed up to look at houses. The whole team came together to provide a truly quality house that I will be living in for years to come. Kajal helped me purchase the house and coordinated all meetings. She was very cheerful and professional at all times and I could tell that she cared about her clients and my family. Jeff and Robbie were builders that always went the extra mile to ensure total customer satisfaction. Jeff was very helpful and I am grateful to his management and know that I will be moving in to a house that is built right with a great attention to detail... Ashley also provided Kajal with assistance whenever Kajal was not available. I could not be happier with everyone involved in building this house. David Weekley is a great company and I would enthusiastically recommend them to others needing a quality house built in the future. Thank you for such a great experience and I hope that this company continues to grow.

Gigi and Papa

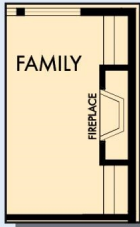


THE BESTest - Better than all the rest!

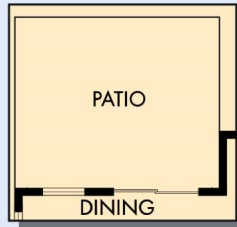
What an awesome and personal family-oriented company! From touring model homes to selecting "THE ONE" just for us, the experience was delightful and amazing! The entire David Weekley team has been exceptionally wonderful and always available to address any issues we encountered. We have been amazed and impressed by the "Service after the Sale" approach by the David Weekley staff. We would recommend David Weekley homes to anyone. We feel like we are an important member of the Weekley family!

THE BEEKMAN

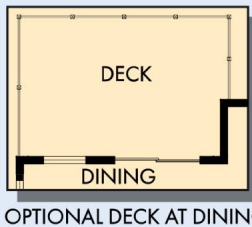
sq. ft. • Bedrooms • Full Baths • Half Baths • Car Garage



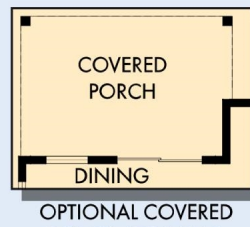
OPTIONAL WALL FIREPLACE WITH BUILT IN CABINETS AT FAMILY



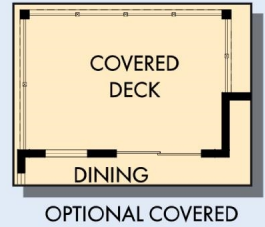
OPTIONAL EXTENDED PATIO AT DINING



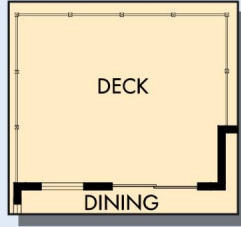
OPTIONAL DECK AT DINING



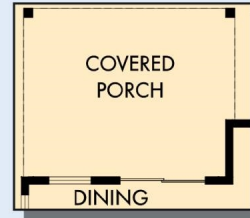
OPTIONAL COVERED PORCH AT DINING



OPTIONAL COVERED DECK AT DINING



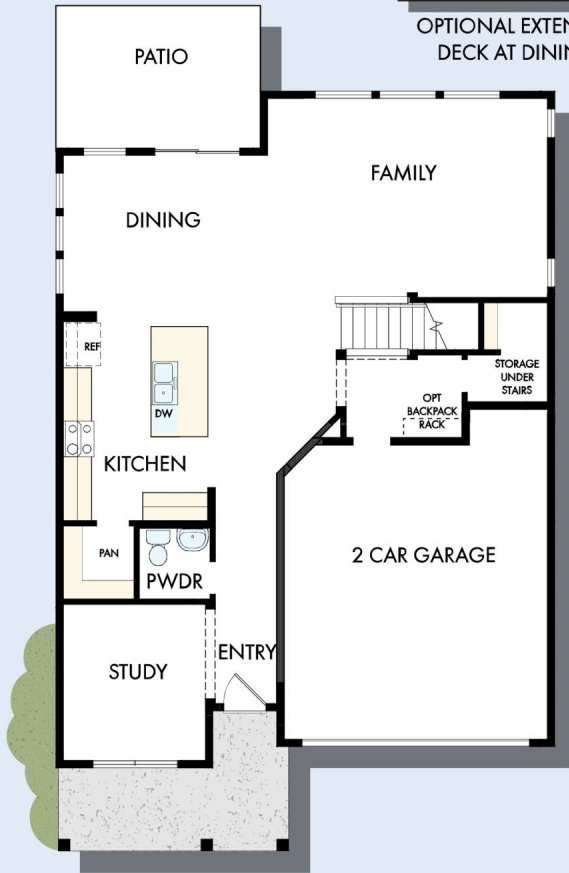
OPTIONAL EXTENDED DECK AT DINING



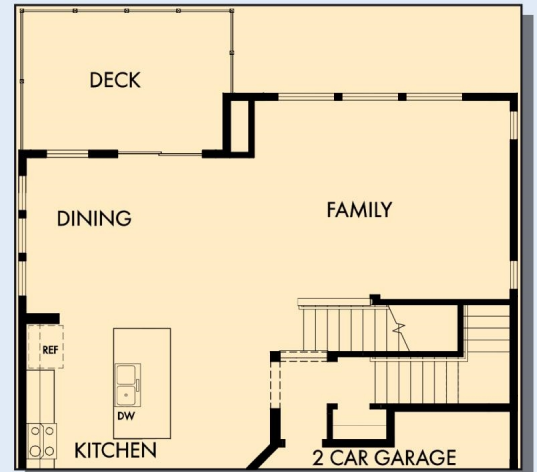
OPTIONAL EXTENDED COVERED PORCH AT DINING



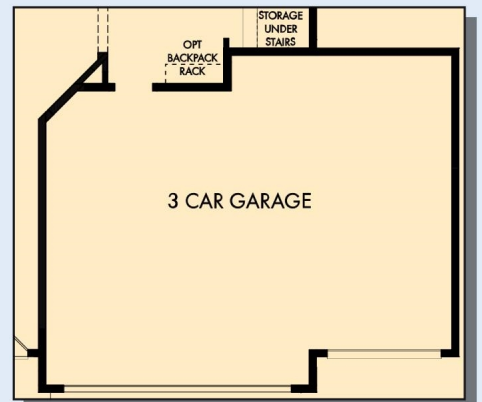
OPTIONAL EXTENDED COVERED DECK AT DINING



FIRST FLOOR

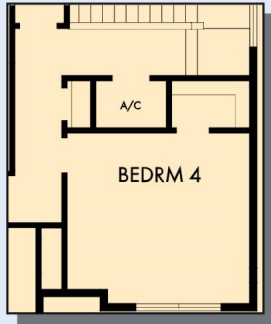


FIRST FLOOR WITH OPTIONAL BASEMENT



OPTIONAL 3 CAR GARAGE

THE BEEKMAN



OPTIONAL BEDROOM 4
AT RETREAT



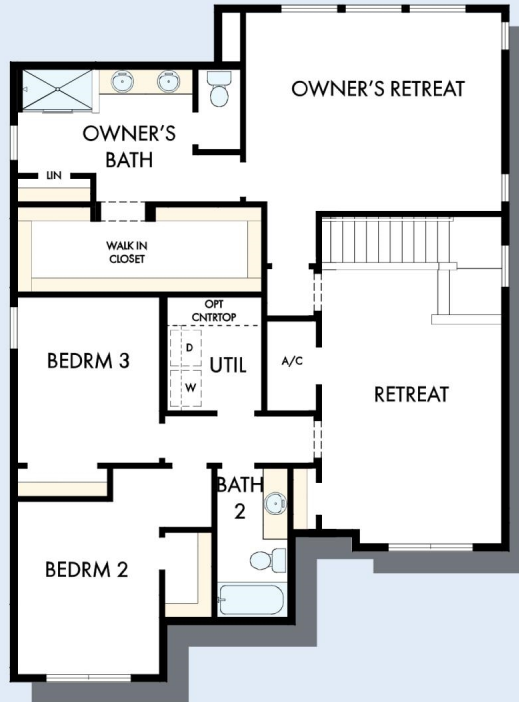
OPTIONAL DROP-IN
TUB WITH SEPARATE
SHOWER AT
OWNER'S BATH



OPTIONAL FREE
STANDING TUB WITH
SEPARATE SHOWER AT
OWNER'S BATH



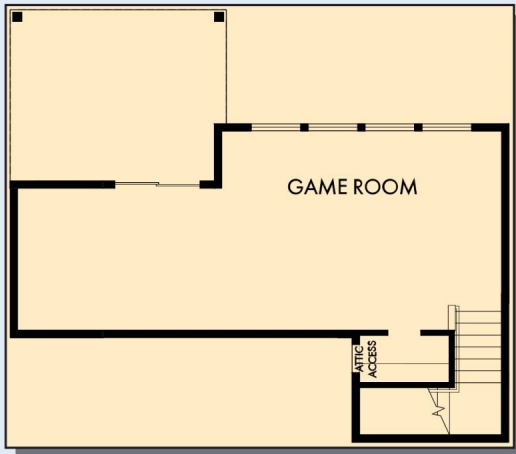
OPTIONAL SUPER
SHOWER AT
OWNER'S BATH



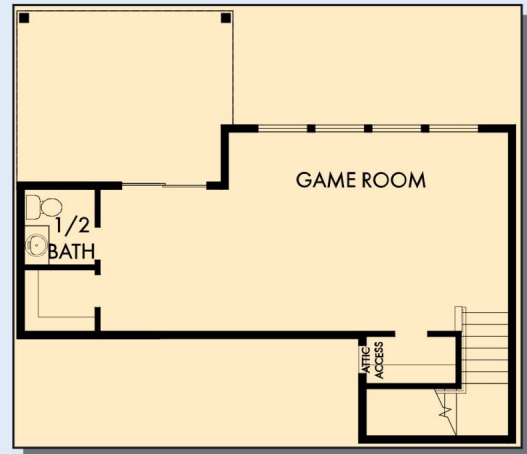
SECOND FLOOR

For additional options, please visit DavidWeekleyHomes.com

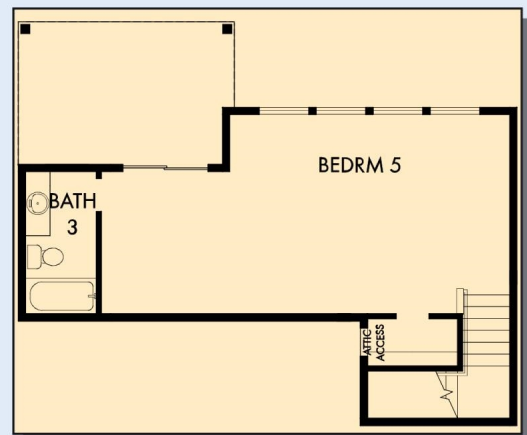
THE BEEKMAN



OPTIONAL BASEMENT WITH GAME ROOM



OPTIONAL BASEMENT WITH GAME ROOM AND HALF BATH



OPTIONAL BASEMENT WITH BEDROOM 5 AND BATH 3

For additional options, please visit DavidWeekleyHomes.com

See a David Weekley Homes Sales Consultant for details. Prices, plans, dimensions, features, specifications, materials, and availability of homes or communities are subject to change without notice or obligation. Illustrations are artist's depictions only and may differ from completed improvements. Copyright © 2024 David Weekley Homes - All Rights Reserved. POR, OR

DavidWeekleyHomes.com

