

THE BARKELEY



6444 SLC - A

Exterior A



6444 SLC - B

Exterior B

1,609 - 2,995 sq. ft.

3 - 4 Bedrooms

2 - 3 Full Baths

1 Half Bath

2 Car Garage

Chelsea



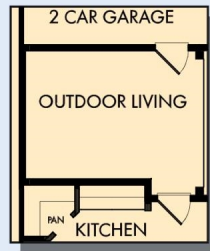
Incredible Experience, Incredible Home!

We trusted the team from Day 1 and couldn't have asked for a better experience. The attention to detail was fantastic, and we felt as if the DWH team had a personal interest in the success of our home. The process was well defined and every team member set very clear expectations. We love every inch of our home, and we'd definitely recommend DWH!

**David Weekley
Homes**

THE BARKELEY

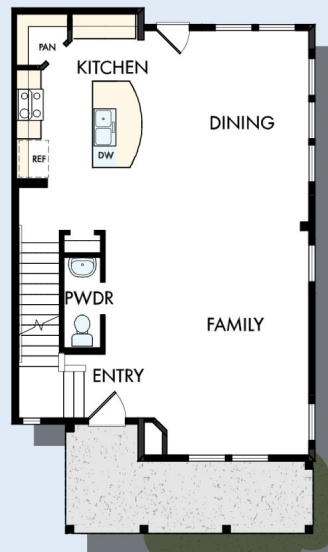
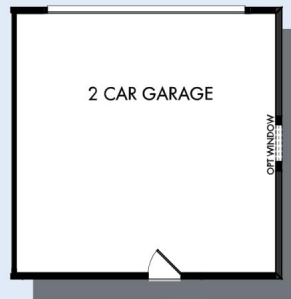
1,609 - 2,995 sq. ft. • 3 - 4 Bedrooms • 2 - 3 Full Baths • 1 Half Bath • 2 Car Garage



OPTIONAL OUTDOOR LIVING
AT KITCHEN AND GARAGE



OPTIONAL MUDROOM
AT KITCHEN AND GARAGE



FIRST FLOOR

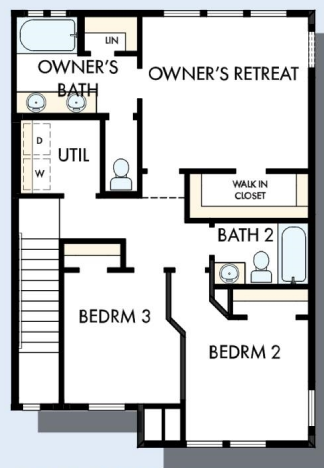
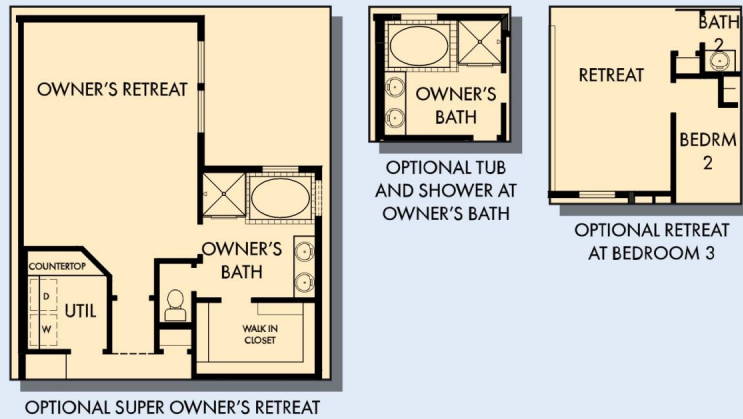
6444 in 5315 SLC

For additional options, please visit DavidWeekleyHomes.com

3/27/2020

DavidWeekleyHomes.com

THE BARKELEY

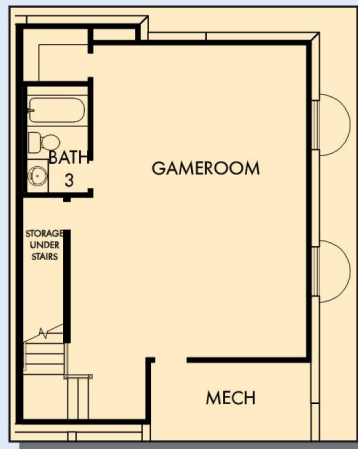


SECOND FLOOR

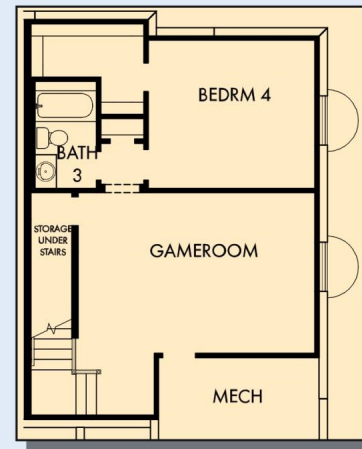
For additional options, please visit DavidWeekleyHomes.com

DavidWeekleyHomes.com

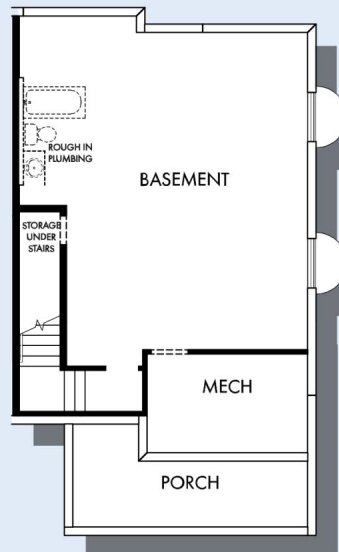
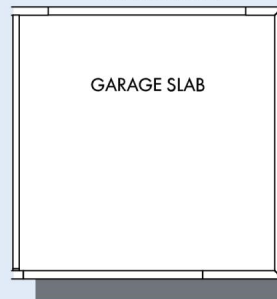
THE BARKELEY



OPTIONAL GAMEROOM WITH BATH 3
AT BASEMENT



OPTIONAL GAMEROOM WITH BEDROOM 4
AND BATH 3 AT BASEMENT



BASEMENT

For additional options, please visit DavidWeekleyHomes.com

See a David Weekley Homes Sales Consultant for details. Prices, plans, dimensions, features, specifications, materials, and availability of homes or communities are subject to change without notice or obligation. Illustrations are artist's depictions only and may differ from completed improvements. Copyright © 2020 David Weekley Homes - All Rights Reserved. Salt Lake City, UT

DavidWeekleyHomes.com

