

THE HARPER VALLEY



Exterior A



Exterior B

2,482 - 2,635 sq. ft.

3 Bedrooms

3 Full Baths

1 - 2 Half Baths

2 Car Garage

Gigi and Papa



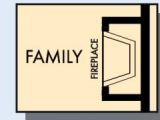
THE BESTest - Better than all the rest!

What an awesome and personal family-oriented company! From touring model homes to selecting "THE ONE" just for us, the experience was delightful and amazing! The entire David Weekley team has been exceptionally wonderful and always available to address any issues we encountered. We have been amazed and impressed by the "Service after the Sale" approach by the David Weekley staff. We would recommend David Weekley homes to anyone. We feel like we are an important member of the Weekley family!

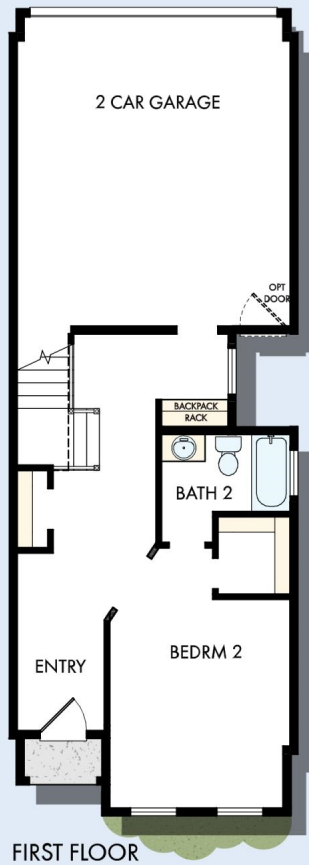
CENTRAL LIVING
by David Weekley Homes

THE HARPER VALLEY

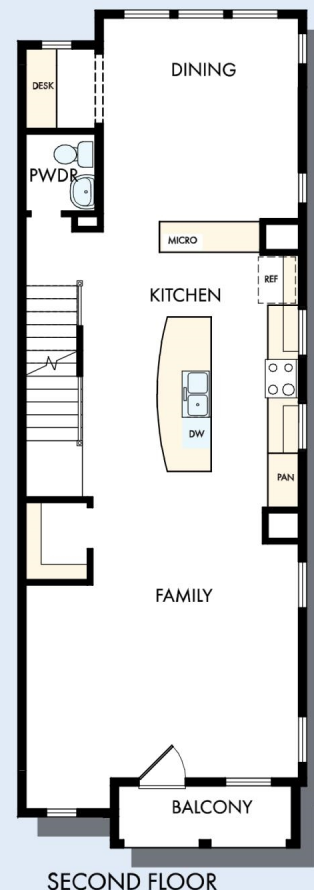
2,482 - 2,635 sq. ft. • 3 Bedrooms • 3 Full Baths • 1 - 2 Half Baths • 2 Car Garage



OPTIONAL FIREPLACE
AT FAMILY

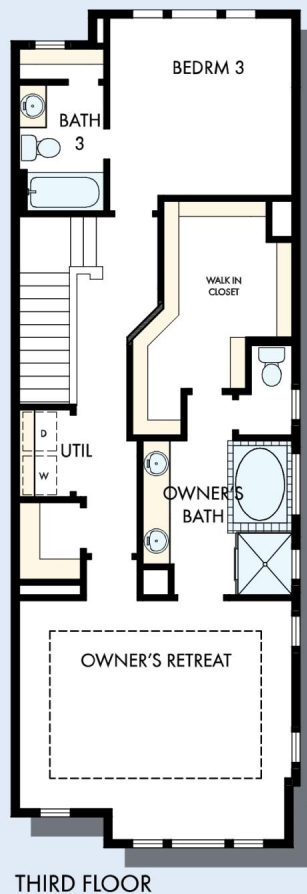
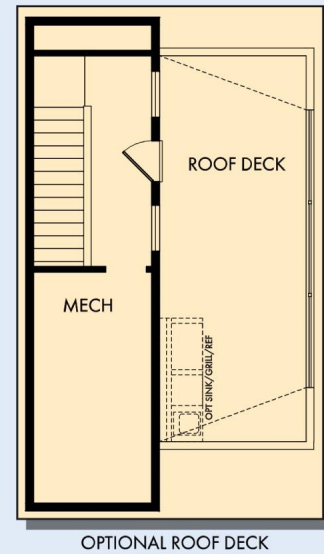
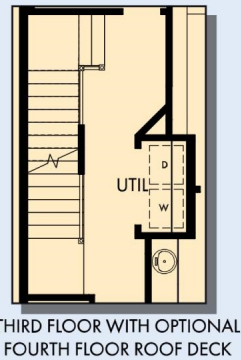


FIRST FLOOR



SECOND FLOOR

THE HARPER VALLEY



For additional options, please visit DavidWeekleyHomes.com



See a David Weekley Homes Sales Consultant for details. Prices, plans, dimensions, features, specifications, materials, and availability of homes or communities are subject to change without notice or obligation. Illustrations are artist's depictions only and may differ from completed improvements. Copyright © 2019 David Weekley Homes - All Rights Reserved. Dallas/Ft. Worth, TX

CENTRAL LIVING
by David Weekley Homes