

THE LOCKIN



Exterior A

3,305 - 3,308 sq. ft.

4 Bedrooms

3 Full Baths

1 - 2 Half Baths

4 Car Garage



Exterior B

Meg S.



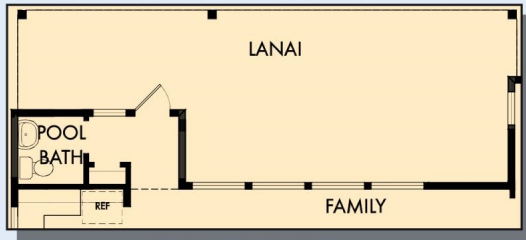
Truly treated us like family!!!

We enjoyed every part of the home building process. It was amazing! Our builder was always keeping us informed and really went above and beyond to ensure that we love our home. Our warranty rep is outstanding and continues to take care of our every need. I couldn't have asked for a better experience. Our builder and warranty rep continue to be there for us as a family. While our interactions with the DW Family have been highly professional, we are also lucky enough to be able to call them some of our greatest friends! Wouldn't change a thing!

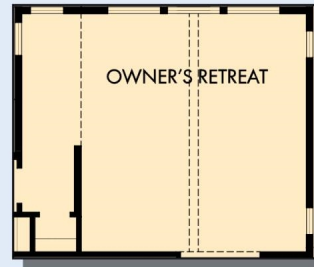
**David Weekley
Homes**

THE LOCKIN

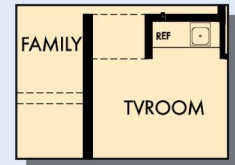
3,305 - 3,308 sq. ft. • 4 Bedrooms • 3 Full Baths • 1 - 2 Half Baths • 4 Car Garage



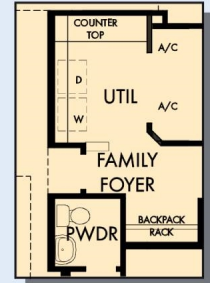
OPTIONAL EXTENDED LANAI



OPTIONAL EXTENDED OWNER'S RETREAT



OPTIONAL WETBAR AT TVROOM



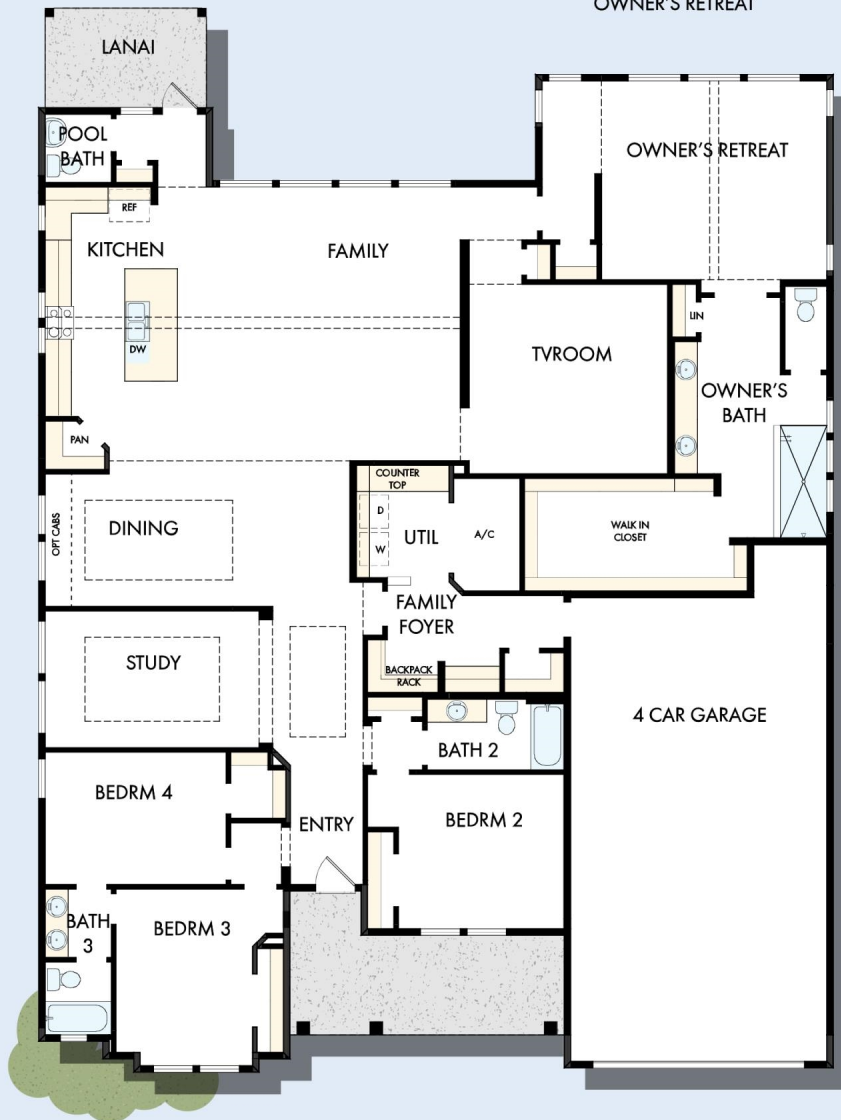
OPTIONAL POWDER BATH AT HALL CLOSET



OPTIONAL FREE STANDING TUB WITH SEPARATE SHOWER AT OWNER'S BATH



OPTIONAL DROP-IN TUB WITH SEPARATE SHOWER AT OWNER'S BATH



B616 in 4915 JAC

For additional options, please visit DavidWeekleyHomes.com

2/29/2024

See a David Weekley Homes Sales Consultant for details. Prices, plans, dimensions, features, specifications, materials, and availability of homes or communities are subject to change without notice or obligation. Illustrations are artist's depictions only and may differ from completed improvements. Copyright © 2024 David Weekley Homes - All Rights Reserved. Jacksonville, FL

DavidWeekleyHomes.com

