

# THE WOODLEAF



Exterior E

2,022 - 2,043 sq. ft.

3 - 5 Bedrooms

2 - 3 Full Baths

0 - 1 Half Baths

2 Car Garage



Exterior F

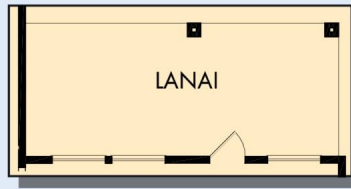


Exterior G

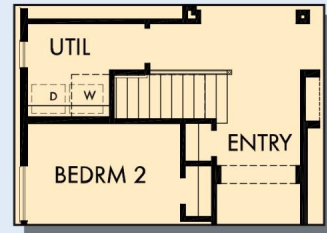
David Weekley  
Homes

# THE WOODLEAF

2,022 - 2,043 sq. ft. • 3 - 5 Bedrooms • 2 - 3 Full Baths • 0 - 1 Half Baths • 2 Car Garage



OPTIONAL EXTENDED LANAI  
AT DINING AND FAMILY



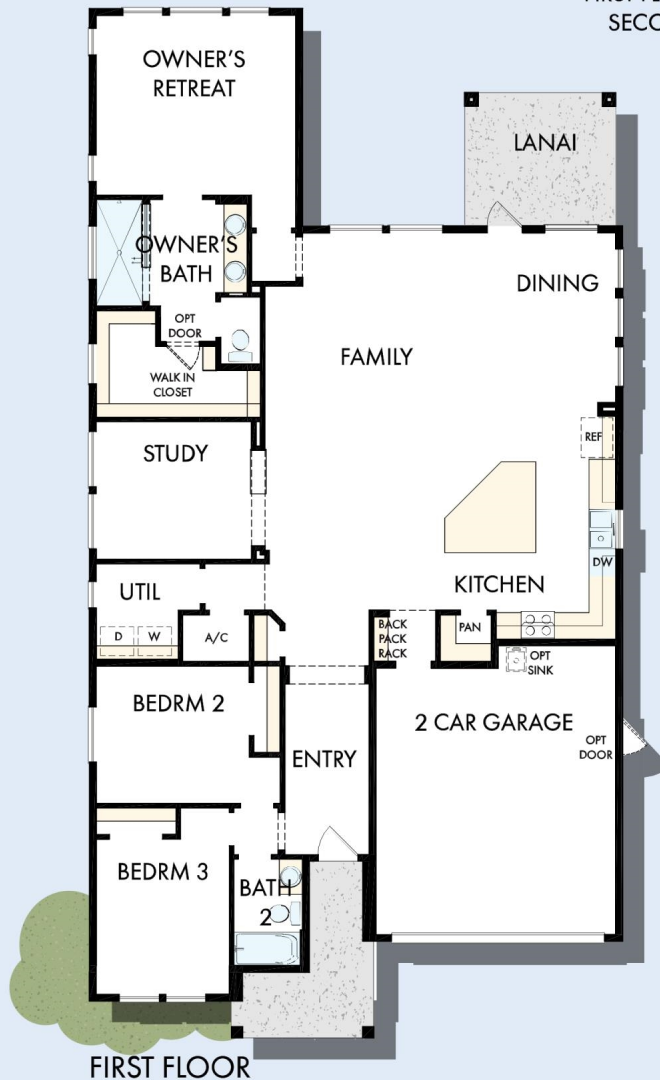
FIRST FLOOR WITH OPTIONAL  
SECOND FLOOR BONUS



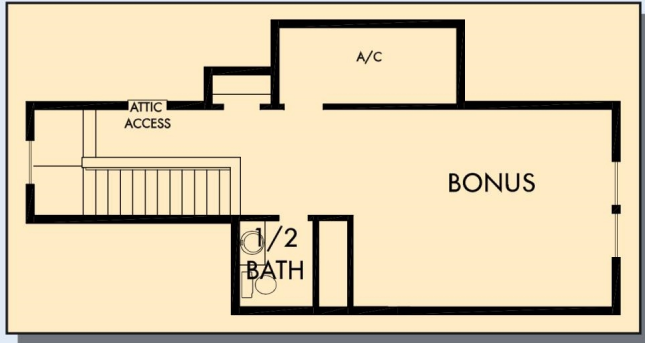
OPTIONAL BEDROOM  
4 AT STUDY



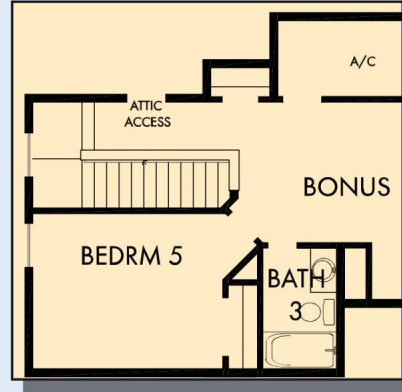
OPTIONAL SLIP IN TUB  
WITH SEPARATE  
SHOWER AT  
OWNER'S BATH



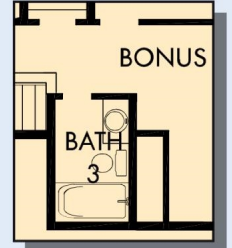
# THE WOODLEAF



OPTIONAL BONUS WITH HALF BATH



OPTIONAL BEDROOM 5 WITH  
BATH 3 AT BONUS



OPTIONAL BATH 3  
AT BONUS

For additional options, please visit [DavidWeekleyHomes.com](http://DavidWeekleyHomes.com)



See a David Weekley Homes Sales Consultant for details. Prices, plans, dimensions, features, specifications, materials, and availability of homes or communities are subject to change without notice or obligation. Illustrations are artist's depictions only and may differ from completed improvements. Copyright © 2020 David Weekley Homes - All Rights Reserved. Jacksonville, FL

## DavidWeekleyHomes.com