

THE MARITIME



Exterior A

2,350 - 2,380 sq. ft.

3 - 5 Bedrooms

2 - 4 Full Baths

1 Half Bath

2 Car Garage



Exterior B

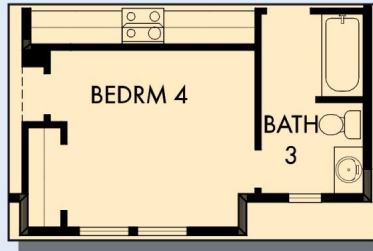


Exterior C

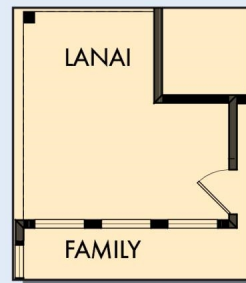
David Weekley
Homes

THE MARITIME

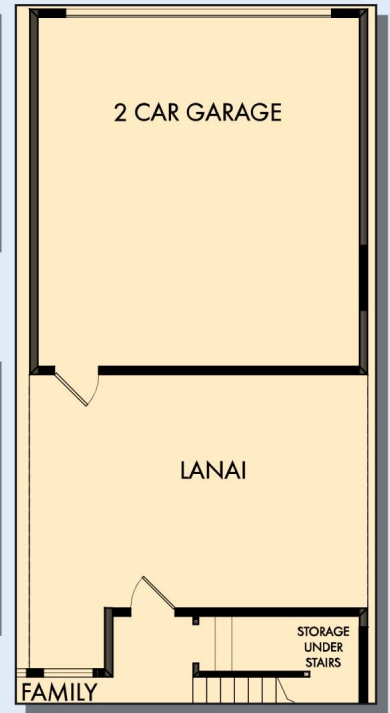
2,350 - 2,380 sq. ft. • 3 - 5 Bedrooms • 2 - 4 Full Baths • 1 Half Bath • 2 Car Garage



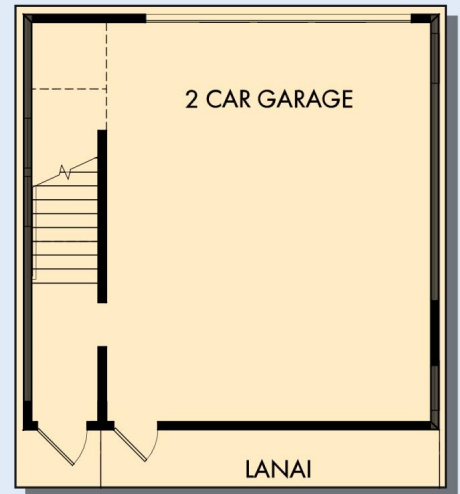
OPTIONAL BEDROOM 4 WITH BATH 3 AT STUDY



OPTIONAL EXTENDED LANAI

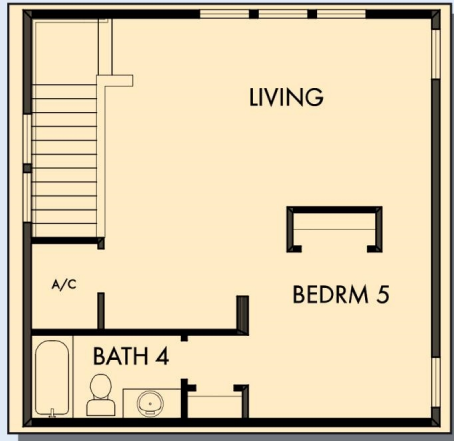


OPTIONAL DETACHED 2 CAR GARAGE



FIRST FLOOR WITH OPTIONAL RETREAT ABOVE GARAGE

THE MARITIME



OPTIONAL RETREAT ABOVE GARAGE



OPTIONAL RETREAT WITH WET BAR ABOVE GARAGE



SECOND FLOOR



OPTIONAL SLIDE-IN TUB WITH SEPARATE SHOWER AT OWNER'S BATH



OPTIONAL FREE STANDING TUB WITH SEPARATE SHOWER AT OWNER'S BATH

For additional options, please visit DavidWeekleyHomes.com

See a David Weekley Homes Sales Consultant for details. Prices, plans, dimensions, features, specifications, materials, and availability of homes or communities are subject to change without notice or obligation. Illustrations are artist's depictions only and may differ from completed improvements. Copyright © 2023 David Weekley Homes - All Rights Reserved. Jacksonville, FL

DavidWeekleyHomes.com

