

# THE SILVERMAN



Exterior A



Exterior B

2,687 - 2,831 sq. ft.

4 - 5 Bedrooms

3 Full Baths

1 Half Bath

2 Car Garage

**Rich C.**



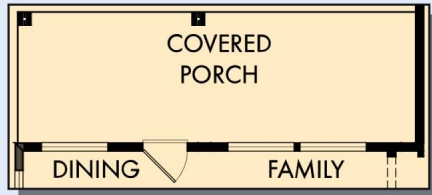
### **Wonderful Experience!**

If there is anything that sets David Weekley apart from other builders it is their customer service. I felt like a member of the family from the first time I walked into the model, to when I received my keys and saw the wonderful housewarming presents that were left for me, up to the present when I see my salesman in the neighborhood. I felt like they really took the time to understand what I was looking for and then came through with my dream home. I would highly recommend David Weekley to anyone looking to buy and/or build a home.

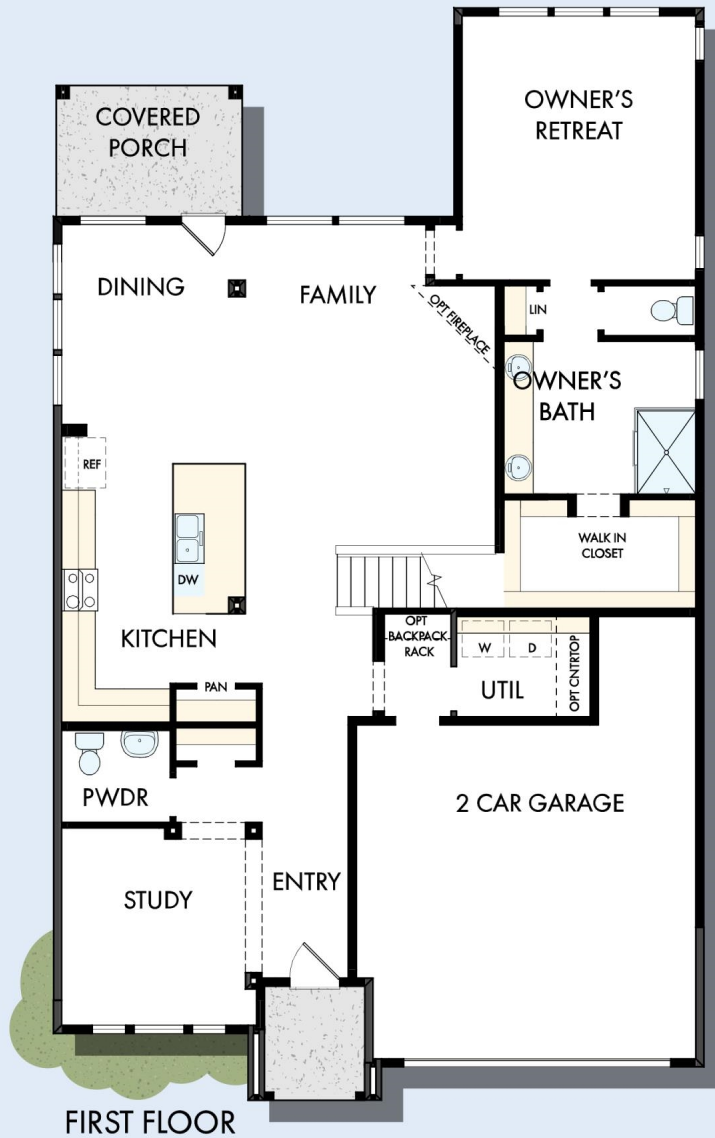
**David Weekley  
Homes**

# THE SILVERMAN

2,687 - 2,831 sq. ft. • 4 - 5 Bedrooms • 3 Full Baths • 1 Half Bath • 2 Car Garage



OPTIONAL EXTENDED COVERED PORCH  
AT DINING AND FAMILY



OPTIONAL SUPER SHOWER  
AT OWNER'S BATH

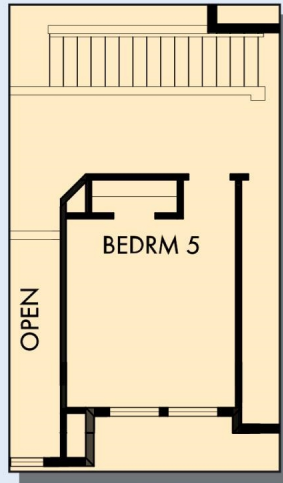


OPTIONAL DROP-IN TUB  
WITH SEPARATE SHOWER  
AT OWNER'S BATH



OPTIONAL SLIDE-IN TUB  
WITH SEPARATE SHOWER  
AT OWNER'S BATH

# THE SILVERMAN



OPTIONAL BEDROOM 5  
AT RETREAT



SECOND FLOOR

For additional options, please visit [DavidWeekleyHomes.com](http://DavidWeekleyHomes.com)

See a David Weekley Homes Sales Consultant for details. Prices, plans, dimensions, features, specifications, materials, and availability of homes or communities are subject to change without notice or obligation. Illustrations are artist's depictions only and may differ from completed improvements. Copyright © 2024 David Weekley Homes - All Rights Reserved. Dallas/Ft. Worth, TX

**DavidWeekleyHomes.com**



EQUAL HOUSING OPPORTUNITY