

THE GLENMEADE



Exterior B

3,205 - 3,976 sq. ft.

4 - 6 Bedrooms

3 - 5 Full Baths

1 - 2 Half Baths

3 Car Garage



Exterior F

Meg S.



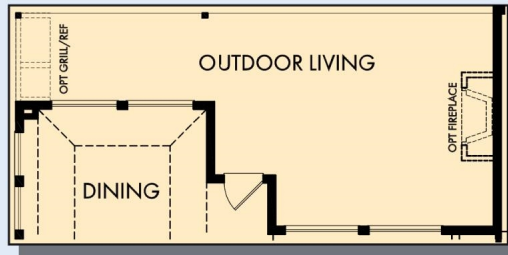
Truly treated us like family!!!

We enjoyed every part of the home building process. It was amazing! Our builder was always keeping us informed and really went above and beyond to ensure that we love our home. Our warranty rep is outstanding and continues to take care of our every need. I couldn't have asked for a better experience. Our builder and warranty rep continue to be there for us as a family. While our interactions with the DW Family have been highly professional, we are also lucky enough to be able to call them some of our greatest friends! Wouldn't change a thing!

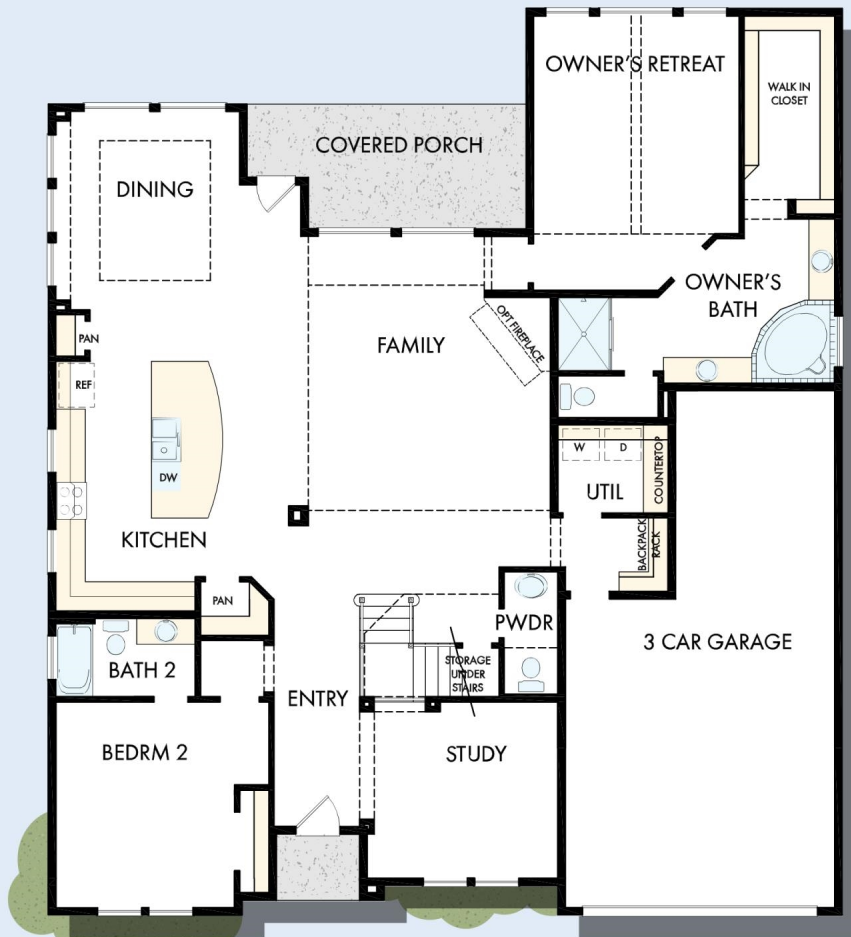
**David Weekley
Homes**

THE GLENMEADE

3,205 - 3,976 sq. ft. • 4 - 6 Bedrooms • 3 - 5 Full Baths • 1 - 2 Half Baths • 3 Car Garage

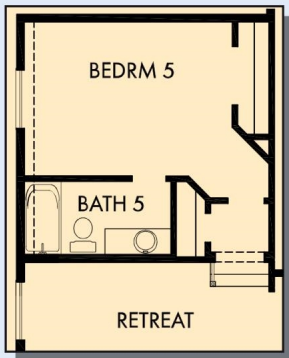


OPTIONAL OUTDOOR LIVING AT DINING AND FAMILY

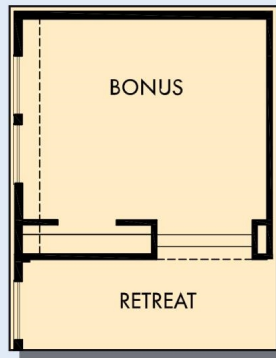


FIRST FLOOR

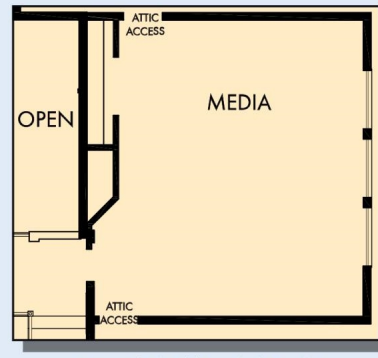
THE GLENMEADE



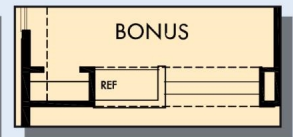
OPTIONAL BEDROOM 5 WITH
BATH 4 AT RETREAT



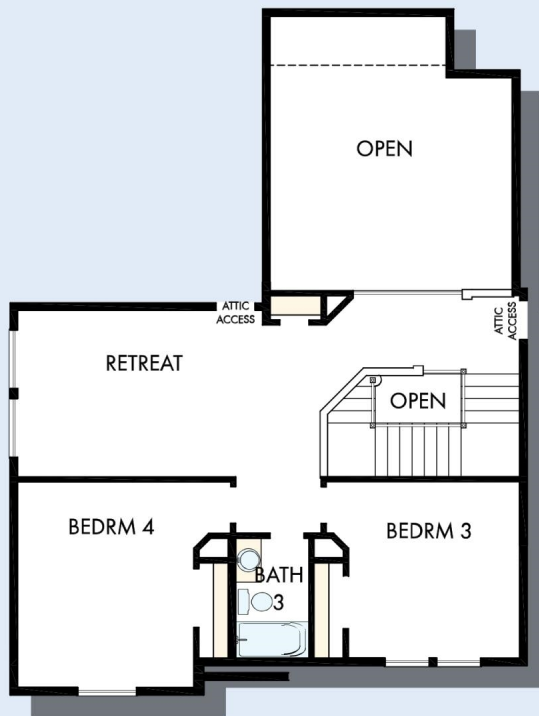
OPTIONAL BONUS AT RETREAT



OPTIONAL MEDIA AT STAIRS



OPTIONAL BAR AT BONUS



SECOND FLOOR

For additional options, please visit DavidWeekleyHomes.com

See a David Weekley Homes Sales Consultant for details. Prices, plans, dimensions, features, specifications, materials, and availability of homes or communities are subject to change without notice or obligation. Illustrations are artist's depictions only and may differ from completed improvements. Copyright © 2021 David Weekley Homes - All Rights Reserved. Houston, TX

DavidWeekleyHomes.com

