

THE YATES



Exterior B

3,029 sq. ft.

4 - 5 Bedrooms

3 Full Baths

1 Half Bath

3 Car Garage



Exterior C

Gigi and Papa



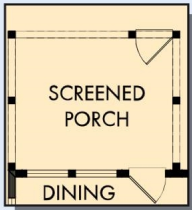
THE BESTest - Better than all the rest!

What an awesome and personal family-oriented company! From touring model homes to selecting "THE ONE" just for us, the experience was delightful and amazing! The entire David Weekley team has been exceptionally wonderful and always available to address any issues we encountered. We have been amazed and impressed by the "Service after the Sale" approach by the David Weekley staff. We would recommend David Weekley homes to anyone. We feel like we are an important member of the Weekley family!

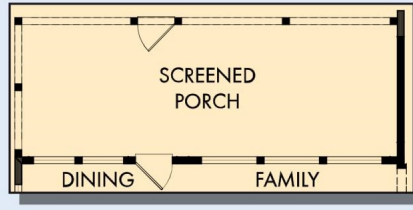
**David Weekley
Homes**

THE YATES

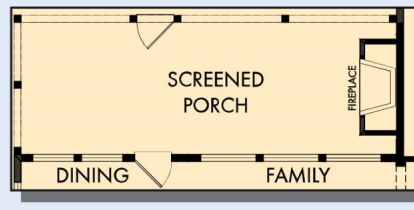
3,029 sq. ft. • 4 - 5 Bedrooms • 3 Full Baths • 1 Half Bath • 3 Car Garage



OPTIONAL SCREENED PORCH AT DINING



OPTIONAL EXTENDED SCREENED PORCH AT DINING AND FAMILY



OPTIONAL OUTDOOR FIREPLACE AT EXTENDED SCREENED PORCH



OPTIONAL SUPER SHOWER AT OWNER'S BATH



OPTIONAL DROP-IN TUB WITH SEPARATE SHOWER AT OWNER'S BATH



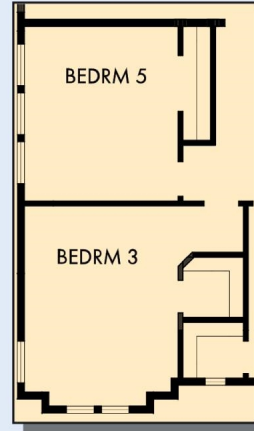
OPTIONAL FREE STANDING TUB WITH SEPARATE SHOWER AT OWNER'S BATH



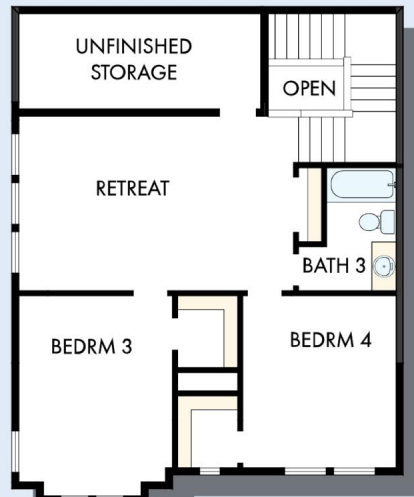
THE YATES



OPTIONAL FINISHED STORAGE



OPTIONAL BEDROOM 5
AT RETREAT



SECOND FLOOR

For additional options, please visit DavidWeekleyHomes.com

See a David Weekley Homes Sales Consultant for details. Prices, plans, dimensions, features, specifications, materials, and availability of homes or communities are subject to change without notice or obligation. Illustrations are artist's depictions only and may differ from completed improvements. Copyright © 2024 David Weekley Homes - All Rights Reserved. Charleston, SC

DavidWeekleyHomes.com

