

THE WHEATLEY



Exterior B

2,426 sq. ft.

3 - 5 Bedrooms

2 - 3 Full Baths

1 Half Bath

2 - 3 Car Garage



Exterior C

Gigi and Papa



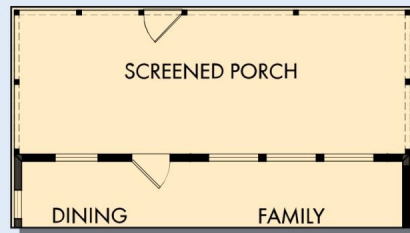
THE BESTest - Better than all the rest!

What an awesome and personal family-oriented company! From touring model homes to selecting "THE ONE" just for us, the experience was delightful and amazing! The entire David Weekley team has been exceptionally wonderful and always available to address any issues we encountered. We have been amazed and impressed by the "Service after the Sale" approach by the David Weekley staff. We would recommend David Weekley homes to anyone. We feel like we are an important member of the Weekley family!

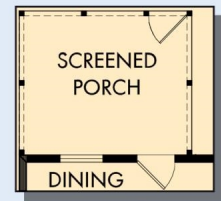
**David Weekley
Homes**

THE WHEATLEY

2,426 sq. ft. • 3 - 5 Bedrooms • 2 - 3 Full Baths • 1 Half Bath • 2 - 3 Car Garage



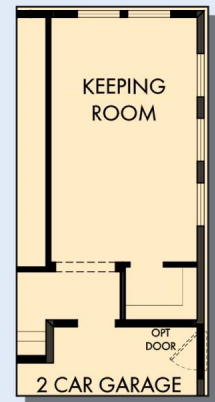
OPTIONAL EXTENDED SCREENED PORCH
AT DINING AND FAMILY



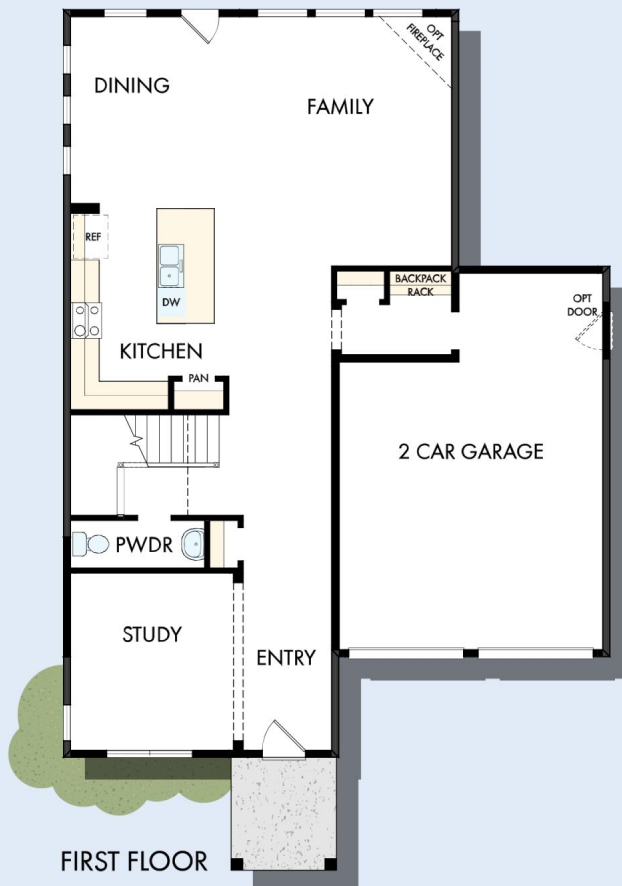
OPTIONAL SCREENED
PORCH AT DINING



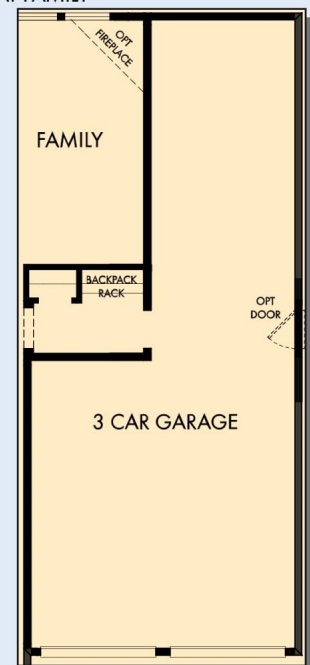
OPTIONAL BEDROOM 5
WITH BATH 3 AT FAMILY



OPTIONAL KEEPING
ROOM AT FAMILY



FIRST FLOOR



OPTIONAL 3 CAR GARAGE

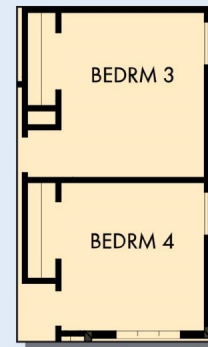
THE WHEATLEY



OWNER'S BATH
OPTIONAL DROP IN
TUB WITH SEPARATE
SHOWER AT
OWNER'S BATH



OWNER'S
BATH
OPTIONAL SUPER
SHOWER AT
OWNER'S BATH



OPTIONAL BEDROOM 4
AT RETREAT



SECOND FLOOR

For additional options, please visit DavidWeekleyHomes.com



See a David Weekley Homes Sales Consultant for details.
Prices, plans, dimensions, features, specifications, materials,
and availability of homes or communities are subject to
change without notice or obligation. Illustrations are artist's
depictions only and may differ from completed improvements.
Copyright © 2021 David Weekley Homes - All Rights Reserved.
Charleston, SC

DavidWeekleyHomes.com