

THE RYMER



6235 SAN - E

Exterior E

2,840 - 3,398 sq. ft.

4 Bedrooms

3 Full Baths

2 - 3 Car Garage



6235 SAN - D

Exterior D

Shane



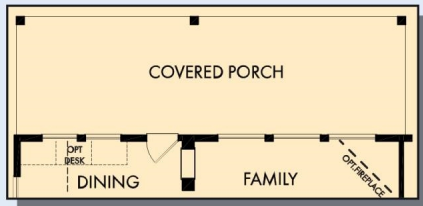
We're living our fairytale thanks to David Weekley

We can't say enough about the level of quality and care we received while building our home. Our builder was with us every step of the way to make sure our every need and desire was being met! The team truly went above and beyond at every turn to give us the home of our dreams! We will definitely recommend David Weekley to anyone looking to build a new home!

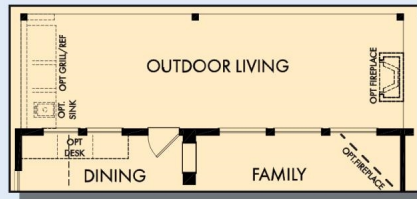
**David Weekley
Homes**

THE RYMER

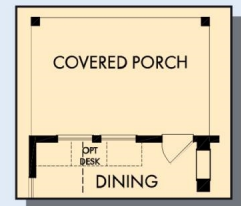
2,840 - 3,398 sq. ft. • 4 Bedrooms • 3 Full Baths • 2 - 3 Car Garage



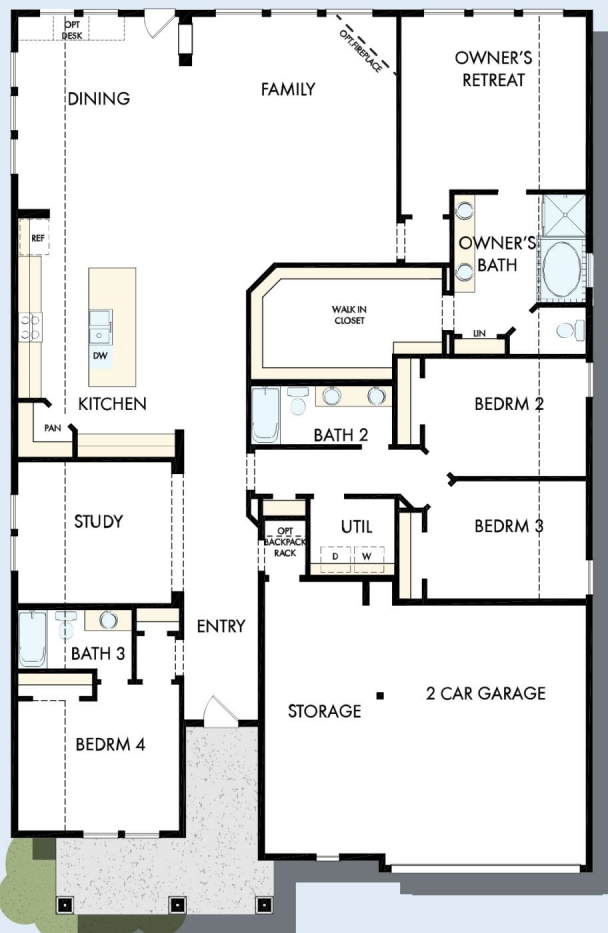
OPTIONAL EXTENDED COVERED PORCH
AT DINING AND FAMILY



OPTIONAL OUTDOOR LIVING
AT DINING AND FAMILY



OPTIONAL COVERED PORCH
AT DINING



FIRST FLOOR



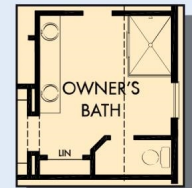
OPTIONAL EXTENDED
OWNER'S RETREAT



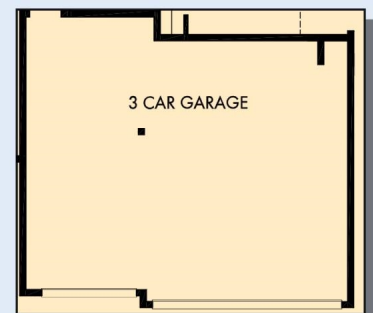
FIRST FLOOR WITH OPTIONAL
SECOND FLOOR BONUS



OPTIONAL SUPER
SHOWER AT
OWNER'S BATH

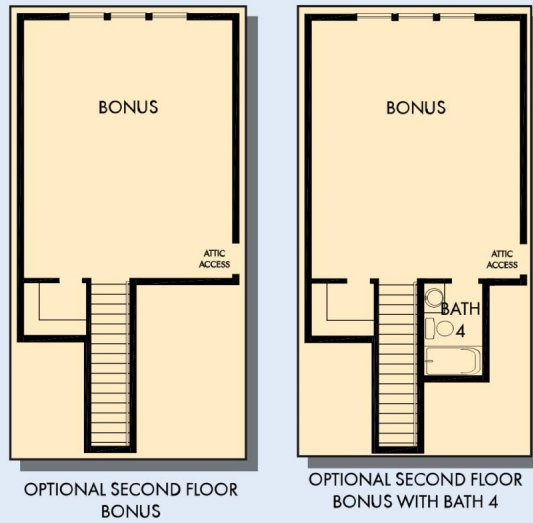


OPTIONAL SHOWER
AT OWNER'S BATH



OPTIONAL 3 CAR GARAGE

THE RYMER



For additional options, please visit DavidWeekleyHomes.com



See a David Weekley Homes Sales Consultant for details. Prices, plans, dimensions, features, specifications, materials, and availability of homes or communities are subject to change without notice or obligation. Illustrations are artist's depictions only and may differ from completed improvements. Copyright © 2022 David Weekley Homes - All Rights Reserved. San Antonio, TX

DavidWeekleyHomes.com