

# THE MARYLAND

2,597 - 2,603 sq. ft.

---

4 Bedrooms

---

3 Full Baths

---

0 - 1 Half Baths

---

2 Car Garage

## Chelsea



### **Incredible Experience, Incredible Home!**

We trusted the team from Day 1 and couldn't have asked for a better experience. The attention to detail was fantastic, and we felt as if the DWH team had a personal interest in the success of our home. The process was well defined and every team member set very clear expectations. We love every inch of our home, and we'd definitely recommend DWH!

## Shane



### **We're living our fairytale thanks to David Weekley**

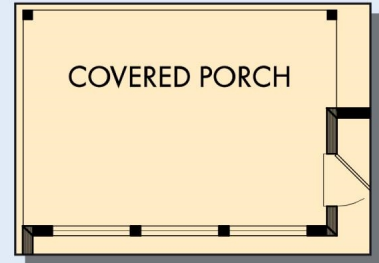
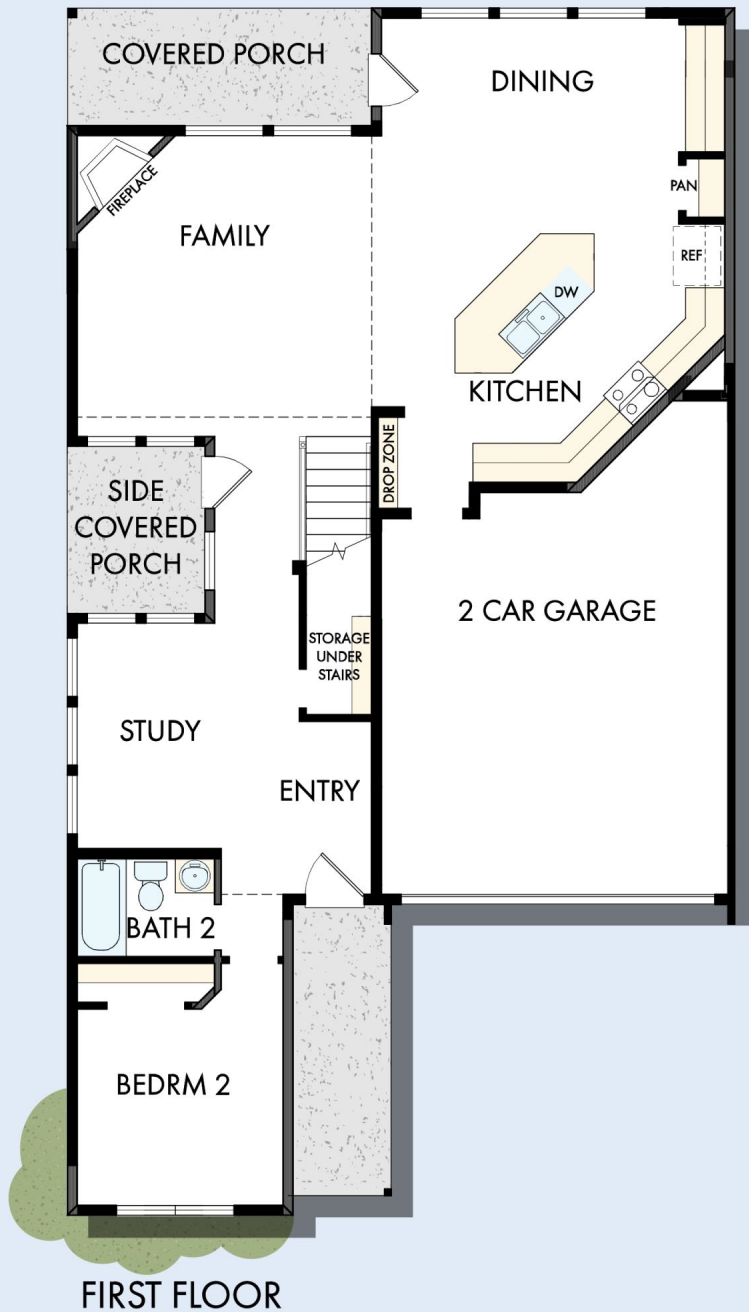
We can't say enough about the level of quality and care we received while building our home. Our builder was with us every step of the way to make sure our every need and desire was being met! The team truly went above and beyond at every turn to give us the home of our dreams! We will definitely recommend David Weekley to anyone looking to build a new home!

**David Weekley  
Homes**

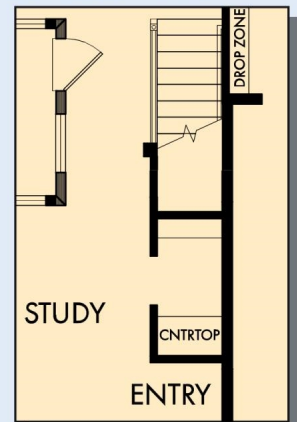


# THE MARYLAND

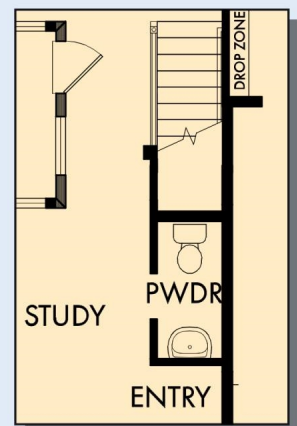
2,597 - 2,603 sq. ft. • 4 Bedrooms • 3 Full Baths • 0 - 1 Half Baths • 2 Car Garage



OPTIONAL EXTENDED COVERED PORCH

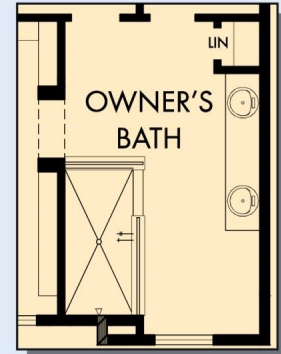


OPTIONAL POCKET OFFICE AT STUDY



OPTIONAL POWDER BATH AT STUDY

# THE MARYLAND



OPTIONAL SUPER SHOWER  
AT OWNER'S BATH



OPTIONAL DROP-IN TUB  
WITH SEPARATE SHOWER  
AT OWNER'S BATH

For additional options, please visit [DavidWeekleyHomes.com](http://DavidWeekleyHomes.com)

See a David Weekley Homes Sales Consultant for details. Prices, plans, dimensions, features, specifications, materials, and availability of homes or communities are subject to change without notice or obligation. Illustrations are artist's depictions only and may differ from completed improvements. Copyright © 2022 David Weekley Homes - All Rights Reserved. Dallas/Ft. Worth, TX

**DavidWeekleyHomes.com**

