

# THE GLENMEADE



6216 SAN - A

Exterior A

3,186 - 3,199 sq. ft.

4 - 5 Bedrooms

3 - 4 Full Baths

0 - 1 Half Baths

3 Car Garage



6216 SAN - B

Exterior B

## Greg and Jane



### Exceptional service and experience!

We have been fortunate enough to build several new homes and this was by far the best experience that we've encountered. We actually debated whether or not we wanted to go through the home building process again or simply purchase a pre-owned home or a finished new home. So pleased we built! Our Weekley team (sales associate, design consultant and builder) was very professional, courteous, attentive, responsive and pro-active from beginning to end. They've all become our adopted kids! Great overall experience!

**David Weekley  
Homes**



# THE GLENMEADE

3,186 - 3,199 sq. ft. • 4 - 5 Bedrooms • 3 - 4 Full Baths • 0 - 1 Half Baths • 3 Car Garage



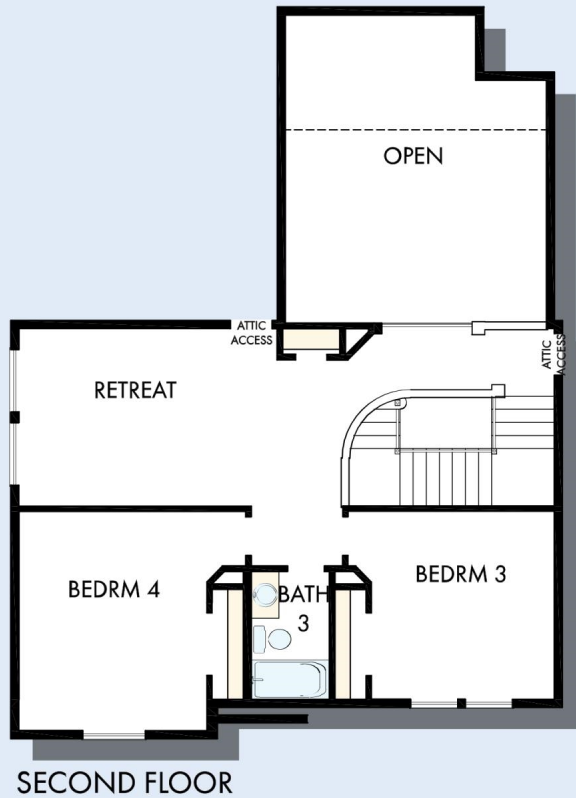
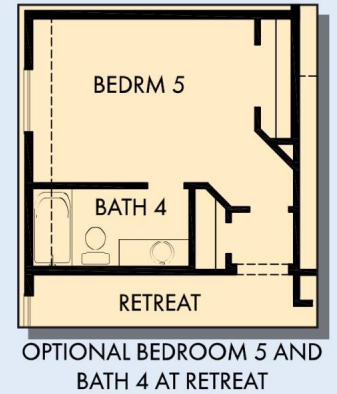
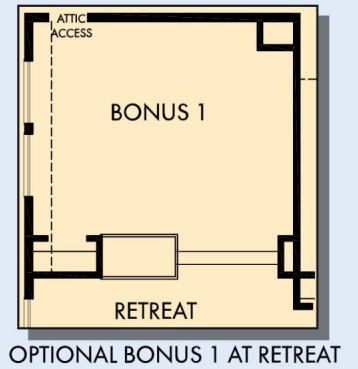
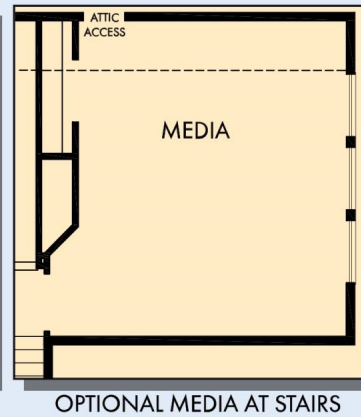
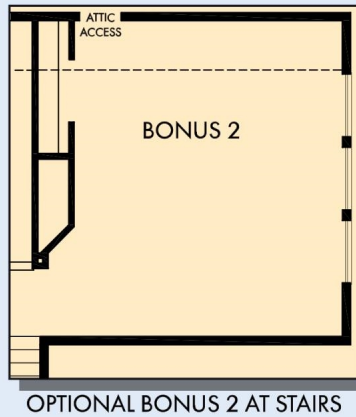
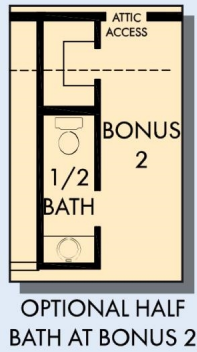
6216 in 2373 SAN

For additional options, please visit [DavidWeekleyHomes.com](http://DavidWeekleyHomes.com)

9/16/2020

**DavidWeekleyHomes.com**

# THE GLENMEADE



For additional options, please visit [DavidWeekleyHomes.com](http://DavidWeekleyHomes.com)

**DavidWeekleyHomes.com**



See a David Weekley Homes Sales Consultant for details. Prices, plans, dimensions, features, specifications, materials, and availability of homes or communities are subject to change without notice or obligation. Illustrations are artist's depictions only and may differ from completed improvements. Copyright © 2020 David Weekley Homes - All Rights Reserved. San Antonio, TX