

THE BROOKVILLE



Exterior A



Exterior B

2,725 - 3,664 sq. ft.

4 - 5 Bedrooms

3 - 4 Full Baths

2 Car Garage

Sandra A.



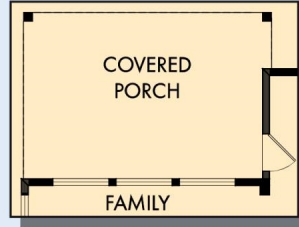
Best Builder Around

We have loved DW homes ever since our mother bought one. The quality of their work, attention to detail and willingness to respond to questions is top notch. The biggest thing we love about DW is their focus on customer service. They are not your typical builder who meets with you to get a check and forgets about you till walk thru. They are your partner through the entire process. Each step of the way they know they are building your dream house and really treat you like family. I would recommend them hands down. My husband sells real estate and has dealt with numerous builders around town. He always directs his clients to DW and signs their praises.

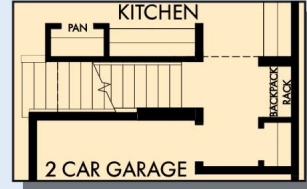
**David Weekley
Homes**

THE BROOKVILLE

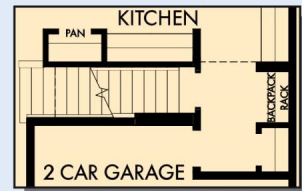
2,725 - 3,664 sq. ft. • 4 - 5 Bedrooms • 3 - 4 Full Baths • 2 Car Garage



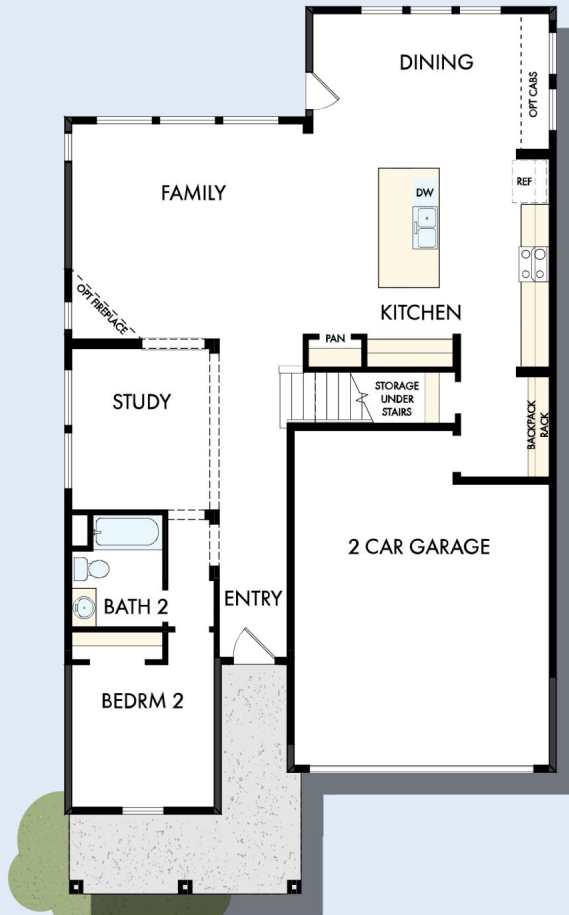
OPTIONAL EXTENDED COVERED PORCH AT FAMILY



FIRST FLOOR WITH OPTIONAL FINISHED BASEMENT



FIRST FLOOR WITH OPTIONAL BASEMENT

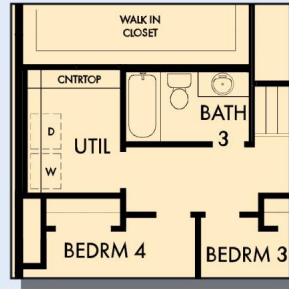


FIRST FLOOR

THE BROOKVILLE



OPTIONAL SUPER SHOWER AT OWNER'S BATH



SECOND FLOOR WITH OPTIONAL BASEMENT

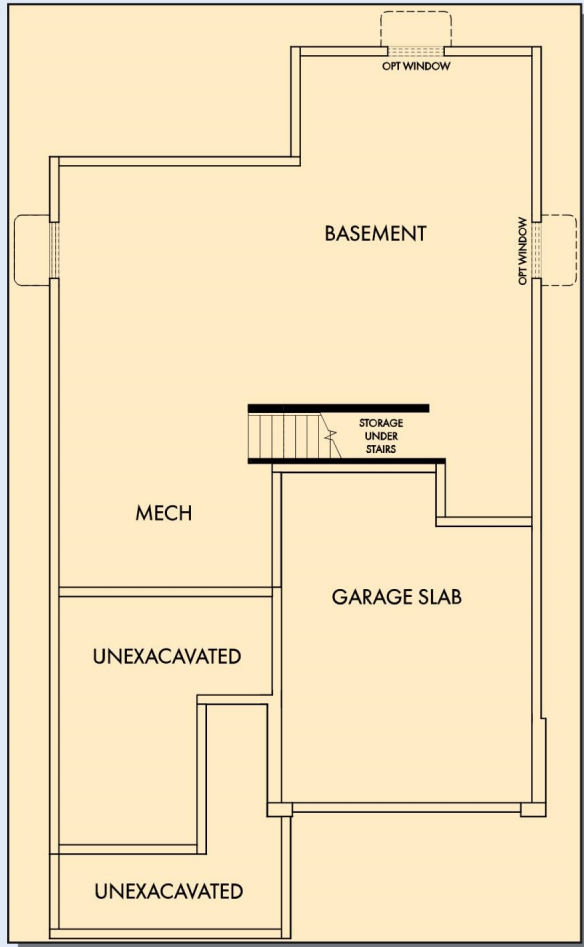


SECOND FLOOR

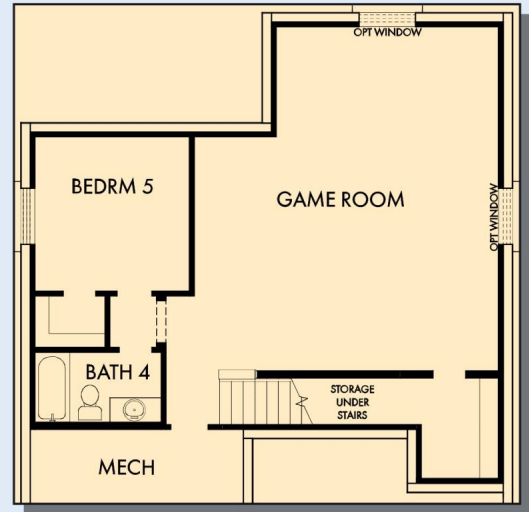
For additional options, please visit DavidWeekleyHomes.com

DavidWeekleyHomes.com

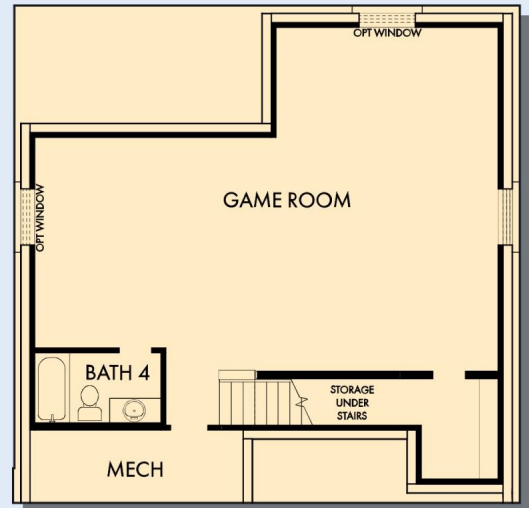
THE BROOKVILLE



OPTIONAL BASEMENT



OPTIONAL GAME ROOM WITH BEDROOM 5 AND BATH 4 AT BASEMENT



OPTIONAL GAME ROOM WITH BATH 4 AT BASEMENT

For additional options, please visit DavidWeekleyHomes.com

See a David Weekley Homes Sales Consultant for details. Prices, plans, dimensions, features, specifications, materials, and availability of homes or communities are subject to change without notice or obligation. Illustrations are artist's depictions only and may differ from completed improvements. Copyright © 2024 David Weekley Homes - All Rights Reserved. Indianapolis, IN

DavidWeekleyHomes.com



EQUAL HOUSING OPPORTUNITY