

# THE FORESTCREST



Exterior A

2,831 - 3,044 sq. ft.

3 - 6 Bedrooms

2 - 5 Full Baths

1 Half Bath

2 Car Garage



Exterior B

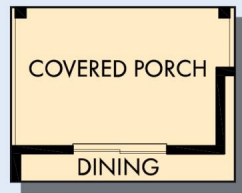


Exterior C

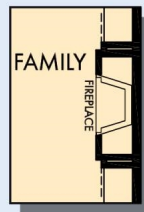
David Weekley  
Homes

# THE FORESTCREST

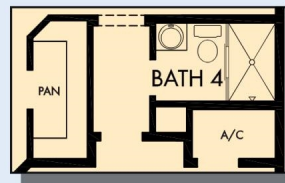
2,831 - 3,044 sq. ft. • 3 - 6 Bedrooms • 2 - 5 Full Baths • 1 Half Bath • 2 Car Garage



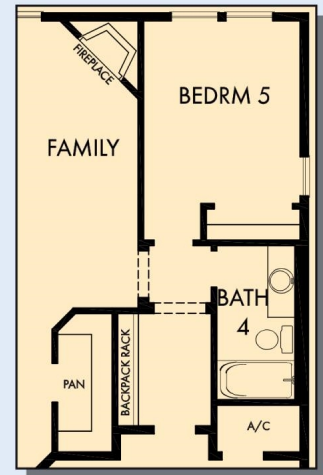
OPTIONAL EXTENDED  
COVERED PORCH  
AT DINING



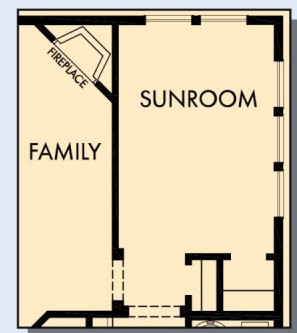
OPTIONAL  
WALL FIREPLACE  
AT FAMILY



OPTIONAL BATH 4  
AT POWDER



OPTIONAL BEDROOM 5 WITH  
BATH 4 AT FAMILY



OPTIONAL SUNROOM  
AT FAMILY



FIRST FLOOR

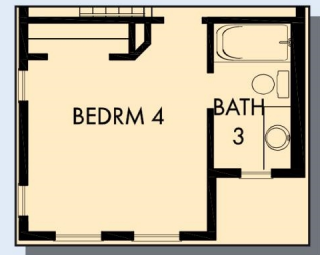
# THE FORESTCREST



OPTIONAL SUPER  
SHOWER AT  
OWNER'S BATH



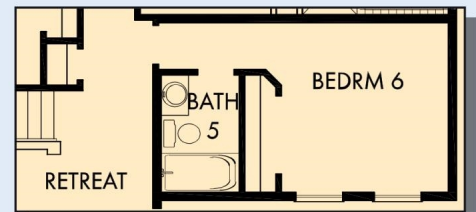
OPTIONAL BEDROOM 4  
AT RETREAT



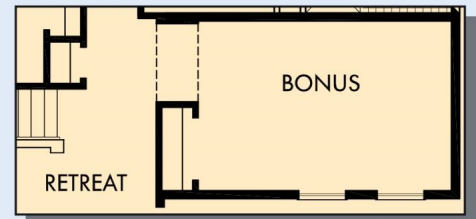
OPTIONAL BEDROOM 4 WITH  
BATH 3 AT RETREAT



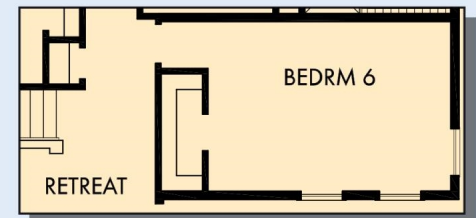
SECOND FLOOR



OPTIONAL BEDROOM 6 WITH BATH 5 AT HALL



BONUS AT HALL



OPTIONAL BEDROOM 6 AT HALL

For additional options, please visit [DavidWeekleyHomes.com](http://DavidWeekleyHomes.com)

**DavidWeekleyHomes.com**



See a David Weekley Homes Sales Consultant for details. Prices, plans, dimensions, features, specifications, materials, and availability of homes or communities are subject to change without notice or obligation. Illustrations are artist's depictions only and may differ from completed improvements. Copyright © 2020 David Weekley Homes - All Rights Reserved. POR, OR