

# THE MOUNT POWELL



6805DEN-A

Exterior A



6805 DEN - B

Exterior B

1,864 - 1,893 sq. ft.

3 - 5 Bedrooms

2 - 4 Full Baths

1 Half Bath

2 Car Garage

**Shane**



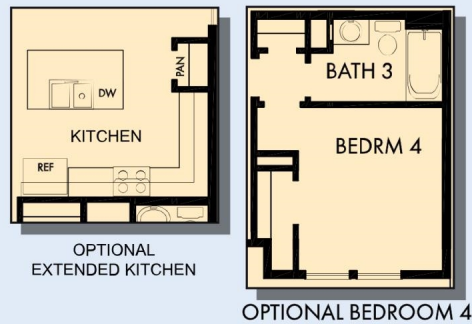
**We're living our fairytale thanks to David Weekley**

We can't say enough about the level of quality and care we received while building our home. Our builder was with us every step of the way to make sure our every need and desire was being met! The team truly went above and beyond at every turn to give us the home of our dreams! We will definitely recommend David Weekley to anyone looking to build a new home!

**David Weekley  
Homes**

# THE MOUNT POWELL

1,864 - 1,893 sq. ft. • 3 - 5 Bedrooms • 2 - 4 Full Baths • 1 Half Bath • 2 Car Garage



6805 in 2628 DEN

For additional options, please visit [DavidWeekleyHomes.com](http://DavidWeekleyHomes.com)

7/22/2019

**DavidWeekleyHomes.com**



# THE MOUNT POWELL



OPTIONAL SUPER SHOWER  
AT OWNER'S BATH

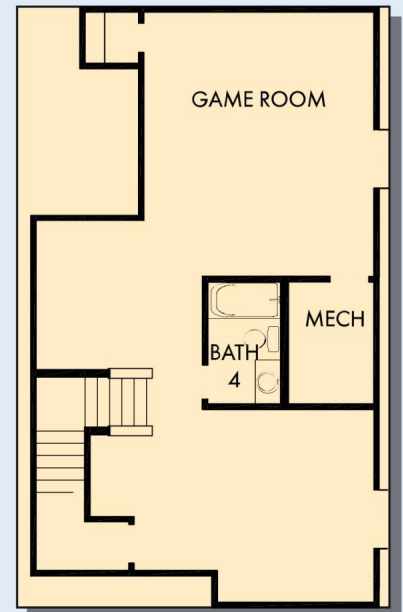
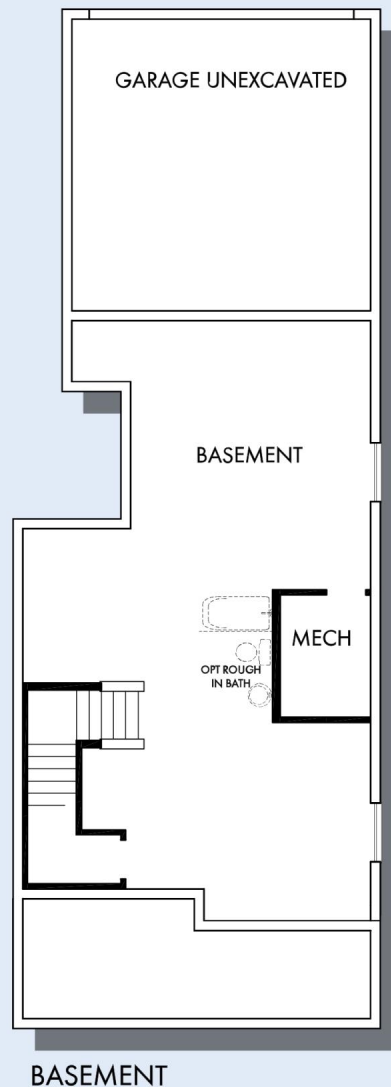


SECOND FLOOR

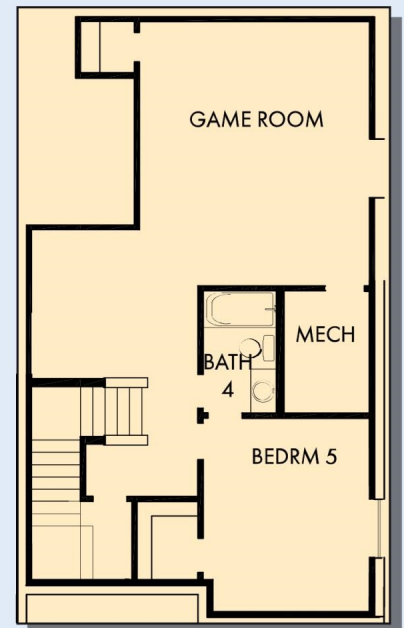
For additional options, please visit [DavidWeekleyHomes.com](http://DavidWeekleyHomes.com)

**DavidWeekleyHomes.com**

# THE MOUNT POWELL



OPTIONAL GAMEROOM WITH BATH 4



OPTIONAL BEDROOM 5 AND BATH 4  
WITH OPTIONAL GAME ROOM

For additional options, please visit [DavidWeekleyHomes.com](http://DavidWeekleyHomes.com)

**DavidWeekleyHomes.com**



See a David Weekley Homes Sales Consultant for details. Prices, plans, dimensions, features, specifications, materials, and availability of homes or communities are subject to change without notice or obligation. Illustrations are artist's depictions only and may differ from completed improvements. Copyright © 2019 David Weekley Homes - All Rights Reserved. Denver, CO