

THE DELAFIELD



Exterior G

2,746 - 3,322 sq. ft.

4 Bedrooms

3 - 4 Full Baths

0 - 2 Half Baths

3 Car Garage



Exterior H

Rich C.



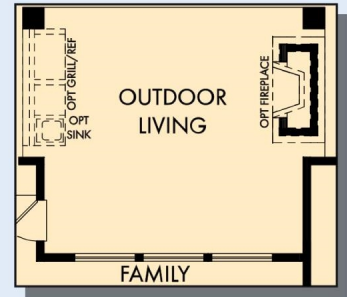
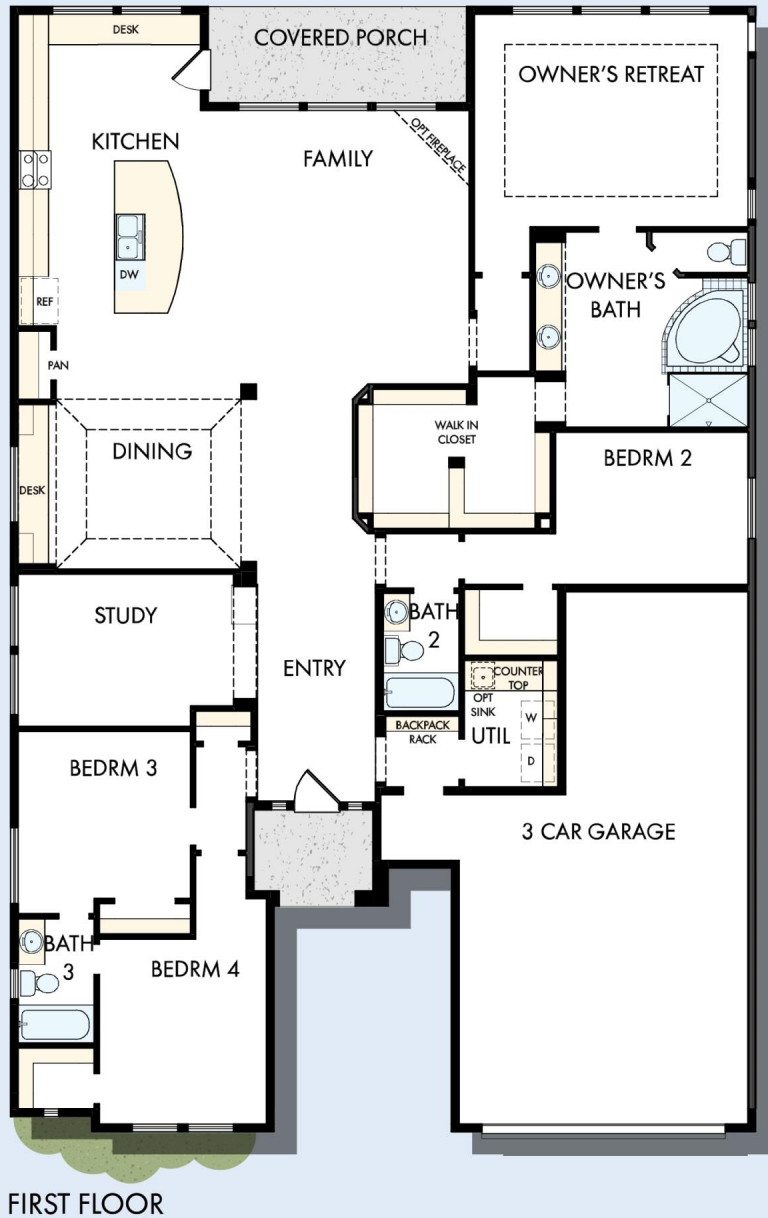
Wonderful Experience!

If there is anything that sets David Weekley apart from other builders it is their customer service. I felt like a member of the family from the first time I walked into the model, to when I received my keys and saw the wonderful housewarming presents that were left for me, up to the present when I see my salesman in the neighborhood. I felt like they really took the time to understand what I was looking for and then came through with my dream home. I would highly recommend David Weekley to anyone looking to buy and/or build a home.

**David Weekley
Homes**

THE DELAFIELD

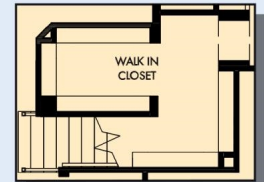
2,746 - 3,322 sq. ft. • 4 Bedrooms • 3 - 4 Full Baths • 0 - 2 Half Baths • 3 Car Garage



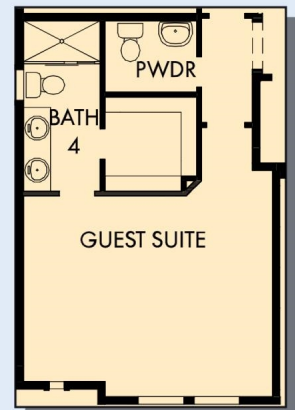
OPTIONAL OUTDOOR LIVING AT FAMILY



OPTIONAL SUPER SHOWER AT OWNER'S BATH

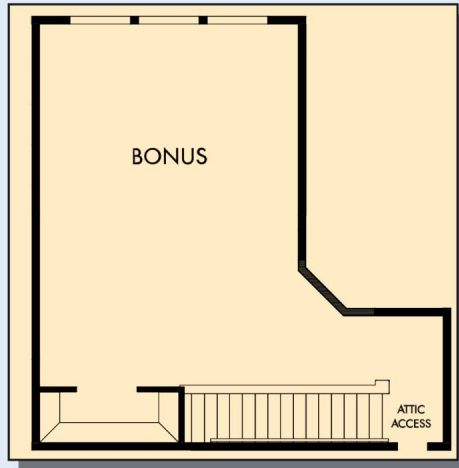


FIRST FLOOR WITH OPTIONAL SECOND FLOOR BONUS

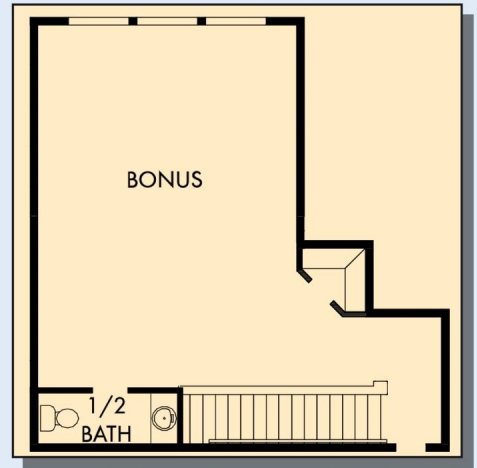


OPTIONAL GUEST SUITE AT BEDROOM 3 AND 4

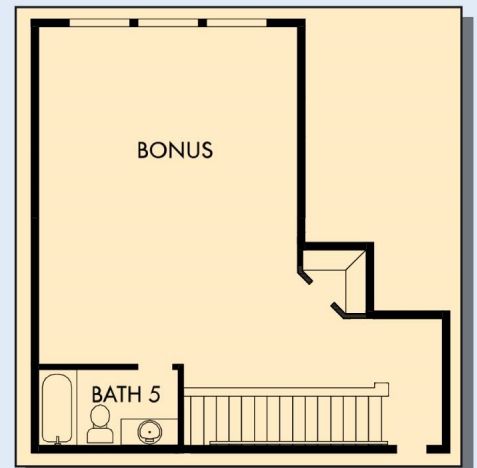
THE DELAFIELD



OPTIONAL SECOND FLOOR BONUS



OPTIONAL SECOND FLOOR BONUS WITH HALF BATH



OPTIONAL SECOND FLOOR BONUS WITH BATH 5

For additional options, please visit DavidWeekleyHomes.com

See a David Weekley Homes Sales Consultant for details. Prices, plans, dimensions, features, specifications, materials, and availability of homes or communities are subject to change without notice or obligation. Illustrations are artist's depictions only and may differ from completed improvements. Copyright © 2024 David Weekley Homes - All Rights Reserved. Austin, TX

DavidWeekleyHomes.com



EQUAL HOUSING OPPORTUNITY