

THE HARTMAN



Exterior A

2,783 - 3,735 sq. ft.

3 Bedrooms

3 - 4 Full Baths

1 - 2 Half Baths

3 - 4 Car Garage



Exterior B

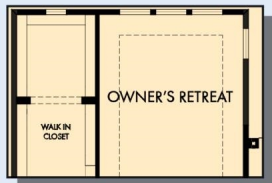


Exterior C

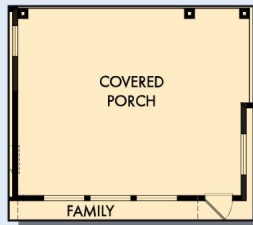
David Weekley
Homes

THE HARTMAN

2,783 - 3,735 sq. ft. • 3 Bedrooms • 3 - 4 Full Baths • 1 - 2 Half Baths • 3 - 4 Car Garage



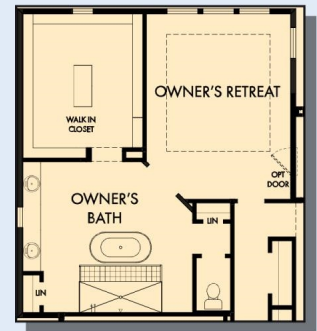
OPTIONAL EXTENDED OWNER'S RETREAT



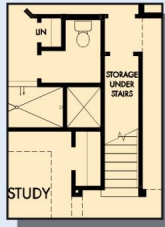
OPTIONAL EXTENDED COVERED PORCH



OPTIONAL FREE STANDING TUB
WITH SUPER SHOWER
AT OWNER'S BATH



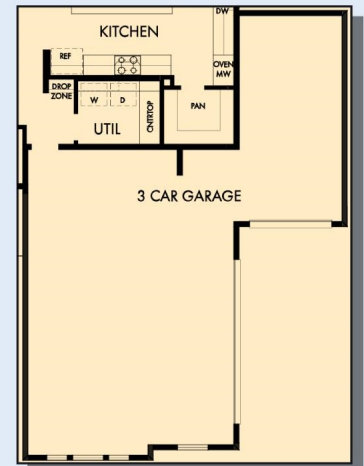
OPTIONAL SUPER OWNER'S BATH



FIRST FLOOR WITH OPTIONAL
SECOND FLOOR BONUS



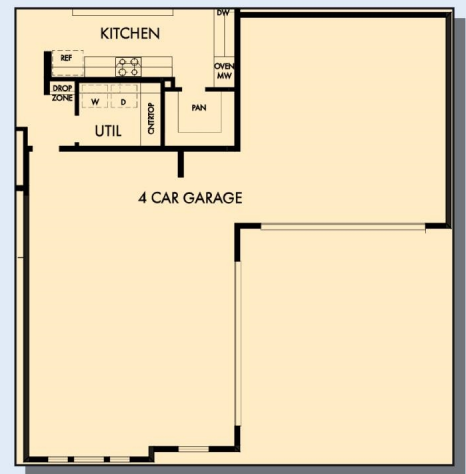
OPTIONAL OUTDOOR LIVING



OPTIONAL 3 CAR SPLIT GARAGE



FIRST FLOOR



OPTIONAL 4 CAR GARAGE

THE HARTMAN



OPTIONAL SECOND FLOOR BONUS



OPTIONAL SECOND FLOOR BONUS
WITH BATH 4

For additional options, please visit DavidWeekleyHomes.com



See a David Weekley Homes Sales Consultant for details.
Prices, plans, dimensions, features, specifications, materials,
and availability of homes or communities are subject to
change without notice or obligation. Illustrations are artist's
depictions only and may differ from completed improvements.
Copyright © 2022 David Weekley Homes - All Rights Reserved.
Austin, TX

DavidWeekleyHomes.com