

THE GARMAN



Exterior A



Exterior B

1,966 sq. ft.

3 Bedrooms

2 Full Baths

1 Half Bath

2 Car Garage

Chelsea



Incredible Experience, Incredible Home!

We trusted the team from Day 1 and couldn't have asked for a better experience. The attention to detail was fantastic, and we felt as if the DWH team had a personal interest in the success of our home. The process was well defined and every team member set very clear expectations. We love every inch of our home, and we'd definitely recommend DWH!

CENTRAL LIVING
by David Weekley Homes

THE GARMAN

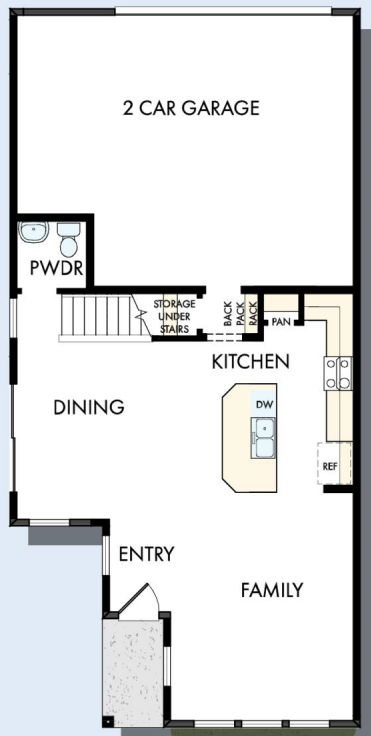
1,966 sq. ft. • 3 Bedrooms • 2 Full Baths • 1 Half Bath • 2 Car Garage



OPTIONAL SEPARATE
TUB AND SHOWER
AT OWNER'S BATH



SECOND FLOOR WITH
OPTIONAL SIDE VISIBILITY



FIRST FLOOR



SECOND FLOOR

9790 in 4478 JAC

For additional options, please visit DavidWeekleyHomes.com

6/23/2020



See a David Weekley Homes Sales Consultant for details. Prices, plans, dimensions, features, specifications, materials, and availability of homes or communities are subject to change without notice or obligation. Illustrations are artist's depictions only and may differ from completed improvements. Copyright © 2020 David Weekley Homes - All Rights Reserved. Jacksonville, FL

CENTRAL LIVING
by **David Weekley Homes**