

THE WEIDMAN



6317DAL-C

Exterior C

3,264 - 3,566 sq. ft.

5 Bedrooms

4 Full Baths

0 - 1 Half Baths

2 Car Garage



Exterior D

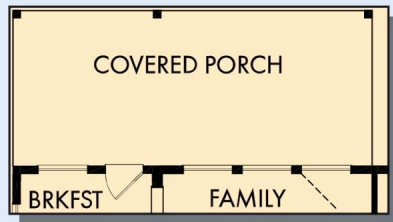


Exterior E

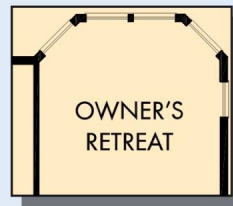
David Weekley
Homes

THE WEIDMAN

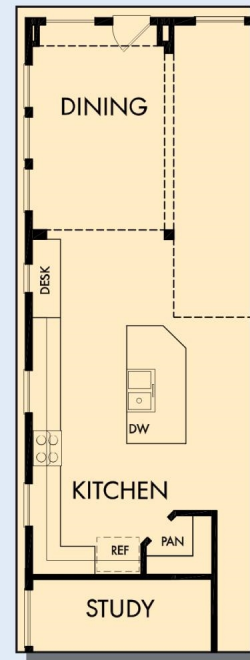
3,264 - 3,566 sq. ft. • 5 Bedrooms • 4 Full Baths • 0 - 1 Half Baths • 2 Car Garage



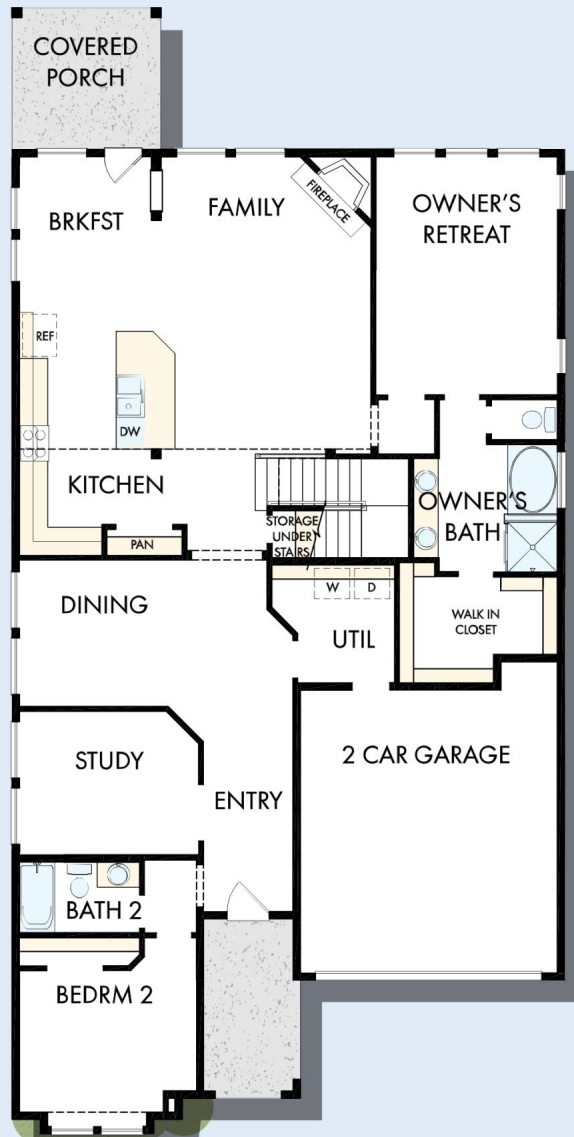
OPTIONAL EXTENDED COVERED PORCH AT BREAKFAST



OPTIONAL BAY WINDOW AT OWNER'S RETREAT



OPTIONAL SINGLE DINING



FIRST FLOOR

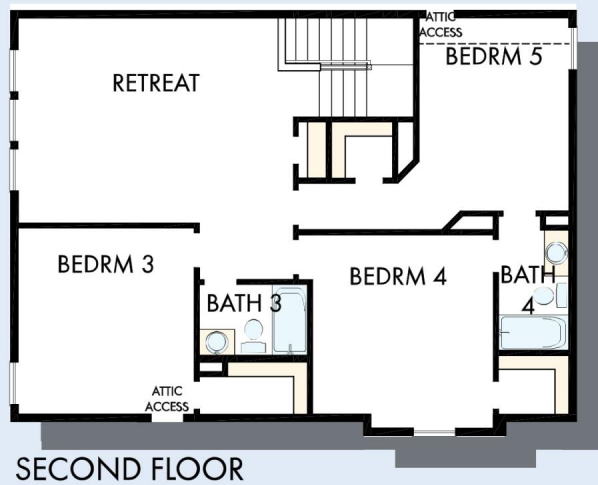
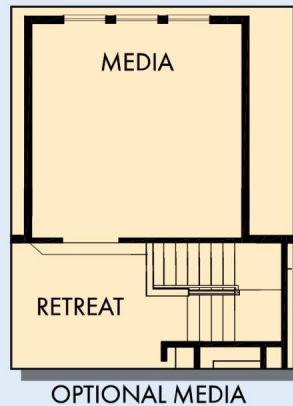


OPTIONAL SEPARATE TUB AND SHOWER AT OWNER'S BATH



OPTIONAL SUPER SHOWER AT OWNER'S BATH

THE WEIDMAN



For additional options, please visit DavidWeekleyHomes.com



See a David Weekley Homes Sales Consultant for details. Prices, plans, dimensions, features, specifications, materials, and availability of homes or communities are subject to change without notice or obligation. Illustrations are artist's depictions only and may differ from completed improvements. Copyright © 2020 David Weekley Homes - All Rights Reserved. Dallas/Ft. Worth, TX

DavidWeekleyHomes.com