

THE PALOMAR



6236SAN-D

Exterior D

2,880 - 2,948 sq. ft.

4 Bedrooms

3 Full Baths

1 Half Bath

2 - 3 Car Garage



6236 SAN-G

Exterior G

Greg and Jane



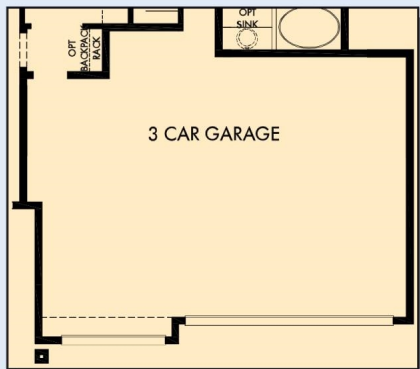
Exceptional service and experience!

We have been fortunate enough to build several new homes and this was by far the best experience that we've encountered. We actually debated whether or not we wanted to go through the home building process again or simply purchase a pre-owned home or a finished new home. So pleased we built! Our Weekley team (sales associate, design consultant and builder) was very professional, courteous, attentive, responsive and pro-active from beginning to end. They've all become our adopted kids! Great overall experience!

**David Weekley
Homes**

THE PALOMAR

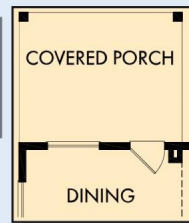
2,880 - 2,948 sq. ft. • 4 Bedrooms • 3 Full Baths • 1 Half Bath • 2 - 3 Car Garage



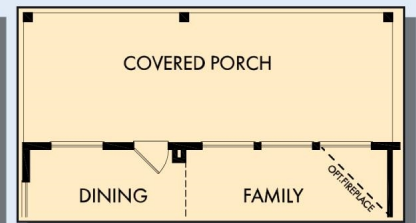
OPTIONAL 3 CAR GARAGE



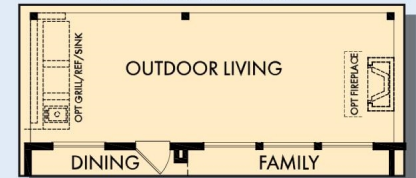
OPTIONAL BAY WINDOW AT OWNER'S RETREAT



OPTIONAL COVERED PORCH AT DINING



OPTIONAL EXTENDED COVERED PORCH AT DINING AND FAMILY



OPTIONAL OUTDOOR LIVING AT DINING AND FAMILY



FIRST FLOOR

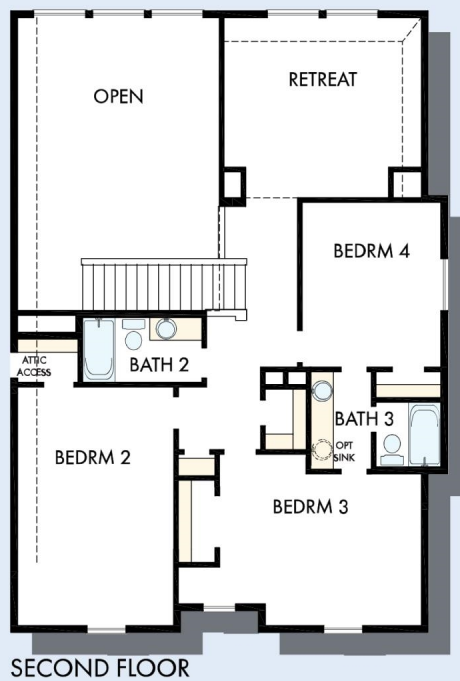


OPTIONAL SHOWER AT OWNER'S BATH



OPTIONAL SUPER SHOWER AT OWNER'S BATH

THE PALOMAR



For additional options, please visit DavidWeekleyHomes.com



See a David Weekley Homes Sales Consultant for details.
Prices, plans, dimensions, features, specifications, materials,
and availability of homes or communities are subject to
change without notice or obligation. Illustrations are artist's
depictions only and may differ from completed improvements.
Copyright © 2021 David Weekley Homes - All Rights Reserved.
San Antonio, TX

DavidWeekleyHomes.com