

THE CAMILLE



Exterior A



Exterior B

3,489 - 3,521 sq. ft.

4 - 5 Bedrooms

3 - 4 Full Baths

1 Half Bath

3 Car Garage

Greg and Jane



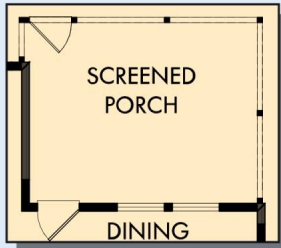
Exceptional service and experience!

We have been fortunate enough to build several new homes and this was by far the best experience that we've encountered. We actually debated whether or not we wanted to go through the home building process again or simply purchase a pre-owned home or a finished new home. So pleased we built! Our Weekley team (sales associate, design consultant and builder) was very professional, courteous, attentive, responsive and pro-active from beginning to end. They've all become our adopted kids! Great overall experience!

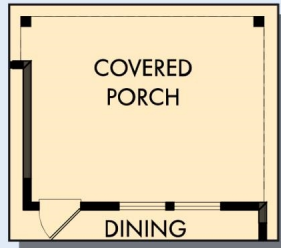
**David Weekley
Homes**

THE CAMILLE

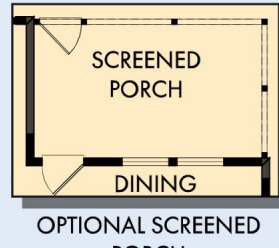
3,489 - 3,521 sq. ft. • 4 - 5 Bedrooms • 3 - 4 Full Baths • 1 Half Bath • 3 Car Garage



OPTIONAL EXTENDED SCREENED PORCH



OPTIONAL EXTENDED COVERED PORCH



OPTIONAL SCREENED PORCH



FIRST FLOOR

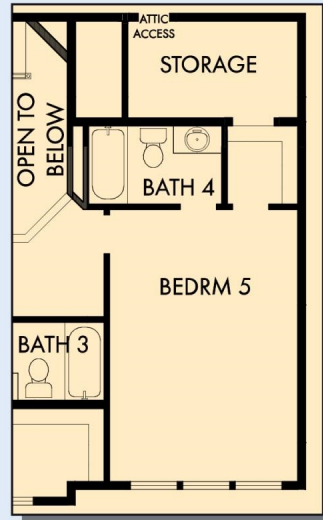


OPTIONAL FREE STANDING TUB WITH SEPARATE SHOWER AT OWNER'S BATH



OPTIONAL SUPER SHOWER AT OWNER'S BATH

THE CAMILLE



OPTIONAL BEDROOM 5 WITH
BATH 4 AT RETREAT



SECOND FLOOR

For additional options, please visit DavidWeekleyHomes.com

See a David Weekley Homes Sales Consultant for details. Prices, plans, dimensions, features, specifications, materials, and availability of homes or communities are subject to change without notice or obligation. Illustrations are artist's depictions only and may differ from completed improvements. Copyright © 2024 David Weekley Homes - All Rights Reserved. Charleston, SC

DavidWeekleyHomes.com

