

THE FITZ



Exterior A

1,741 - 1,755 sq. ft.

3 Bedrooms

2 Full Baths

1 Half Bath

2 Car Garage



Exterior B

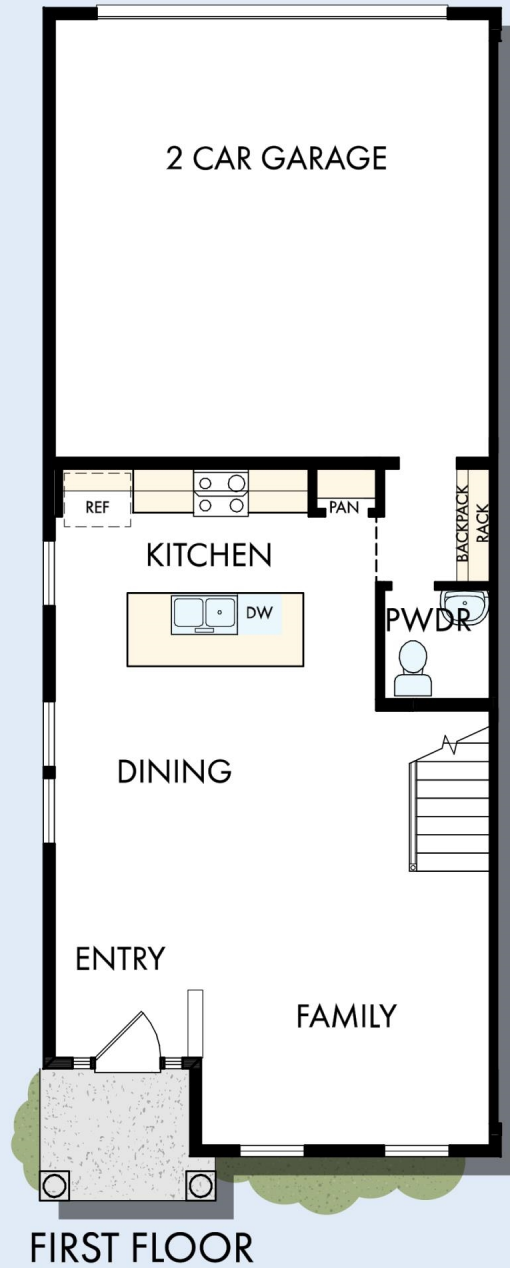


Exterior C

CENTRAL LIVING
by David Weekley Homes

THE FITZ

1,741 - 1,755 sq. ft. • 3 Bedrooms • 2 Full Baths • 1 Half Bath • 2 Car Garage



9798 in 4229 IND

For additional options, please visit DavidWeekleyHomes.com

9/7/2023



See a David Weekley Homes Sales Consultant for details. Prices, plans, dimensions, features, specifications, materials, and availability of homes or communities are subject to change without notice or obligation. Illustrations are artist's depictions only and may differ from completed improvements. Copyright © 2023 David Weekley Homes - All Rights Reserved. Indianapolis, IN

CENTRAL LIVING
by David Weekley Homes