

THE SILVERMAN



Exterior B

2,775 - 2,831 sq. ft.

4 - 5 Bedrooms

3 Full Baths

1 Half Bath

2 Car Garage



Exterior D

Perez Family



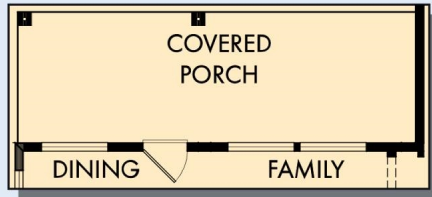
Best Homebuying Experience Ever

We have had several homes built in the past by several homebuilders. Our experience with David Weekley was the best we have ever had. The attention to detail and the customer service were exceptional. Both our sales person and Project Manager kept us well informed and treated us like family. Thanks David Weekley

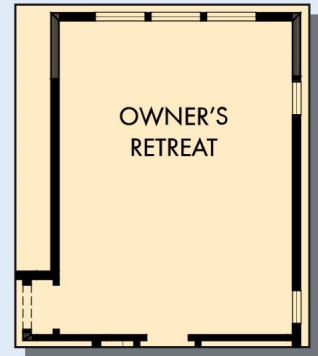
David Weekley
Homes

THE SILVERMAN

2,775 - 2,831 sq. ft. • 4 - 5 Bedrooms • 3 Full Baths • 1 Half Bath • 2 Car Garage



OPTIONAL EXTENDED COVERED PORCH AT DINING AND FAMILY



OPTIONAL EXTENDED OWNER'S RETREAT



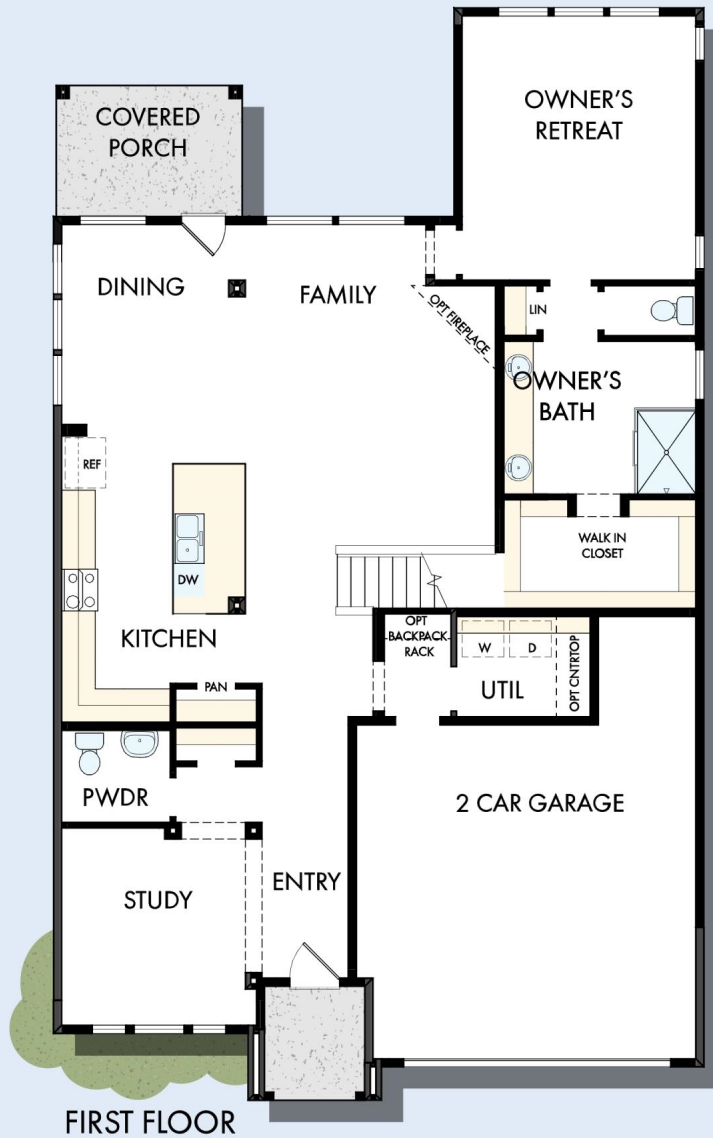
OPTIONAL SUPER SHOWER AT OWNER'S BATH



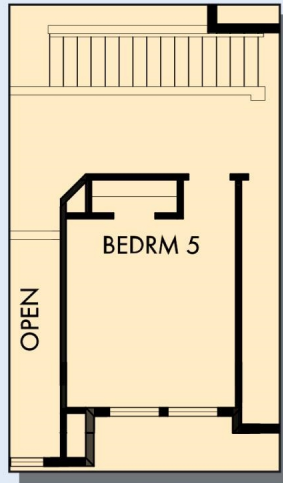
OPTIONAL DROP-IN TUB WITH SEPARATE SHOWER AT OWNER'S BATH



OPTIONAL SLIDE-IN TUB WITH SEPARATE SHOWER AT OWNER'S BATH



THE SILVERMAN



OPTIONAL BEDROOM 5
AT RETREAT



SECOND FLOOR

For additional options, please visit DavidWeekleyHomes.com

See a David Weekley Homes Sales Consultant for details. Prices, plans, dimensions, features, specifications, materials, and availability of homes or communities are subject to change without notice or obligation. Illustrations are artist's depictions only and may differ from completed improvements. Copyright © 2024 David Weekley Homes - All Rights Reserved. Dallas/Ft. Worth, TX

DavidWeekleyHomes.com

