

# THE HONEYCOMB



Exterior A

2,045 - 2,589 sq. ft.

2 - 3 Bedrooms

2 - 3 Full Baths

0 - 2 Half Baths

2 Car Garage



Exterior B

Meg S.



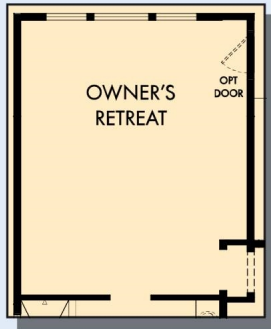
### Truly treated us like family!!!

We enjoyed every part of the home building process. It was amazing! Our builder was always keeping us informed and really went above and beyond to ensure that we love our home. Our warranty rep is outstanding and continues to take care of our every need. I couldn't have asked for a better experience. Our builder and warranty rep continue to be there for us as a family. While our interactions with the DW Family have been highly professional, we are also lucky enough to be able to call them some of our greatest friends! Wouldn't change a thing!

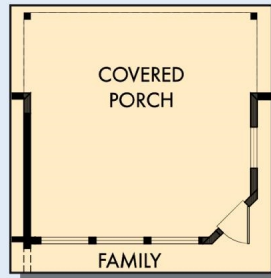
**Encore**  
by David Weekley Homes

# THE HONEYCOMB

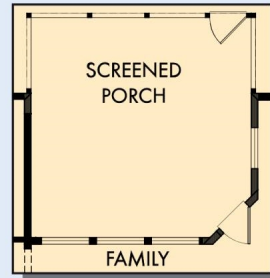
2,045 - 2,589 sq. ft. • 2 - 3 Bedrooms • 2 - 3 Full Baths • 0 - 2 Half Baths • 2 Car Garage



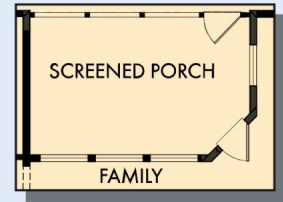
OPTIONAL EXTENDED OWNER'S RETREAT



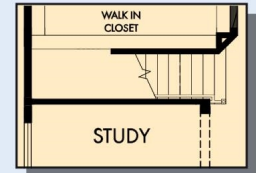
OPTIONAL EXTENDED COVERED PORCH AT FAMILY



OPTIONAL EXTENDED SCREENED PORCH AT FAMILY



OPTIONAL SCREENED PORCH AT FAMILY



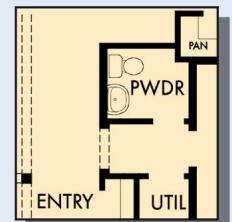
FIRST FLOOR WITH OPTIONAL SECOND FLOOR BONUS



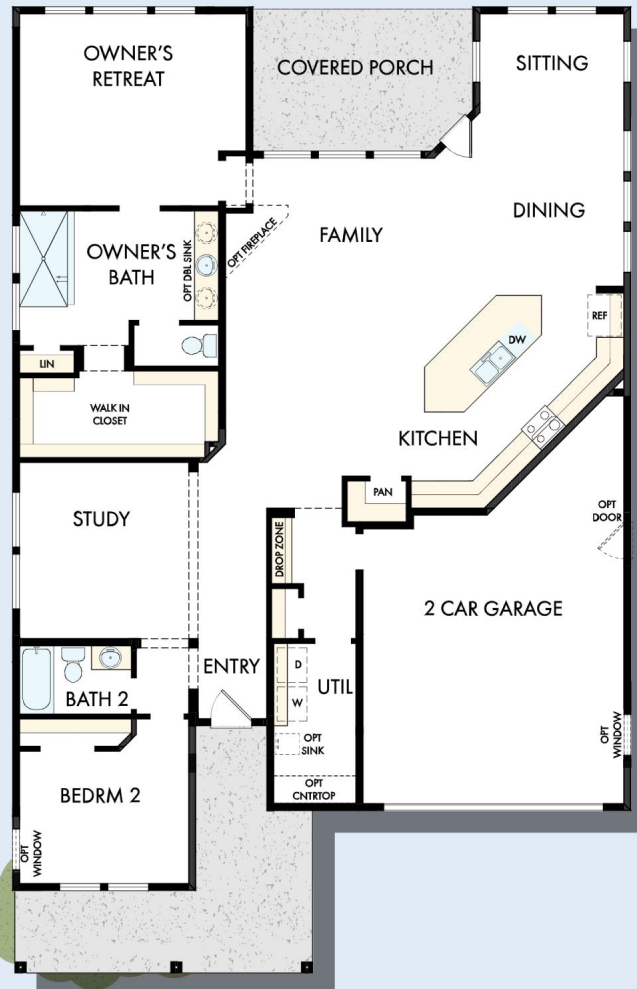
OPTIONAL BEDROOM 3 AT STUDY



OPTIONAL DROP IN TUB WITH SEPARATE SHOWER AT OWNER'S BATH

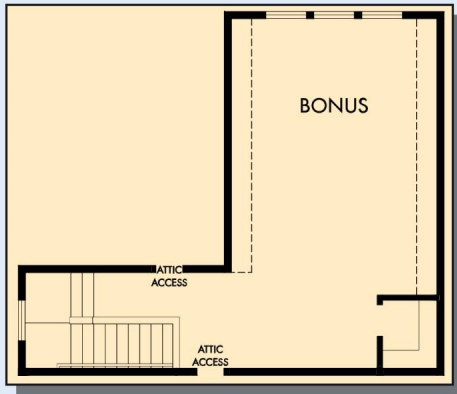


OPTIONAL POWDER BATH AT HALL WAY

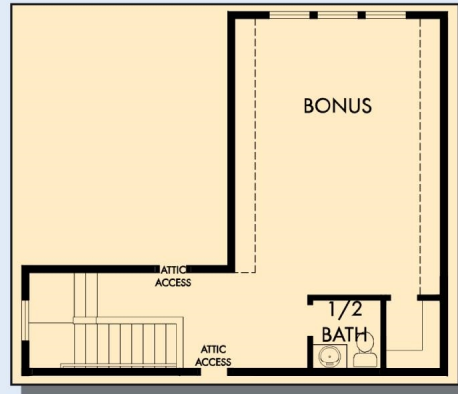


FIRST FLOOR

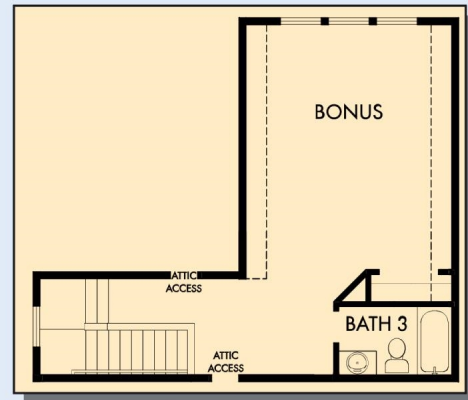
# THE HONEYCOMB



OPTIONAL SECOND FLOOR BONUS



OPTIONAL SECOND FLOOR BONUS WITH HALF BATH



OPTIONAL SECOND FLOOR BONUS WITH BATH 3

For additional options, please visit [DavidWeekleyHomes.com](http://DavidWeekleyHomes.com)

See a David Weekley Homes Sales Consultant for details. Prices, plans, dimensions, features, specifications, materials, and availability of homes or communities are subject to change without notice or obligation. Illustrations are artist's depictions only and may differ from completed improvements. Copyright © 2023 David Weekley Homes - All Rights Reserved. Charleston, SC



**Encore**  
by David Weekley Homes