

# THE ALDERMAN



Exterior A

2,417 - 2,483 sq. ft.

3 Bedrooms

3 Full Baths

2 Car Garage



Exterior B

## Chelsea



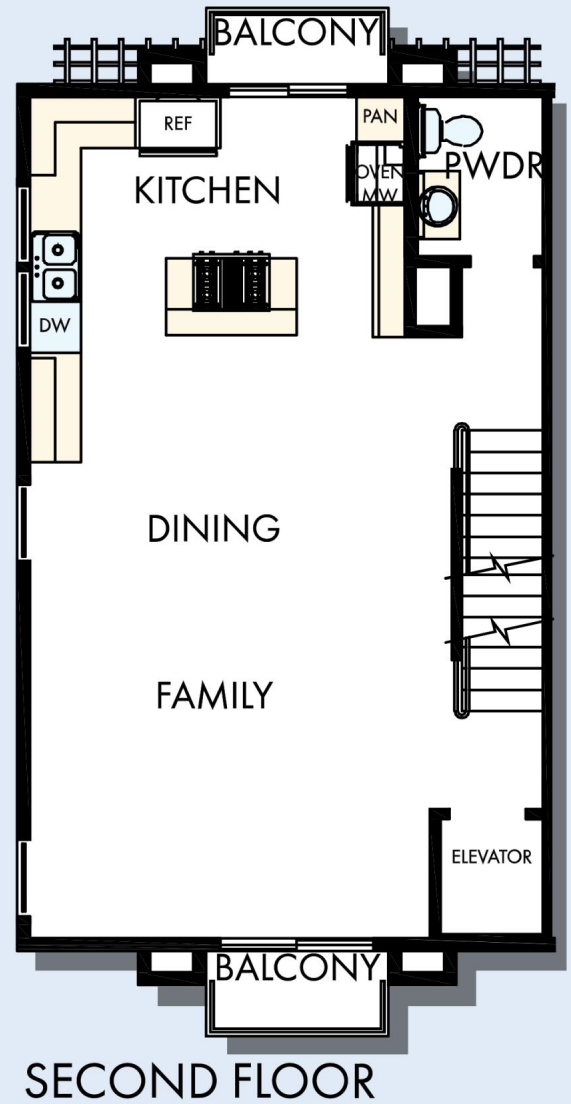
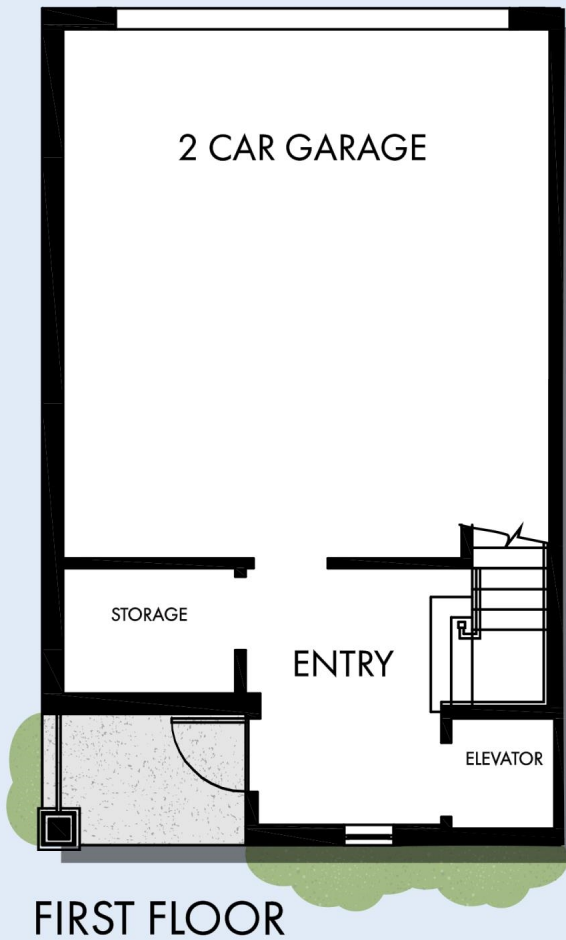
### **Incredible Experience, Incredible Home!**

We trusted the team from Day 1 and couldn't have asked for a better experience. The attention to detail was fantastic, and we felt as if the DWH team had a personal interest in the success of our home. The process was well defined and every team member set very clear expectations. We love every inch of our home, and we'd definitely recommend DWH!

CENTRAL LIVING  
by David Weekley Homes

# THE ALDERMAN

2,417 - 2,483 sq. ft. • 3 Bedrooms • 3 Full Baths • 2 Car Garage



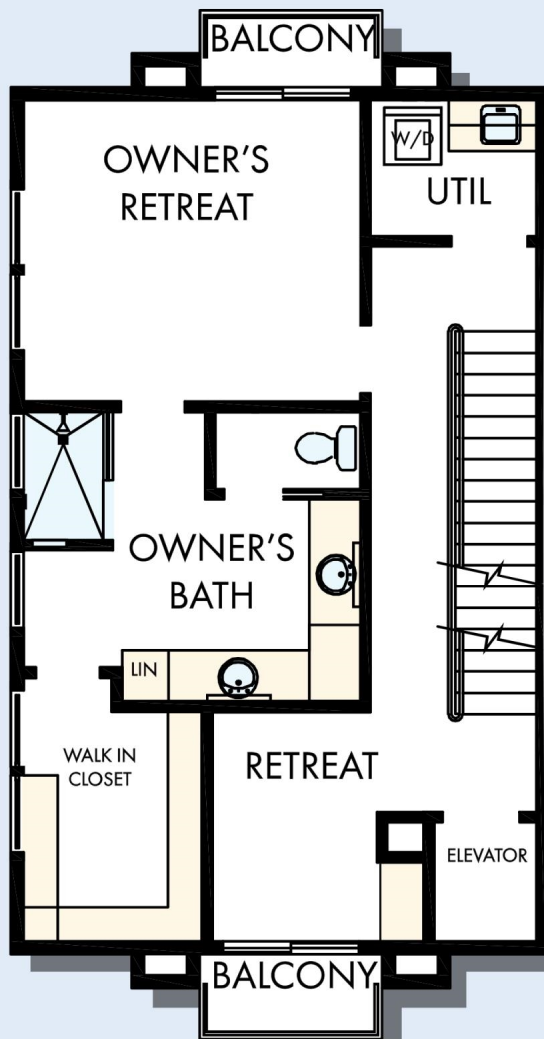
7533 in 6205 SAR

For additional options, please visit [DavidWeekleyHomes.com](http://DavidWeekleyHomes.com)

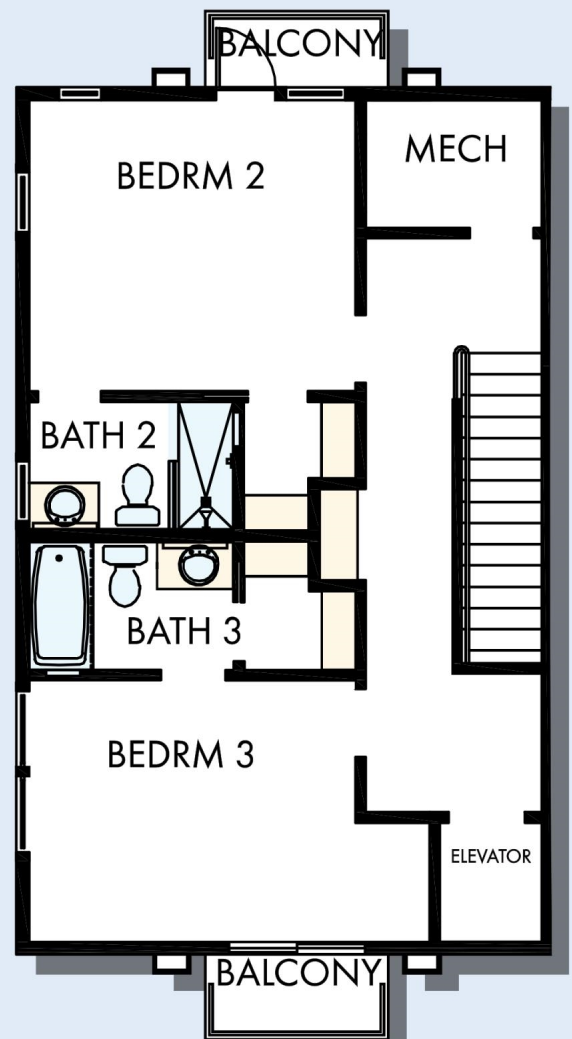
6/14/2019

CENTRAL LIVING  
by David Weekley Homes

# THE ALDERMAN



THIRD FLOOR



FOURTH FLOOR

For additional options, please visit [DavidWeekleyHomes.com](http://DavidWeekleyHomes.com)



See a David Weekley Homes Sales Consultant for details. Prices, plans, dimensions, features, specifications, materials, and availability of homes or communities are subject to change without notice or obligation. Illustrations are artist's depictions only and may differ from completed improvements. Copyright © 2019 David Weekley Homes - All Rights Reserved. Sarasota, FL.

**CENTRAL LIVING**  
by **David Weekley Homes**