

THE ABSHIRE



6299 CTX - A

Exterior A



6299 CTX - B

Exterior B

1,963 - 2,347 sq. ft.

3 Bedrooms

2 - 3 Full Baths

0 - 1 Half Baths

2 Car Garage

Gigi and Papa



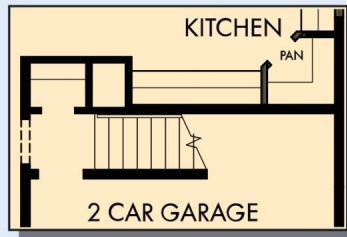
THE BESTest - Better than all the rest!

What an awesome and personal family-oriented company! From touring model homes to selecting "THE ONE" just for us, the experience was delightful and amazing! The entire David Weekley team has been exceptionally wonderful and always available to address any issues we encountered. We have been amazed and impressed by the "Service after the Sale" approach by the David Weekley staff. We would recommend David Weekley homes to anyone. We feel like we are an important member of the Weekley family!

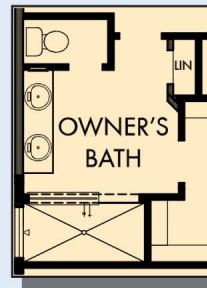
**David Weekley
Homes**

THE ABSHIRE

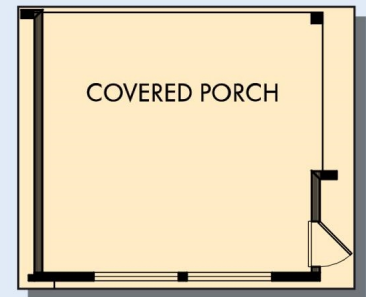
1,963 - 2,347 sq. ft. • 3 Bedrooms • 2 - 3 Full Baths • 0 - 1 Half Baths • 2 Car Garage



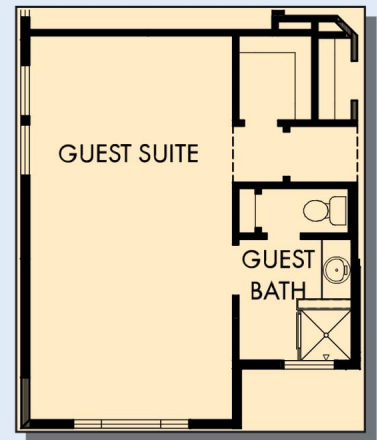
FIRST FLOOR WITH
OPTIONAL BONUS STAIRS



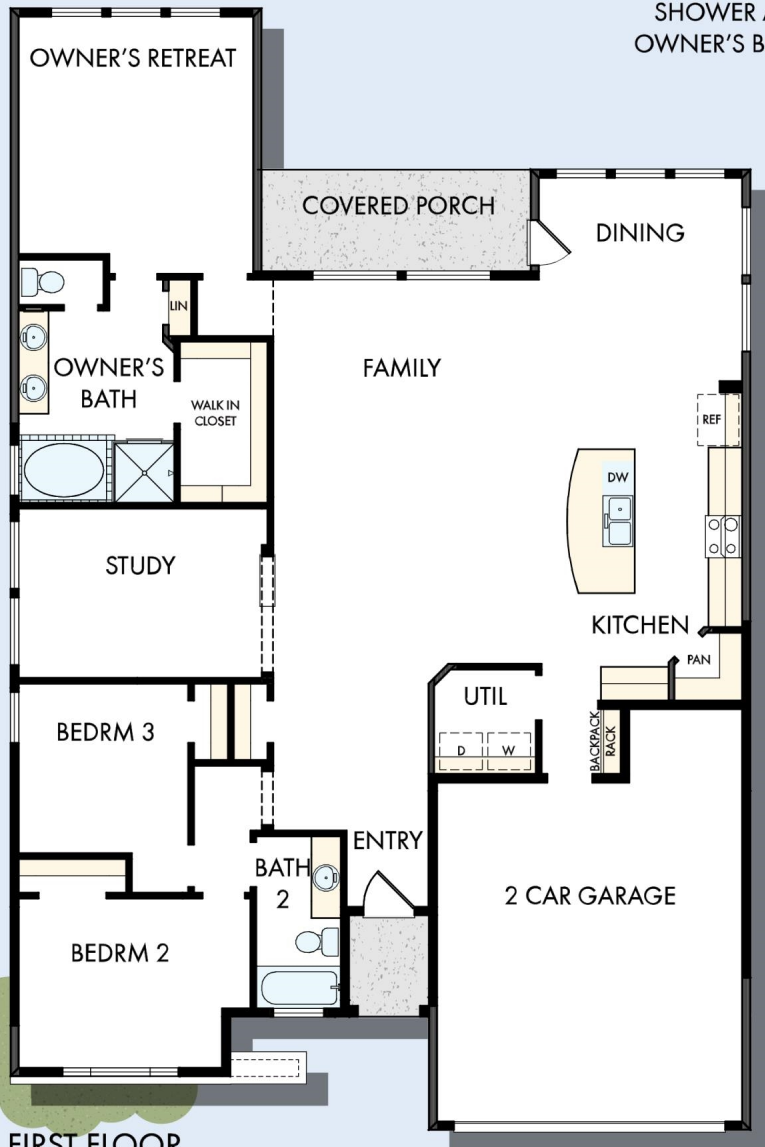
OPTIONAL SUPER
SHOWER AT
OWNER'S BATH



OPTIONAL EXTENDED
COVERED PORCH



OPTIONAL GUEST SUITE WITH
GUEST BATH AT BEDROOM
2 AND 3

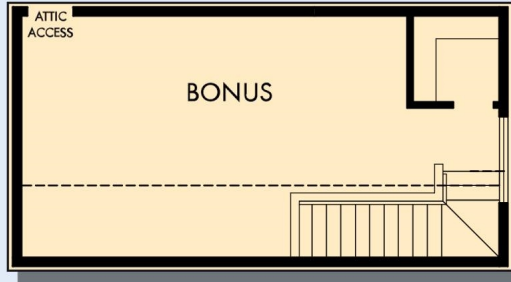


FIRST FLOOR

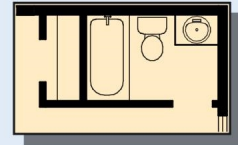
THE ABSHIRE



OPTIONAL HALF
BATH AT OPTIONAL
BONUS



OPTIONAL BONUS



OPTIONAL BATH 3
AT OPTIONAL BONUS

For additional options, please visit DavidWeekleyHomes.com



See a David Weekley Homes Sales Consultant for details.
Prices, plans, dimensions, features, specifications, materials,
and availability of homes or communities are subject to
change without notice or obligation. Illustrations are artist's
depictions only and may differ from completed improvements.
Copyright © 2019 David Weekley Homes - All Rights Reserved.
Austin, TX

DavidWeekleyHomes.com