

THE BRIDGES



Exterior B

2,672 - 2,693 sq. ft.

3 - 5 Bedrooms

2 - 4 Full Baths

1 Half Bath

2 Car Garage



Exterior C

Shane



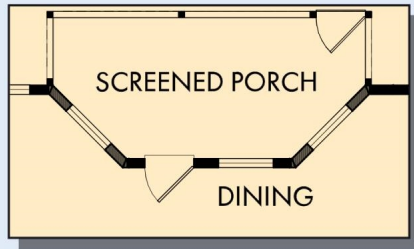
We're living our fairytale thanks to David Weekley

We can't say enough about the level of quality and care we received while building our home. Our builder was with us every step of the way to make sure our every need and desire was being met! The team truly went above and beyond at every turn to give us the home of our dreams! We will definitely recommend David Weekley to anyone looking to build a new home!

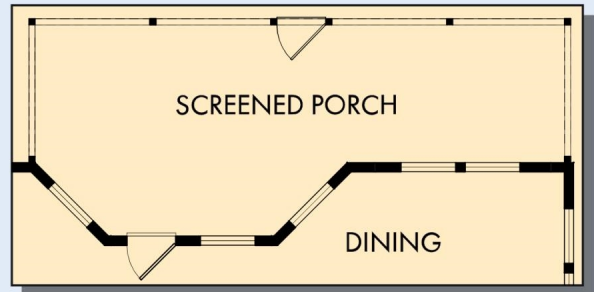
**David Weekley
Homes**

THE BRIDGES

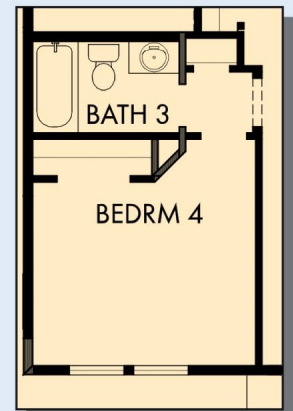
2,672 - 2,693 sq. ft. • 3 - 5 Bedrooms • 2 - 4 Full Baths • 1 Half Bath • 2 Car Garage



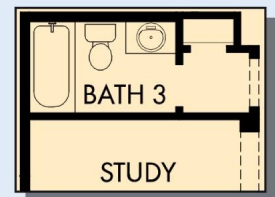
OPTIONAL SCREENED PORCH



OPTIONAL EXTENDED SCREENED PORCH

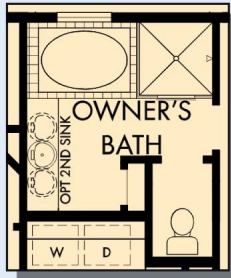


OPTIONAL BEDROOM 4 WITH BATH 3 AT STUDY

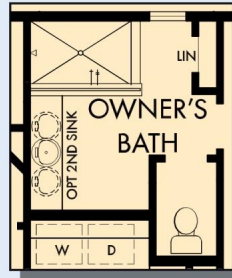


OPTIONAL BATH 3 AT HALLWAY

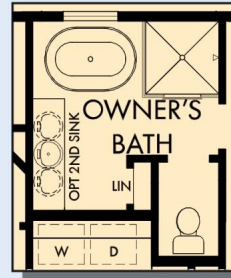
THE BRIDGES



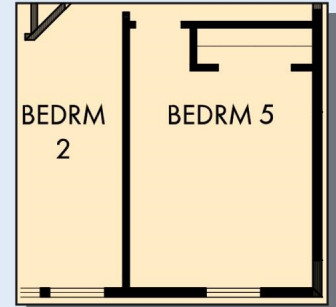
OPTIONAL SEPARATE TUB AND SHOWER AT OWNER'S BATH



OPTIONAL SUPER SHOWER AT OWNER'S BATH



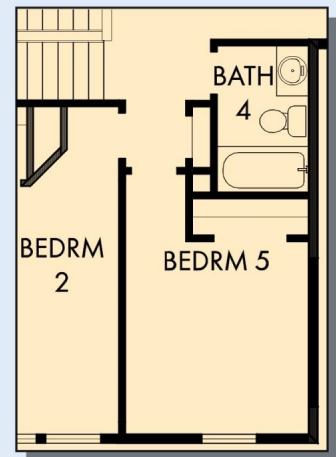
OPTIONAL FREE STANDING TUB WITH SEPARATE SHOWER AT OWNER'S BATH



OPTIONAL BEDROOM 5 AT RETREAT



SECOND FLOOR



OPTIONAL BEDROOM 5 WITH BATH 4 AT RETREAT

For additional options, please visit DavidWeekleyHomes.com

See a David Weekley Homes Sales Consultant for details. Prices, plans, dimensions, features, specifications, materials, and availability of homes or communities are subject to change without notice or obligation. Illustrations are artist's depictions only and may differ from completed improvements. Copyright © 2024 David Weekley Homes - All Rights Reserved. Charleston, SC

DavidWeekleyHomes.com

