

THE FORESTCREST



Exterior A

2,892 - 2,907 sq. ft.

3 - 6 Bedrooms

2 - 5 Full Baths

1 Half Bath

2 Car Garage



Exterior C

Shane



We're living our fairytale thanks to David Weekley

We can't say enough about the level of quality and care we received while building our home. Our builder was with us every step of the way to make sure our every need and desire was being met! The team truly went above and beyond at every turn to give us the home of our dreams! We will definitely recommend David Weekley to anyone looking to build a new home!

**David Weekley
Homes**

THE FORESTCREST

2,892 - 2,907 sq. ft. • 3 - 6 Bedrooms • 2 - 5 Full Baths • 1 Half Bath • 2 Car Garage



7779 in 6820 POR

For additional options, please visit DavidWeekleyHomes.com

9/29/2021

DavidWeekleyHomes.com

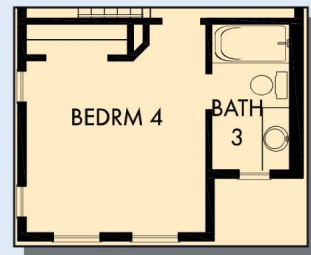
THE FORESTCREST



OPTIONAL SUPER
SHOWER WITH
FULL GLASS
AT OWNER'S BATH



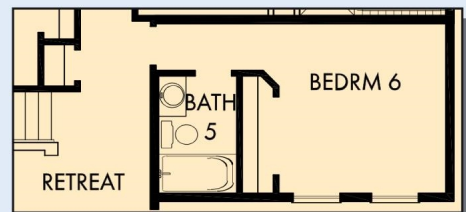
OPTIONAL BEDROOM 4
AT RETREAT



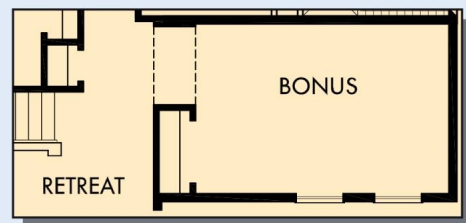
OPTIONAL BEDROOM 4 WITH
BATH 3 AT RETREAT



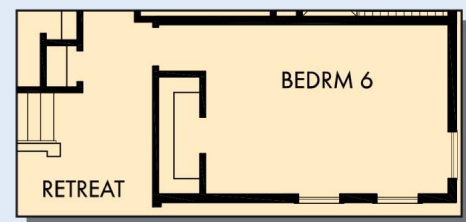
SECOND FLOOR



OPTIONAL BEDROOM 6 WITH BATH 5 AT HALL



BONUS AT HALL



OPTIONAL BEDROOM 6 AT HALL

For additional options, please visit DavidWeekleyHomes.com



See a David Weekley Homes Sales Consultant for details. Prices, plans, dimensions, features, specifications, materials, and availability of homes or communities are subject to change without notice or obligation. Illustrations are artist's depictions only and may differ from completed improvements. Copyright © 2021 David Weekley Homes - All Rights Reserved. POR, OR

DavidWeekleyHomes.com