

THE WILMETTE



8375 CTX - A

Exterior A

2,104 - 2,969 sq. ft.

3 - 5 Bedrooms

2 - 4 Full Baths

0 - 2 Half Baths

2 Car Garage



8375 CTX - B

Exterior B

Greg and Jane



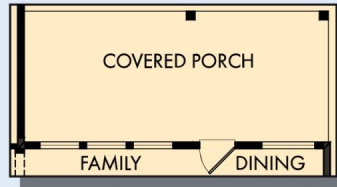
Exceptional service and experience!

We have been fortunate enough to build several new homes and this was by far the best experience that we've encountered. We actually debated whether or not we wanted to go through the home building process again or simply purchase a pre-owned home or a finished new home. So pleased we built! Our Weekley team (sales associate, design consultant and builder) was very professional, courteous, attentive, responsive and pro-active from beginning to end. They've all become our adopted kids! Great overall experience!

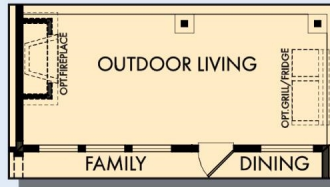
**David Weekley
Homes**

THE WILMETTE

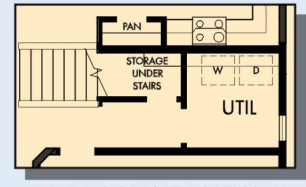
2,104 - 2,969 sq. ft. • 3 - 5 Bedrooms • 2 - 4 Full Baths • 0 - 2 Half Baths • 2 Car Garage



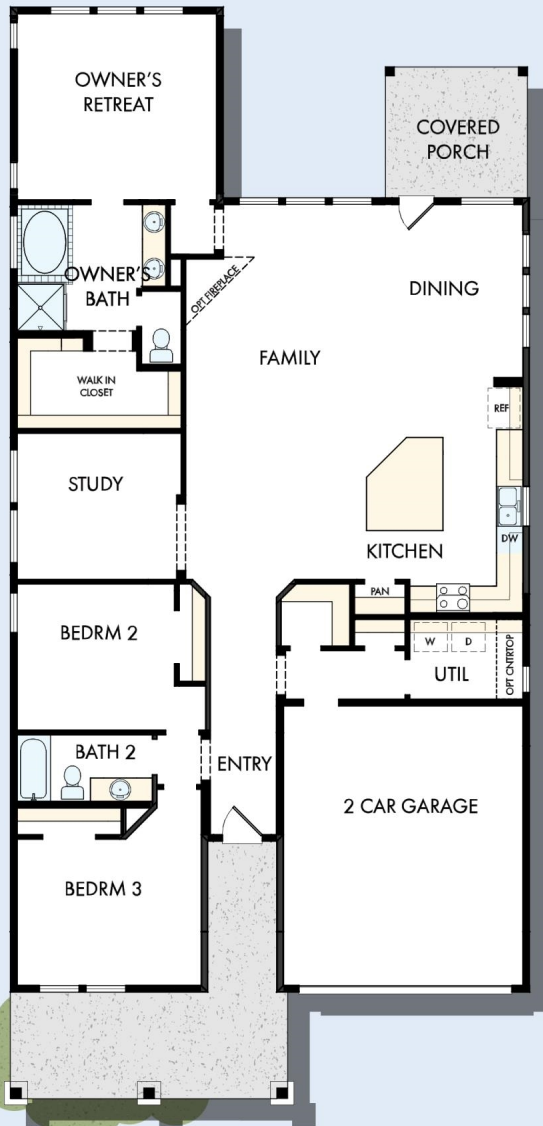
OPTIONAL EXTENDED COVERED PORCH AT DINING



OPTIONAL OUTDOOR LIVING AT DINING



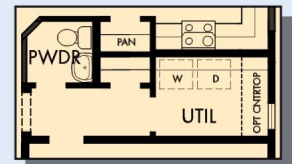
FIRST FLOOR WITH OPTIONAL SECOND FLOOR BONUS



OPTIONAL EXTENDED OWNER'S RETREAT

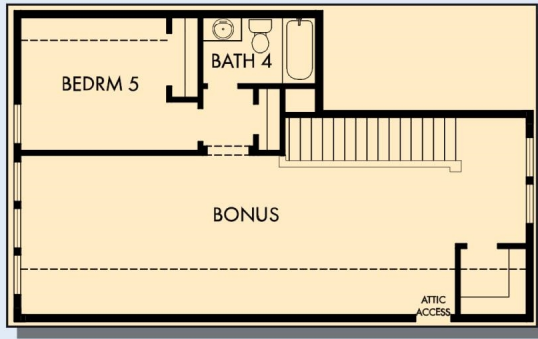


OPTIONAL SUPER SHOWER AT OWNER'S BATH

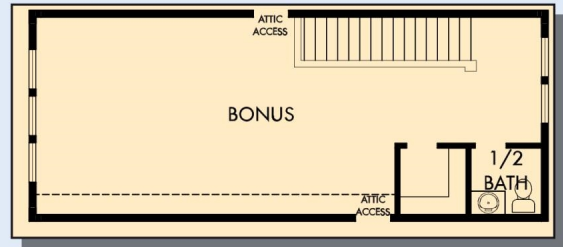


OPTIONAL POWDER BATH AT HALL CLOSET

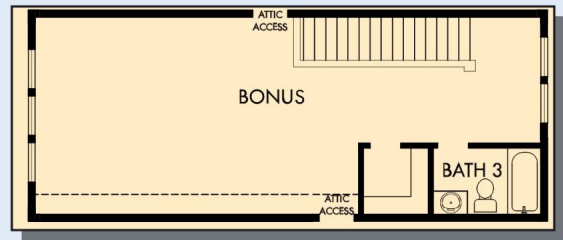
THE WILMETTE



OPTIONAL SECOND FLOOR BONUS WITH BEDROOM 5
AND BATH 4



OPTIONAL SECOND FLOOR BONUS WITH HALF BATH



OPTIONAL SECOND FLOOR BONUS WITH BATH 3

For additional options, please visit DavidWeekleyHomes.com

See a David Weekley Homes Sales Consultant for details.
Prices, plans, dimensions, features, specifications, materials,
and availability of homes or communities are subject to
change without notice or obligation. Illustrations are artist's
depictions only and may differ from completed improvements.
Copyright © 2021 David Weekley Homes - All Rights Reserved.
Austin, TX

DavidWeekleyHomes.com

