

# THE TRAMEL



Exterior A

3,679 - 3,733 sq. ft.

4 Bedrooms

4 Full Baths

2 Car Garage



Exterior B

**Rich C.**



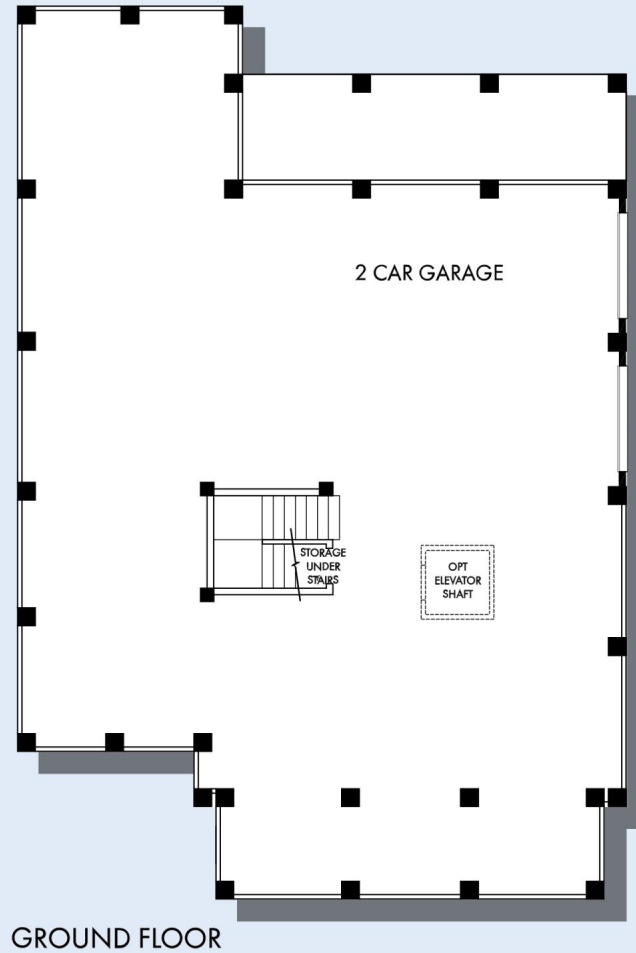
### **Wonderful Experience!**

If there is anything that sets David Weekley apart from other builders it is their customer service. I felt like a member of the family from the first time I walked into the model, to when I received my keys and saw the wonderful housewarming presents that were left for me, up to the present when I see my salesman in the neighborhood. I felt like they really took the time to understand what I was looking for and then came through with my dream home. I would highly recommend David Weekley to anyone looking to buy and/or build a home.

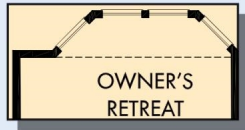
**David Weekley  
Homes**

# THE TRAMEL

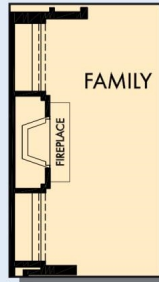
3,679 - 3,733 sq. ft. • 4 Bedrooms • 4 Full Baths • 2 Car Garage



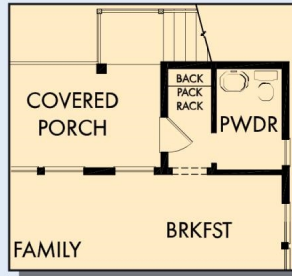
# THE TRAMEL



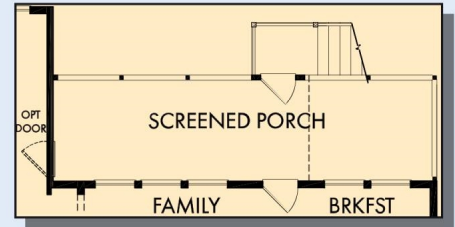
OPTIONAL BAY WINDOW AT OWNER'S RETREAT



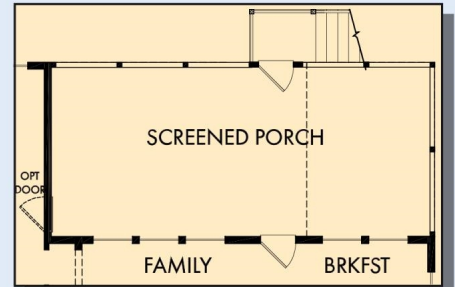
OPTIONAL WALL FIREPLACE AT FAMILY



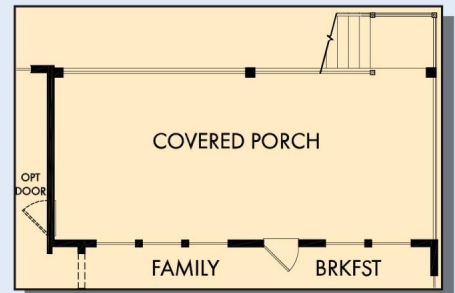
OPTIONAL POWDER BATH AT BREAKFAST



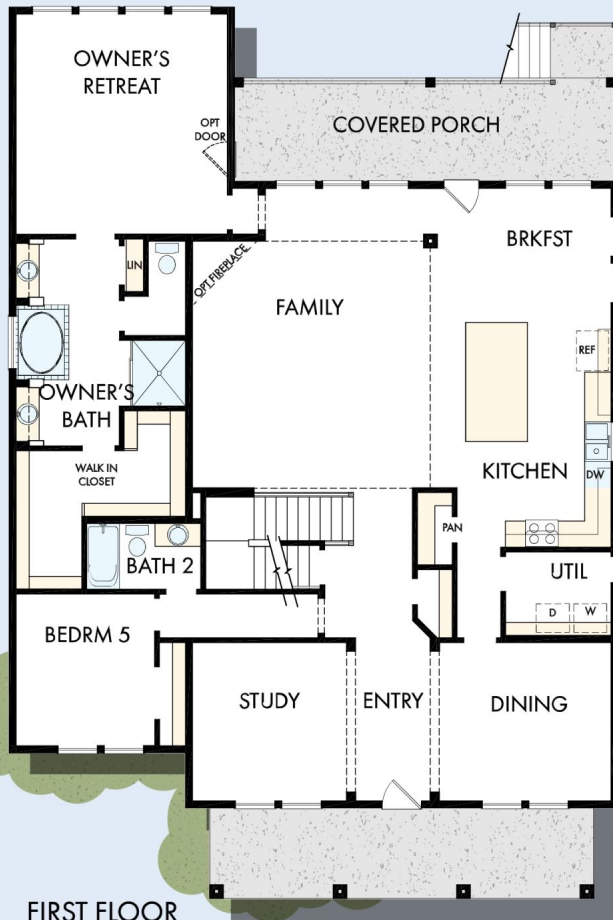
OPTIONAL SCREENED PORCH AT FAMILY AND BREAKFAST



OPTIONAL EXTENDED SCREENED PORCH AT FAMILY AND BREAKFAST



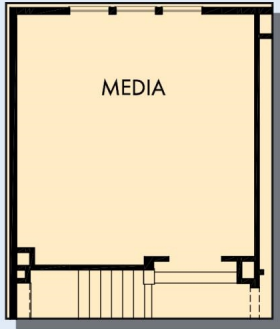
OPTIONAL EXTENDED COVERED PORCH AT FAMILY AND BREAKFAST



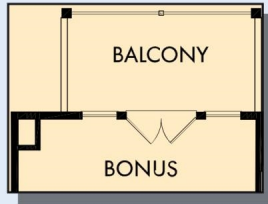
FIRST FLOOR

For additional options, please visit [DavidWeekleyHomes.com](http://DavidWeekleyHomes.com)

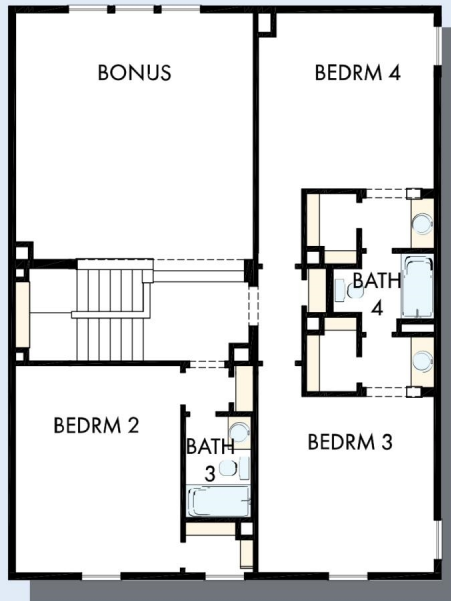
# THE TRAMEL



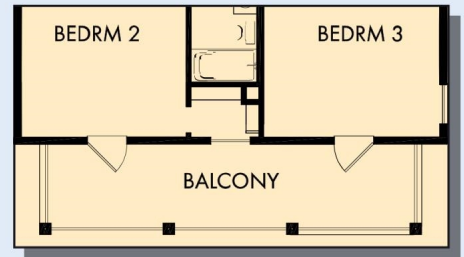
OPTIONAL MEDIA AT  
BONUS



OPTIONAL BALCONY AT  
BONUS



SECOND FLOOR



OPTIONAL DOUBLE PORCH

For additional options, please visit [DavidWeekleyHomes.com](http://DavidWeekleyHomes.com)

See a David Weekley Homes Sales Consultant for details. Prices, plans, dimensions, features, specifications, materials, and availability of homes or communities are subject to change without notice or obligation. Illustrations are artist's depictions only and may differ from completed improvements. Copyright © 2023 David Weekley Homes - All Rights Reserved. Charleston, SC

**DavidWeekleyHomes.com**

