

# THE BISMARK



Exterior A



Exterior B

1,613 - 3,310 sq. ft.

2 - 5 Bedrooms

2 - 3 Full Baths

0 - 1 Half Baths

2 Car Garage

**Crystal W.**



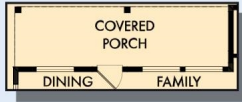
**Welcome Home**

My DWHomes experience has been truly 5-stars! From a floorplan concept, reserving a lot filled with dirt, the homebuilding project, to "Welcome Home", the entire process has been amazing. The team provided regular feedback and were always available to address questions and concerns. I was sold on the quality features. The entire team's availability and service has been exceptional before and after closing. Looking forward to enjoying our new home and neighbors for many years to come!

**David Weekley  
Homes**

# THE BISMARK

1,613 - 3,310 sq. ft. • 2 - 5 Bedrooms • 2 - 3 Full Baths • 0 - 1 Half Baths • 2 Car Garage



OPTIONAL EXTENDED COVERED PORCH AT DINING AND FAMILY



OPTIONAL COVERED PORCH AT DINING



OPTIONAL SUPER SHOWER AT OWNER'S BATH



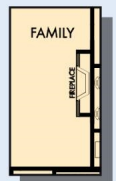
OPTIONAL DROP-IN TUB WITH SEPARATE SHOWER AT OWNER'S BATH



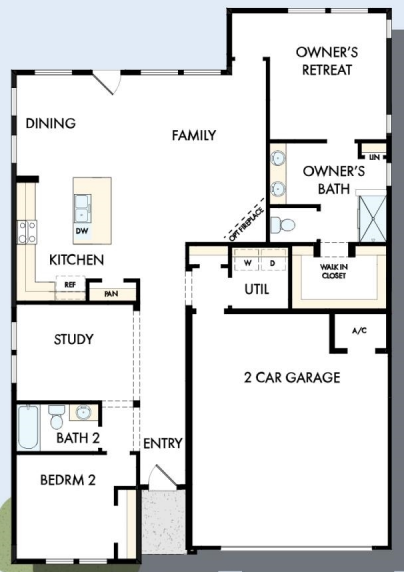
OPTIONAL 3 CAR GARAGE



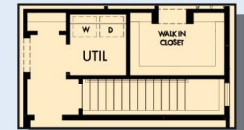
OPTIONAL BEDROOM 3 AT STUDY



OPTIONAL WALL FIREPLACE AT FAMILY



FIRST FLOOR

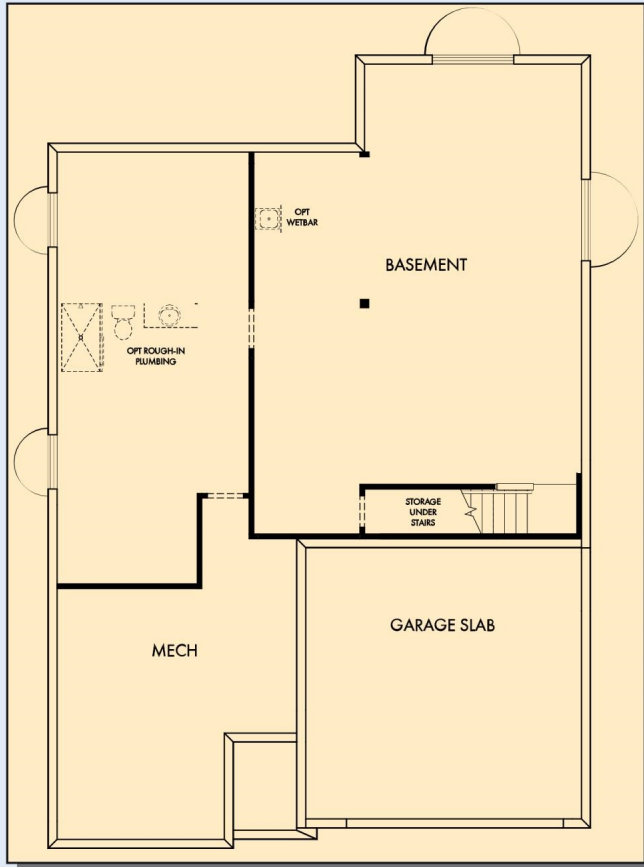


FIRST FLOOR WITH OPTIONAL BASEMENT

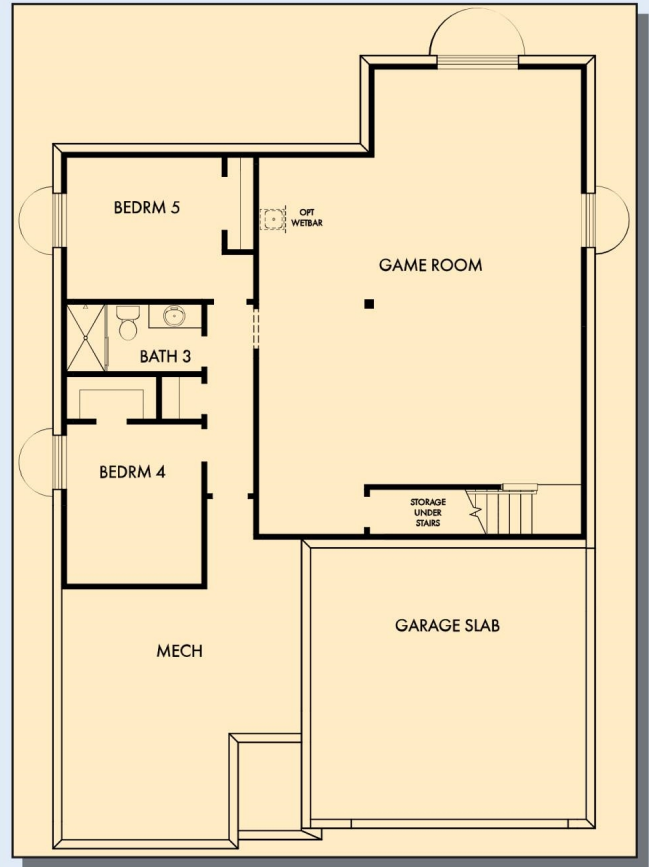


OPTIONAL GUEST SUITE AT BEDROOM 2 AND STUDY

# THE BISMARK



OPTIONAL BASEMENT



OPTIONAL BASEMENT WITH GAME ROOM, BEDROOM 4,5 AND BATH 3



OPTIONAL WET BAR AT GAME ROOM

For additional options, please visit [DavidWeekleyHomes.com](http://DavidWeekleyHomes.com)

See a David Weekley Homes Sales Consultant for details. Prices, plans, dimensions, features, specifications, materials, and availability of homes or communities are subject to change without notice or obligation. Illustrations are artist's depictions only and may differ from completed improvements. Copyright © 2024 David Weekley Homes - All Rights Reserved. Salt Lake City, UT

**DavidWeekleyHomes.com**

