

THE EATON



Exterior A

1,502 - 1,609 sq. ft.

2 - 3 Bedrooms

2 Full Baths

2 Car Garage



Exterior B

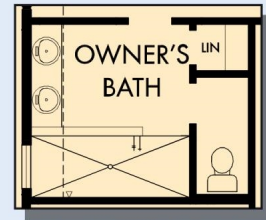


Exterior C

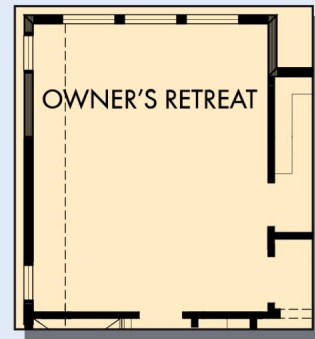
David Weekley
Homes

THE EATON

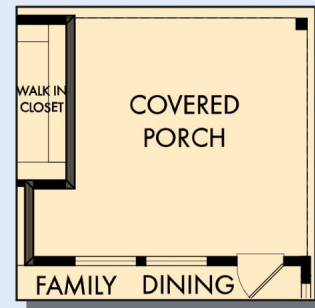
1,502 - 1,609 sq. ft. • 2 - 3 Bedrooms • 2 Full Baths • 2 Car Garage



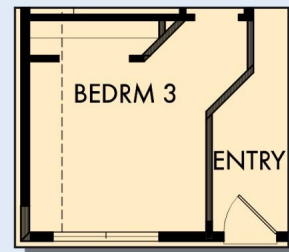
OPTIONAL SUPER
SHOWER AT
OWNER'S BATH



OPTIONAL EXTENDED
OWNER'S RETREAT



OPTIONAL EXTENDED
COVERED PORCH AT FAMILY
AND DINING



OPTIONAL BEDROOM 3
AT STUDY

B576 in 2206 AUS

For additional options, please visit DavidWeekleyHomes.com

11/28/2022



See a David Weekley Homes Sales Consultant for details. Prices, plans, dimensions, features, specifications, materials, and availability of homes or communities are subject to change without notice or obligation. Illustrations are artist's depictions only and may differ from completed improvements. Copyright © 2022 David Weekley Homes - All Rights Reserved. Austin, TX

DavidWeekleyHomes.com