

# THE WHITCOMB



Exterior A



Exterior B

1,846 - 2,619 sq. ft.

3 - 4 Bedrooms

3 - 4 Full Baths

1 Half Bath

2 Car Garage

**Gigi and Papa**



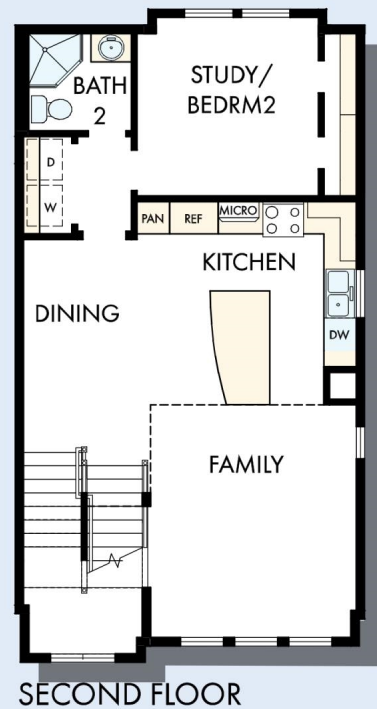
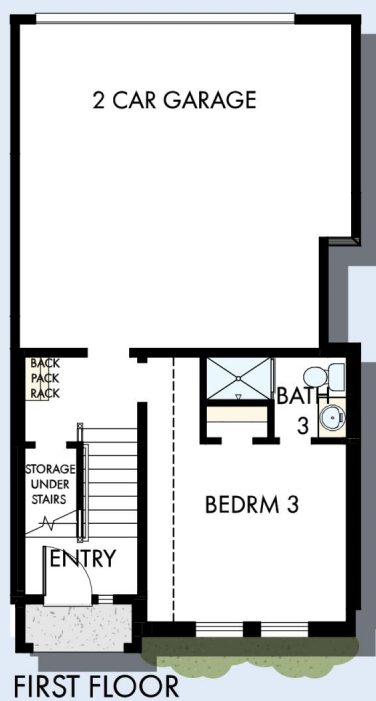
## **THE BESTest - Better than all the rest!**

What an awesome and personal family-oriented company! From touring model homes to selecting "THE ONE" just for us, the experience was delightful and amazing! The entire David Weekley team has been exceptionally wonderful and always available to address any issues we encountered. We have been amazed and impressed by the "Service after the Sale" approach by the David Weekley staff. We would recommend David Weekley homes to anyone. We feel like we are an important member of the Weekley family!

**CENTRAL LIVING**  
*by* **David Weekley Homes**

# THE WHITCOMB

1,846 - 2,619 sq. ft. • 3 - 4 Bedrooms • 3 - 4 Full Baths • 1 Half Bath • 2 Car Garage



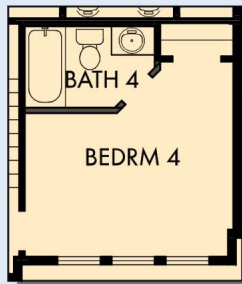
9714 in 4666 ATL

For additional options, please visit [DavidWeekleyHomes.com](http://DavidWeekleyHomes.com)

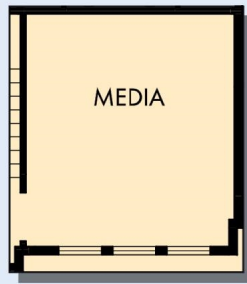
11/17/2020

CENTRAL LIVING  
by David Weekley Homes

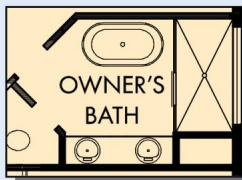
# THE WHITCOMB



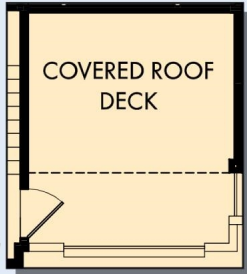
OPTIONAL BEDROOM 4 AND BATH 4 AT OPEN



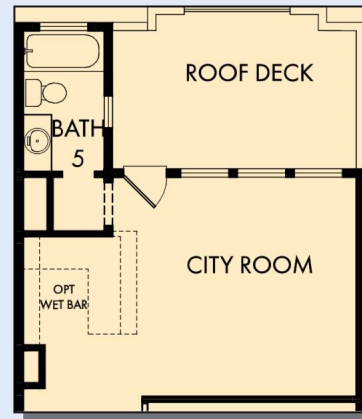
OPTIONAL MEDIA AT OPEN



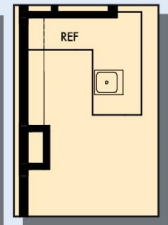
OPTIONAL FREE STANDING TUB AT OWNER'S BATH



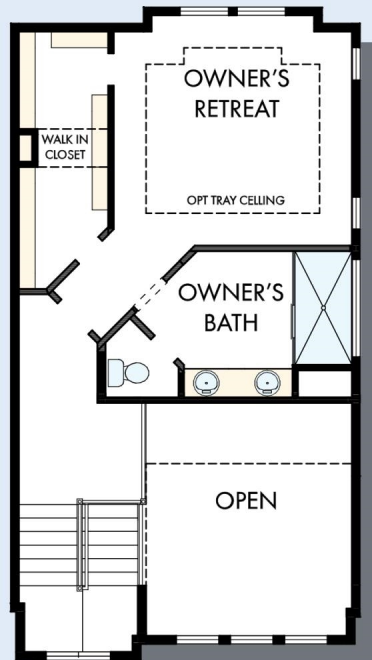
OPTIONAL COVERED ROOF DECK AT OPEN



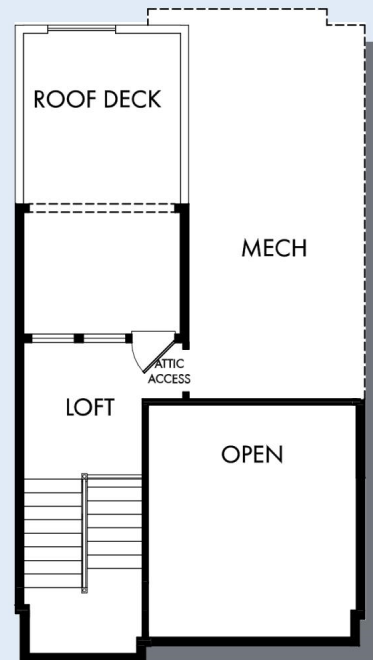
OPTIONAL CITY ROOM WITH BATH 5 AT MECH



OPTIONAL WET BAR AT CITY ROOM



THIRD FLOOR



FOURTH FLOOR

For additional options, please visit [DavidWeekleyHomes.com](http://DavidWeekleyHomes.com)



See a David Weekley Homes Sales Consultant for details. Prices, plans, dimensions, features, specifications, materials, and availability of homes or communities are subject to change without notice or obligation. Illustrations are artist's depictions only and may differ from completed improvements. Copyright © 2020 David Weekley Homes - All Rights Reserved. Atlanta, GA

CENTRAL LIVING  
by David Weekley Homes