

# THE CLIPPARD



Exterior C



Exterior E

2,192 - 2,193 sq. ft.

3 - 4 Bedrooms

2 - 4 Full Baths

0 - 2 Half Baths

2 Car Garage

## Chelsea



### Incredible Experience, Incredible Home!

We trusted the team from Day 1 and couldn't have asked for a better experience. The attention to detail was fantastic, and we felt as if the DWH team had a personal interest in the success of our home. The process was well defined and every team member set very clear expectations. We love every inch of our home, and we'd definitely recommend DWH!

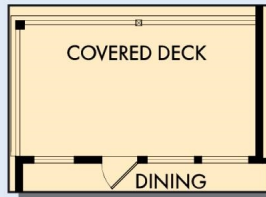
David Weekley  
Homes

# THE CLIPPARD

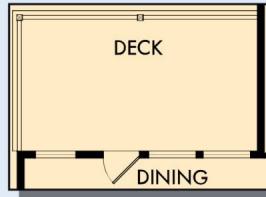
2,192 - 2,193 sq. ft. • 3 - 4 Bedrooms • 2 - 4 Full Baths • 0 - 2 Half Baths • 2 Car Garage



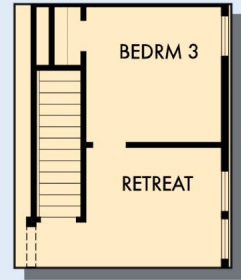
OPTIONAL COVERED PORCH AT DINING



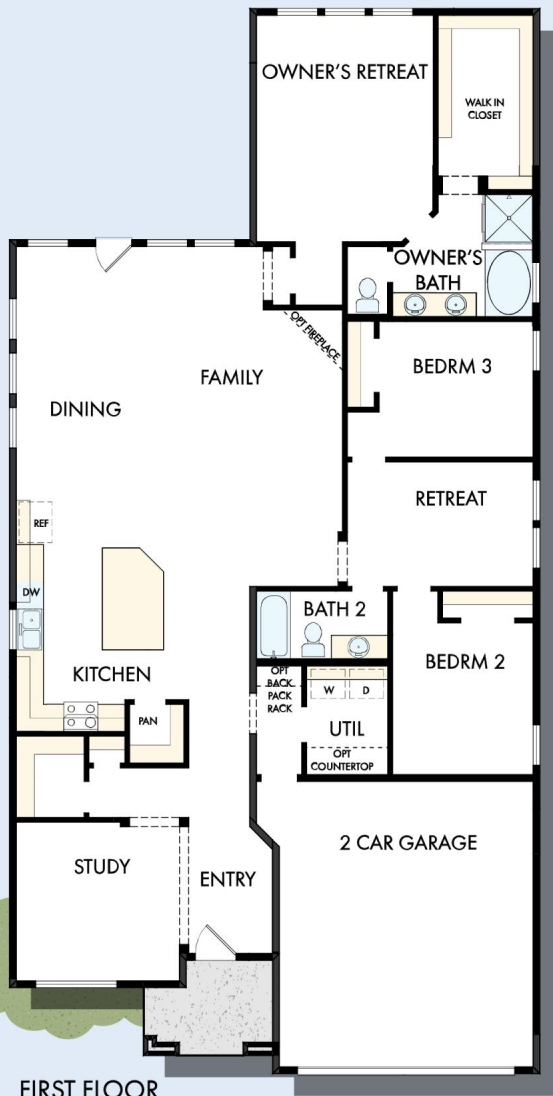
OPTIONAL COVERED DECK AT DINING



DECK WITH OPTIONAL BASEMENT



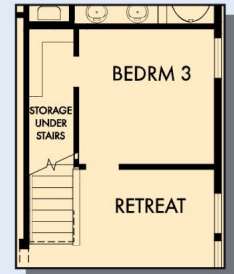
FIRST FLOOR WITH OPTIONAL BASEMENT



FIRST FLOOR



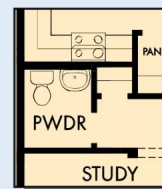
OPTIONAL EXTENDED BEDROOM 2 AND 3



FIRST FLOOR WITH OPTIONAL SECOND FLOOR BONUS



OPTIONAL SUPER SHOWER AT OWNER'S BATH

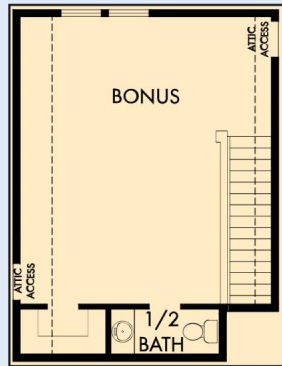


OPTIONAL POWDER BATH AT HALL WAY

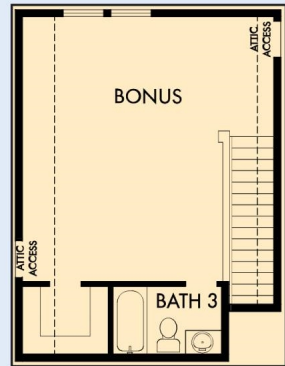


OPTIONAL FREE STANDING TUB WITH SEPARATE SHOWER AT OWNER'S BATH

# THE CLIPPARD



OPTIONAL SECOND FLOOR  
BONUS WITH HALF BATH

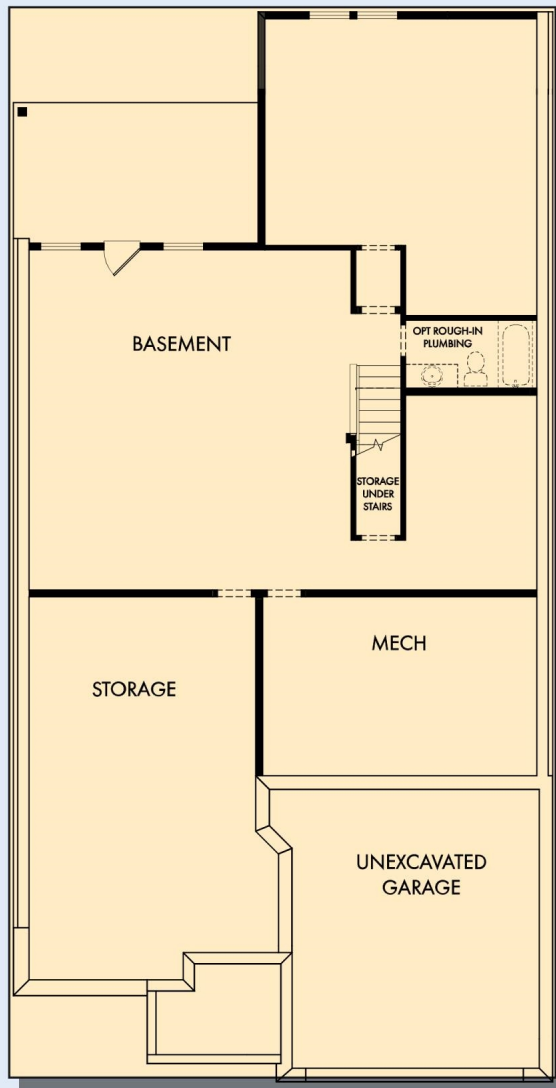


OPTIONAL SECOND FLOOR  
BONUS WITH BATH 3

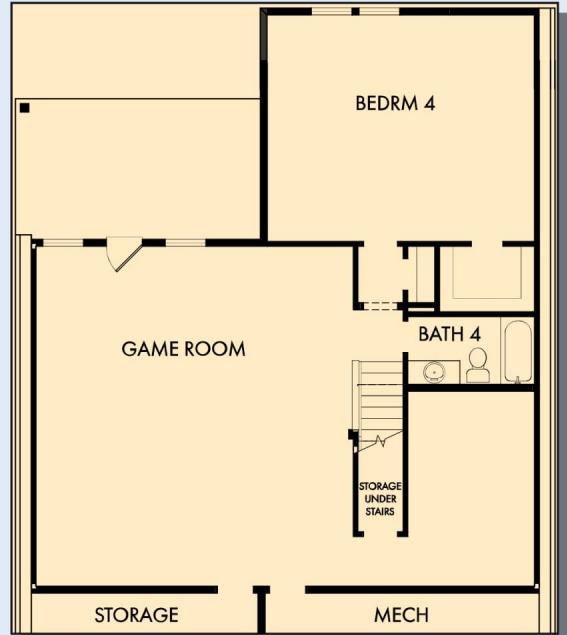
For additional options, please visit [DavidWeekleyHomes.com](http://DavidWeekleyHomes.com)

**DavidWeekleyHomes.com**

# THE CLIPPARD



OPTIONAL BASEMENT



OPTIONAL GAME ROOM WITH BEDROOM 4 AND BATH 4 AT BASEMENT

For additional options, please visit [DavidWeekleyHomes.com](http://DavidWeekleyHomes.com)

See a David Weekley Homes Sales Consultant for details. Prices, plans, dimensions, features, specifications, materials, and availability of homes or communities are subject to change without notice or obligation. Illustrations are artist's depictions only and may differ from completed improvements. Copyright © 2024 David Weekley Homes - All Rights Reserved. Nashville, TN

**DavidWeekleyHomes.com**

