

THE ASHLEIGH



6283 SAN - E

Exterior E

2,275 - 2,276 sq. ft.

3 Bedrooms

2 Full Baths

0 - 1 Half Baths

2 - 3 Car Garage



6283SAN-F

Exterior F

Crystal W.



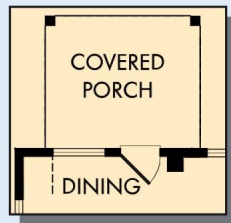
Welcome Home

My DWHomes experience has been truly 5-stars! From a floorplan concept, reserving a lot filled with dirt, the homebuilding project, to "Welcome Home", the entire process has been amazing. The team provided regular feedback and were always available to address questions and concerns. I was sold on the quality features. The entire team's availability and service has been exceptional before and after closing. Looking forward to enjoying our new home and neighbors for many years to come!

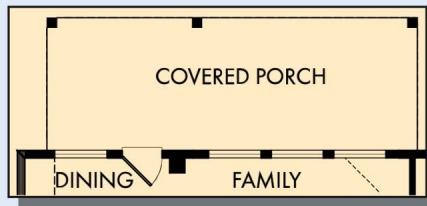
**David Weekley
Homes**

THE ASHLEIGH

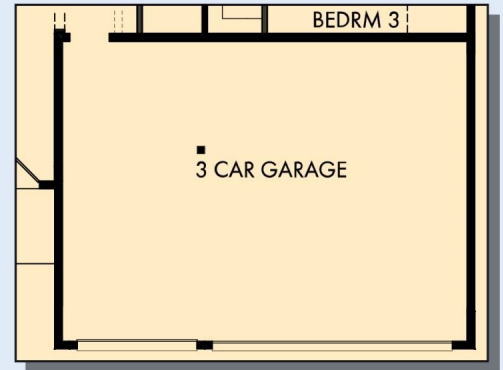
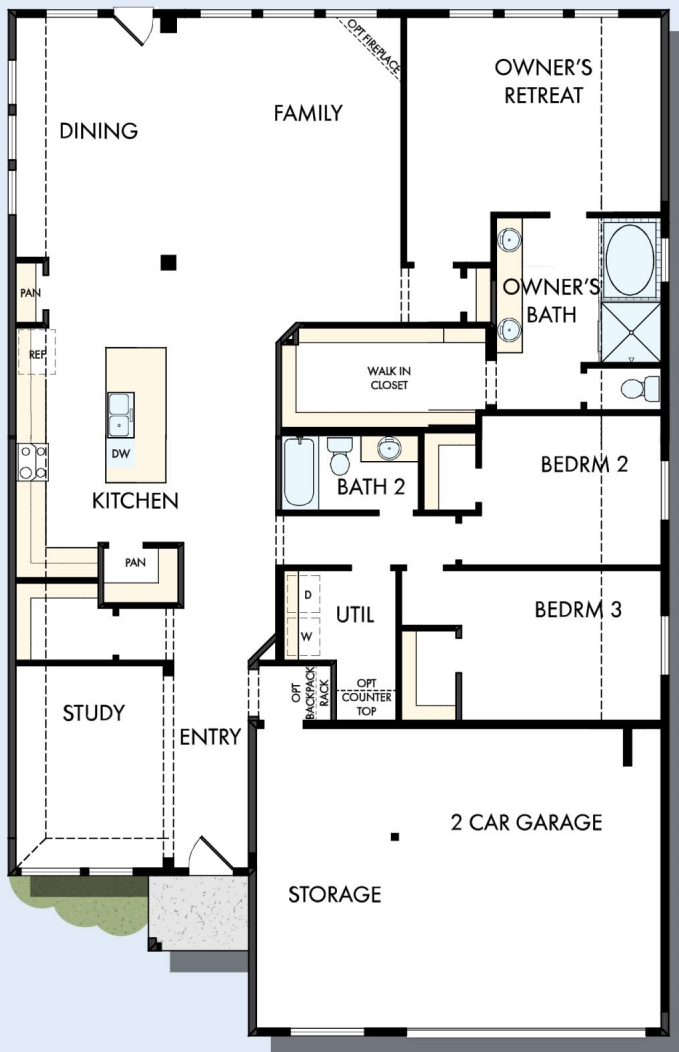
2,275 - 2,276 sq. ft. • 3 Bedrooms • 2 Full Baths • 0 - 1 Half Baths • 2 - 3 Car Garage



OPTIONAL COVERED PORCH AT DINING



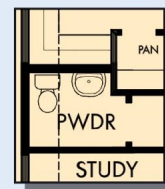
OPTIONAL EXTENDED COVERED PORCH AT DINING AND FAMILY



OPTIONAL 3 CAR GARAGE



OPTIONAL SUPER SHOWER AT OWNER'S BATH



OPTIONAL POWDER BATH AT HALL CLOSET



OPTIONAL SHOWER AT OWNER'S BATH

6283 in 2344 SAN

For additional options, please visit DavidWeekleyHomes.com

1/19/2021



See a David Weekley Homes Sales Consultant for details. Prices, plans, dimensions, features, specifications, materials, and availability of homes or communities are subject to change without notice or obligation. Illustrations are artist's depictions only and may differ from completed improvements. Copyright © 2021 David Weekley Homes - All Rights Reserved. San Antonio, TX

DavidWeekleyHomes.com