

THE RYMER



6235 SAN - D

Exterior D

2,812 - 3,398 sq. ft.

4 Bedrooms

3 Full Baths

2 - 3 Car Garage



6235 SAN - E

Exterior E

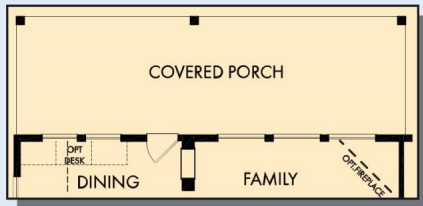


Exterior G

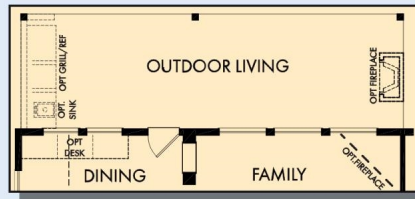
David Weekley
Homes

THE RYMER

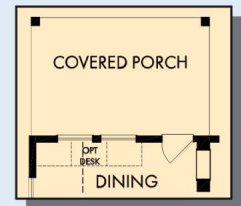
2,812 - 3,398 sq. ft. • 4 Bedrooms • 3 Full Baths • 2 - 3 Car Garage



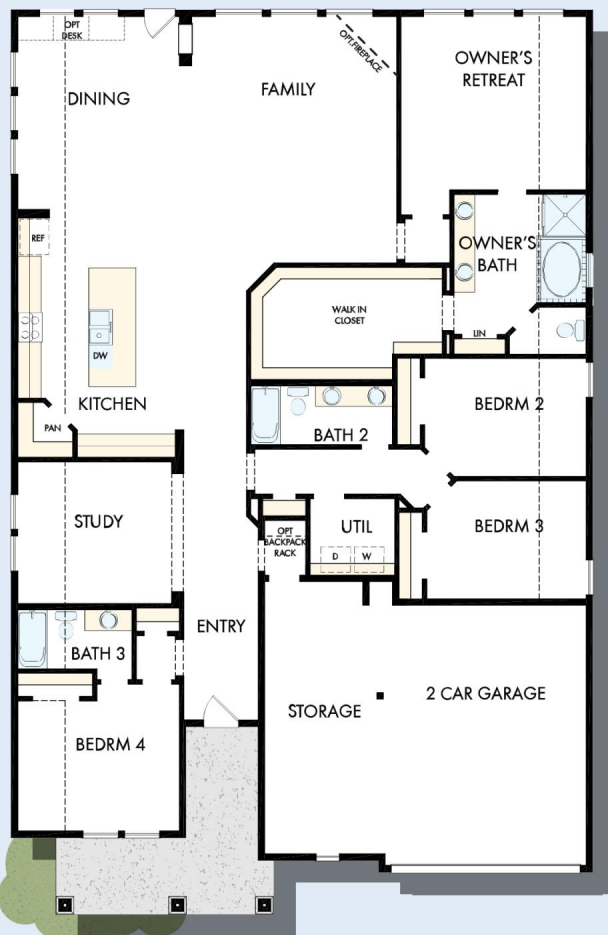
OPTIONAL EXTENDED COVERED PORCH
AT DINING AND FAMILY



OPTIONAL OUTDOOR LIVING
AT DINING AND FAMILY



OPTIONAL COVERED PORCH
AT DINING



FIRST FLOOR



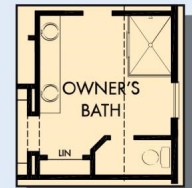
OPTIONAL EXTENDED
OWNER'S RETREAT



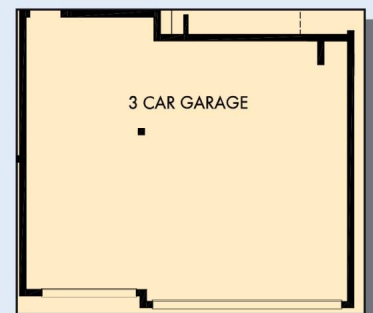
FIRST FLOOR WITH OPTIONAL
SECOND FLOOR BONUS



OPTIONAL SUPER
SHOWER AT
OWNER'S BATH

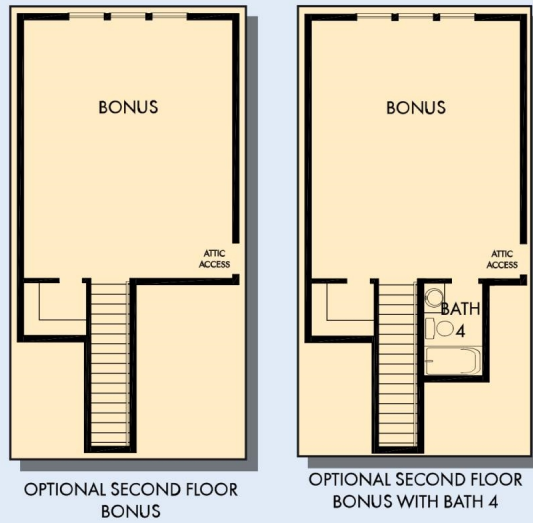


OPTIONAL SHOWER
AT OWNER'S BATH



OPTIONAL 3 CAR GARAGE

THE RYMER



For additional options, please visit DavidWeekleyHomes.com



See a David Weekley Homes Sales Consultant for details. Prices, plans, dimensions, features, specifications, materials, and availability of homes or communities are subject to change without notice or obligation. Illustrations are artist's depictions only and may differ from completed improvements. Copyright © 2022 David Weekley Homes - All Rights Reserved. San Antonio, TX

DavidWeekleyHomes.com