

THE SEVILLE



6286 SAN - E

Exterior E

2,804 - 2,808 sq. ft.

4 - 5 Bedrooms

3 - 4 Full Baths

2 Car Garage



6286 SAN - F

Exterior F

Gigi and Papa



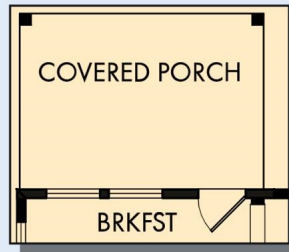
THE BESTest - Better than all the rest!

What an awesome and personal family-oriented company! From touring model homes to selecting "THE ONE" just for us, the experience was delightful and amazing! The entire David Weekley team has been exceptionally wonderful and always available to address any issues we encountered. We have been amazed and impressed by the "Service after the Sale" approach by the David Weekley staff. We would recommend David Weekley homes to anyone. We feel like we are an important member of the Weekley family!

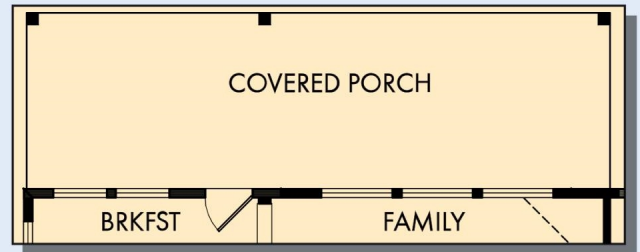
**David Weekley
Homes**

THE SEVILLE

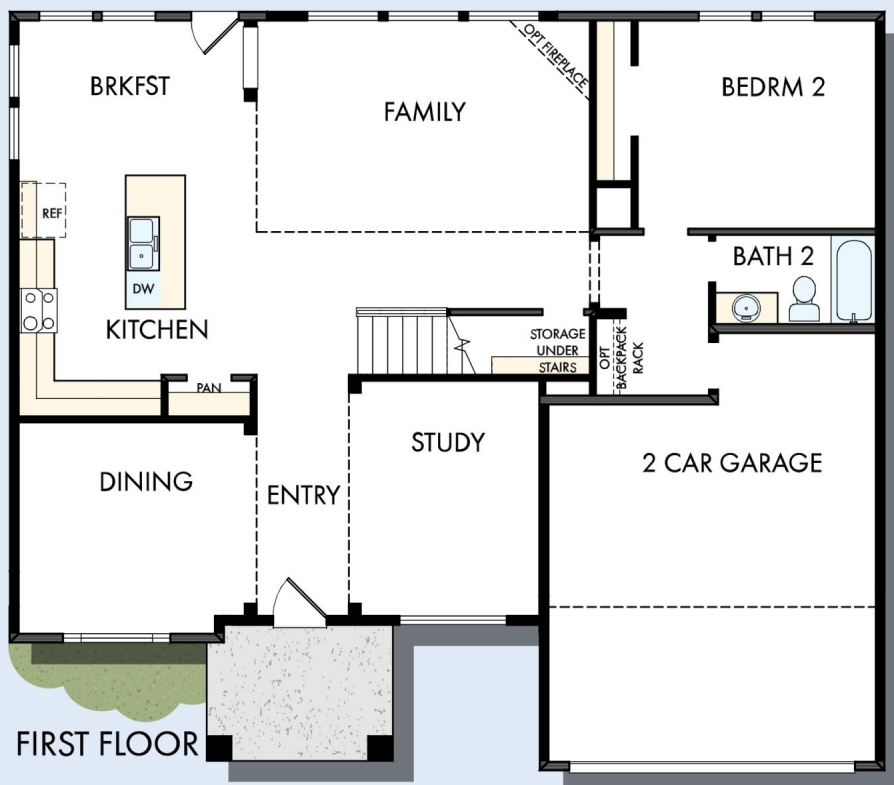
2,804 - 2,808 sq. ft. • 4 - 5 Bedrooms • 3 - 4 Full Baths • 2 Car Garage



OPTIONAL COVERED PORCH
AT BRAKFAST



OPTIONAL EXTENDED COVERED PORCH
AT BREAKFAST AND FAMILY



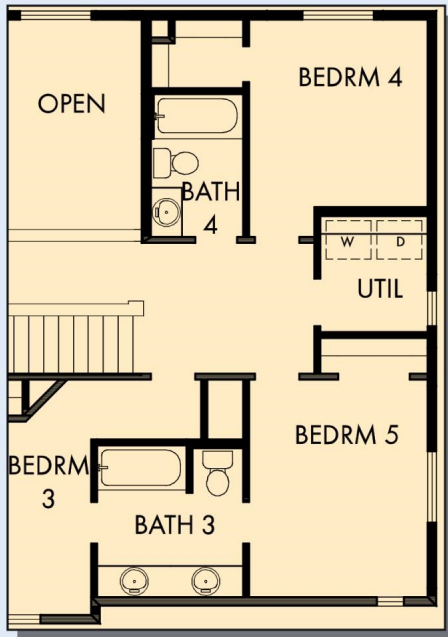
6286 in 2344 SAN

For additional options, please visit DavidWeekleyHomes.com

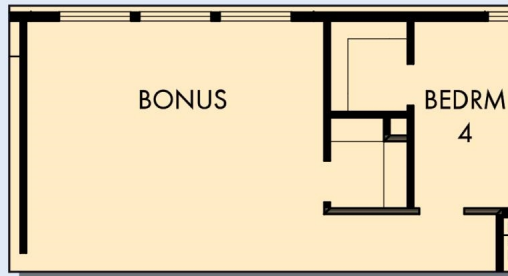
3/31/2020

DavidWeekleyHomes.com

THE SEVILLE



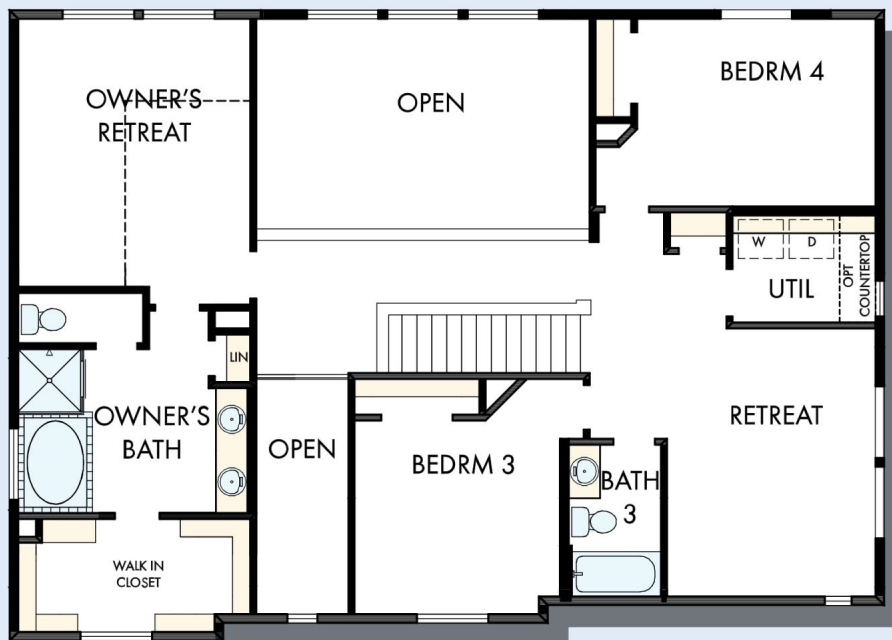
OPTIONAL BEDROOM 5 AND BATH 4
AT RETREAT



OPTIONAL BONUS AT OPEN AREA



OPTIONAL
SUPER SHOWER
AT OWNER'S BATH



SECOND FLOOR

For additional options, please visit DavidWeekleyHomes.com

DavidWeekleyHomes.com

See a David Weekley Homes Sales Consultant for details.
Prices, plans, dimensions, features, specifications, materials,
and availability of homes or communities are subject to
change without notice or obligation. Illustrations are artist's
depictions only and may differ from completed improvements.
Copyright © 2020 David Weekley Homes - All Rights Reserved.
San Antonio, TX

