

THE WOODLEAF



Exterior E

2,022 - 2,043 sq. ft.

3 - 5 Bedrooms

2 - 3 Full Baths

0 - 1 Half Baths

2 Car Garage



Exterior F

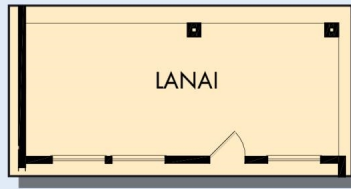


Exterior G

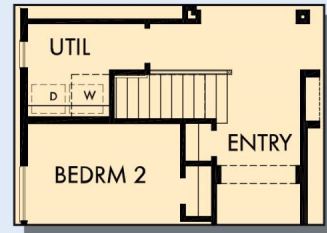
David Weekley
Homes

THE WOODLEAF

2,022 - 2,043 sq. ft. • 3 - 5 Bedrooms • 2 - 3 Full Baths • 0 - 1 Half Baths • 2 Car Garage



OPTIONAL EXTENDED LANAI
AT DINING AND FAMILY



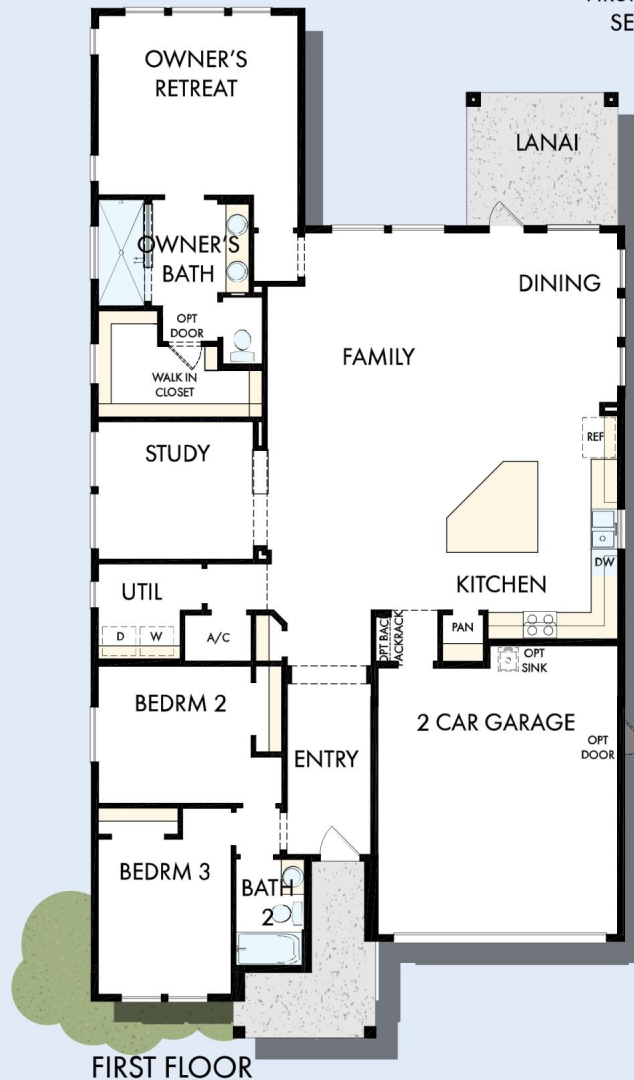
FIRST FLOOR WITH OPTIONAL
SECOND FLOOR BONUS



OPTIONAL BEDROOM
4 AT STUDY

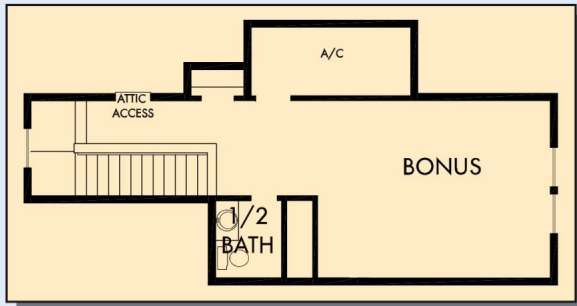


OPTIONAL SLIP IN TUB
WITH SEPARATE
SHOWER AT
OWNER'S BATH

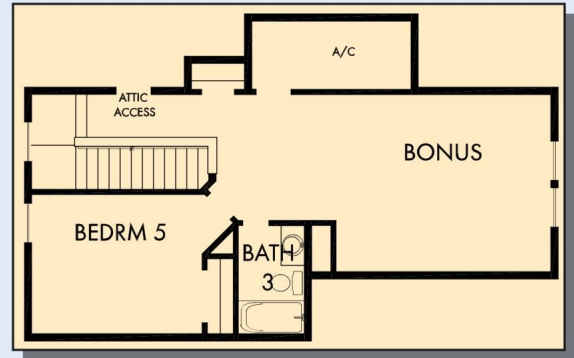


FIRST FLOOR

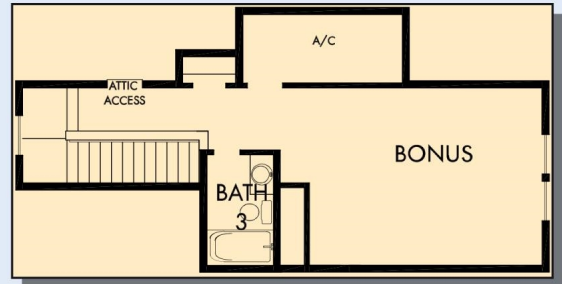
THE WOODLEAF



OPTIONAL SECOND FLOOR BONUS WITH HALF BATH



OPTIONAL SECOND FLOOR BONUS WITH
BEDROOM 5 AND BATH 3



OPTIONAL SECOND FLOOR BONUS WITH BATH 3

For additional options, please visit DavidWeekleyHomes.com



See a David Weekley Homes Sales Consultant for details.
Prices, plans, dimensions, features, specifications, materials,
and availability of homes or communities are subject to
change without notice or obligation. Illustrations are artist's
depictions only and may differ from completed improvements.
Copyright © 2021 David Weekley Homes - All Rights Reserved.
Jacksonville, FL

DavidWeekleyHomes.com