

THE BROMLEY



Exterior A



Exterior B

2,299 - 4,128 sq. ft.

3 - 4 Bedrooms

2 - 3 Full Baths

0 - 1 Half Baths

3 - 4 Car Garage

Greg and Jane



Exceptional service and experience!

We have been fortunate enough to build several new homes and this was by far the best experience that we've encountered. We actually debated whether or not we wanted to go through the home building process again or simply purchase a pre-owned home or a finished new home. So pleased we built! Our Weekley team (sales associate, design consultant and builder) was very professional, courteous, attentive, responsive and pro-active from beginning to end. They've all become our adopted kids! Great overall experience!

**David Weekley
Homes**

THE BROMLEY

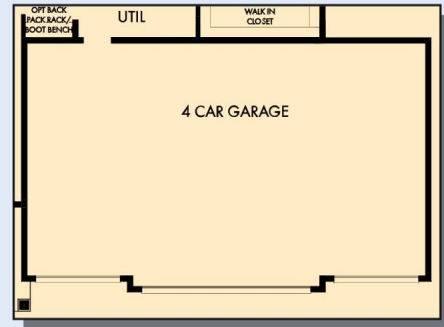
2,299 - 4,128 sq. ft. • 3 - 4 Bedrooms • 2 - 3 Full Baths • 0 - 1 Half Baths • 3 - 4 Car Garage



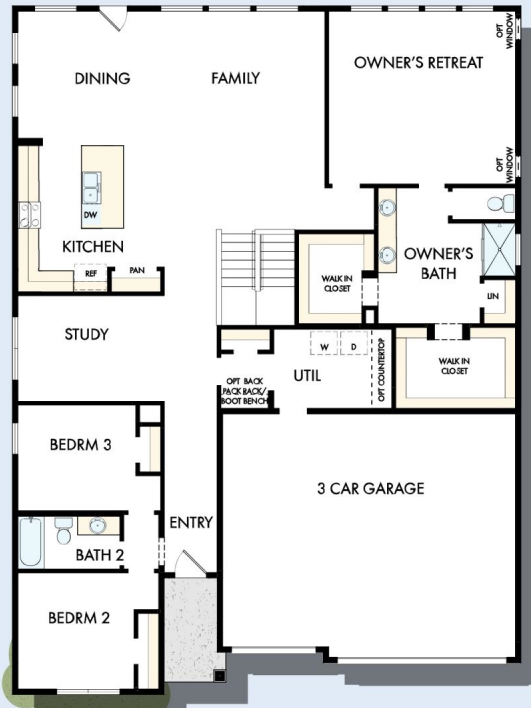
OPTIONAL FREE
STANDING TUB WITH
SEPARATE SHOWER
AT OWNER'S BATH



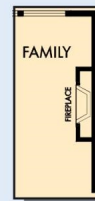
OPTIONAL SUPER
SHOWER AT
OWNER'S BATH



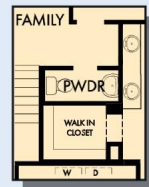
OPTIONAL 4 CAR GARAGE



FIRST FLOOR



OPTIONAL WALL
FIREPLACE AT FAMILY

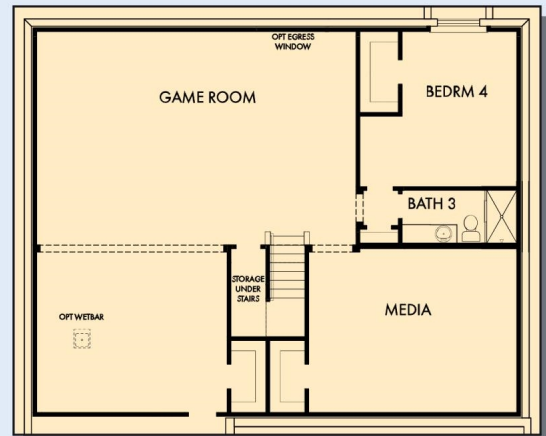
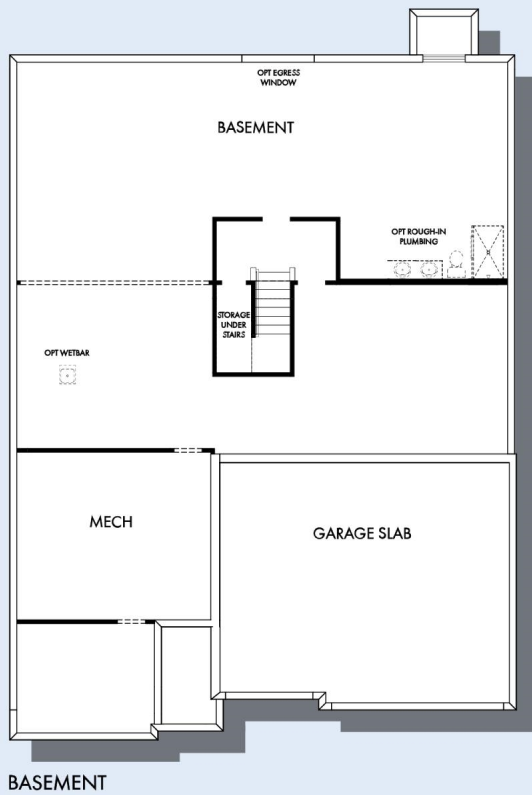


OPTIONAL POWDER
BATH
AT HALL WAY



OPTIONAL GUEST SUITE
AT BEDROOM 2 AND 3

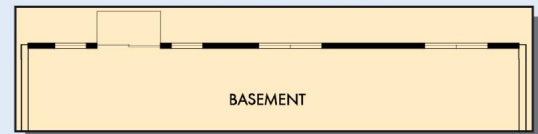
THE BROMLEY



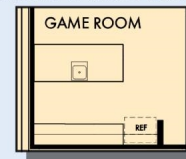
OPTIONAL GAME ROOM WITH MEDIA, BEDROOM 4 AND BATH 3 AT BASEMENT



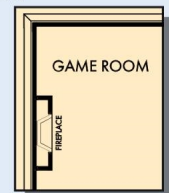
OPTIONAL DAYLIGHT AT BASEMENT



OPTIONAL WALKOUT AT BASEMENT



OPTIONAL WET BAR AT GAME ROOM



OPTIONAL WALL FIREPLACE AT GAME ROOM

For additional options, please visit DavidWeekleyHomes.com

See a David Weekley Homes Sales Consultant for details. Prices, plans, dimensions, features, specifications, materials, and availability of homes or communities are subject to change without notice or obligation. Illustrations are artist's depictions only and may differ from completed improvements. Copyright © 2024 David Weekley Homes - All Rights Reserved. Minneapolis/St. Paul, MN

DavidWeekleyHomes.com

