

THE SWEETEA



Exterior A

2,524 sq. ft.

4 Bedrooms

2 Full Baths

1 Half Bath

2 Car Garage



Exterior B

Perez Family



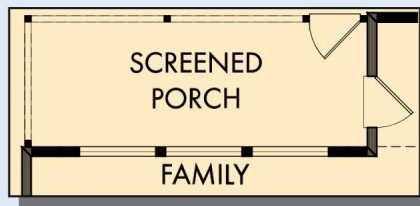
Best Homebuying Experience Ever

We have had several homes built in the past by several homebuilders. Our experience with David Weekley was the best we have ever had. The attention to detail and the customer service were exceptional. Both our sales person and Project Manager kept us well informed and treated us like family. Thanks David Weekley

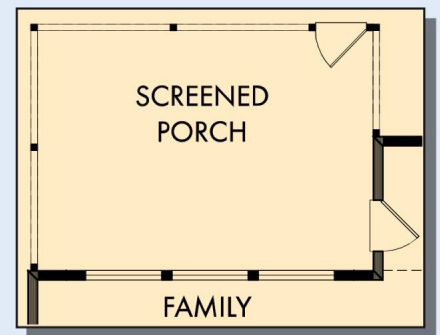
David Weekley
Homes

THE SWEETEA

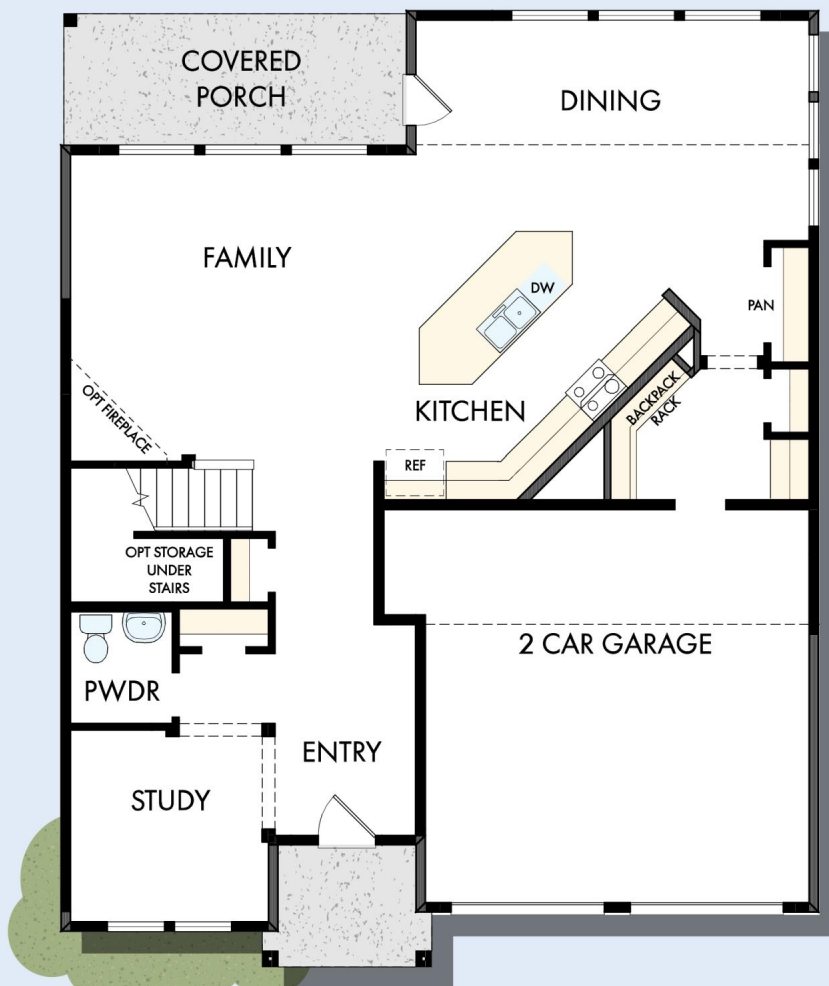
2,524 sq. ft. • 4 Bedrooms • 2 Full Baths • 1 Half Bath • 2 Car Garage



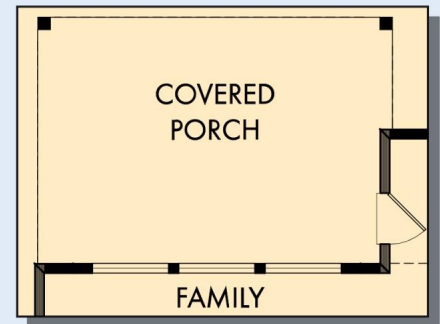
OPTIONAL SCREENED PORCH
AT FAMILY



OPTIONAL EXTENDED SCREENED
PORCH AT FAMILY



FIRST FLOOR



OPTIONAL EXTENDED COVERED
PORCH AT FAMILY

THE SWEETEA



OPTIONAL DROP IN TUB
WITH SEPARATE SHOWER
AT OWNER'S BATH



OPTIONAL SUPER SHOWER
AT OWNER'S BATH



SECOND FLOOR

For additional options, please visit DavidWeekleyHomes.com



See a David Weekley Homes Sales Consultant for details. Prices, plans, dimensions, features, specifications, materials, and availability of homes or communities are subject to change without notice or obligation. Illustrations are artist's depictions only and may differ from completed improvements. Copyright © 2022 David Weekley Homes - All Rights Reserved. Charleston, SC

DavidWeekleyHomes.com