

# THE BRIGHTMAN



Exterior D

2,308 - 2,310 sq. ft.

3 - 4 Bedrooms

2 - 4 Full Baths

2 - 3 Car Garage



Exterior E

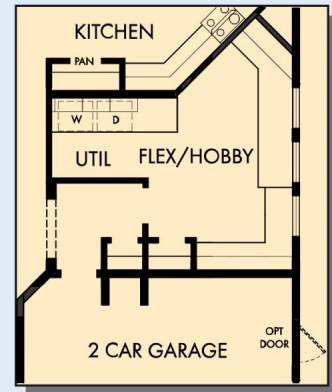
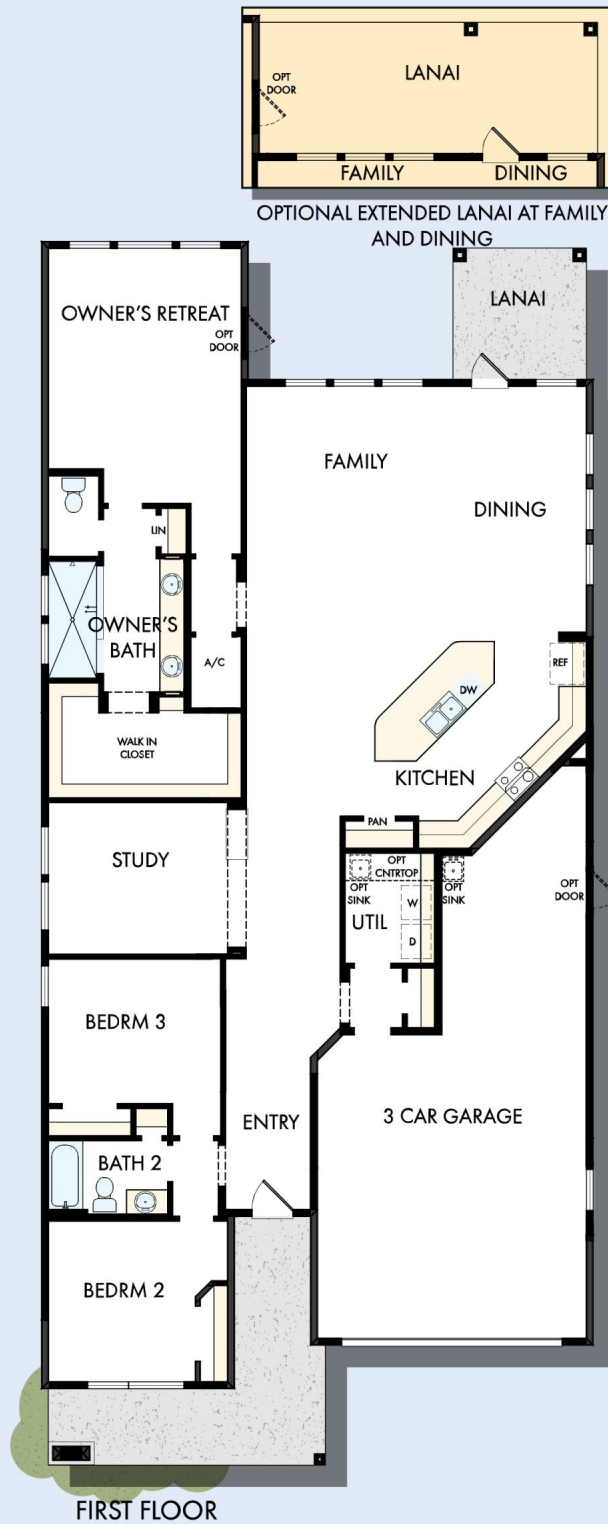


Exterior F

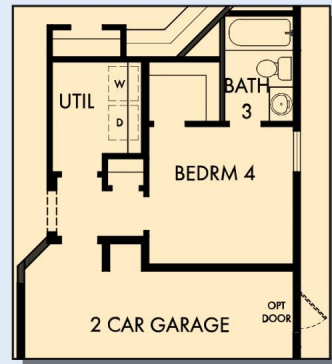
David Weekley  
Homes

# THE BRIGHTMAN

2,308 - 2,310 sq. ft. • 3 - 4 Bedrooms • 2 - 4 Full Baths • 2 - 3 Car Garage



OPTIONAL FLEX/HOBBY AT GARAGE



OPTIONAL BEDROOM 4 WITH BATH 3 AT GARAGE



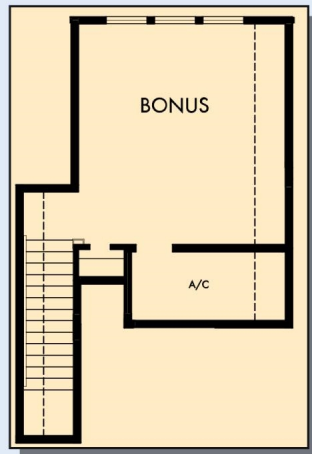
FIRST FLOOR WITH OPTIONAL SECOND FLOOR BONUS



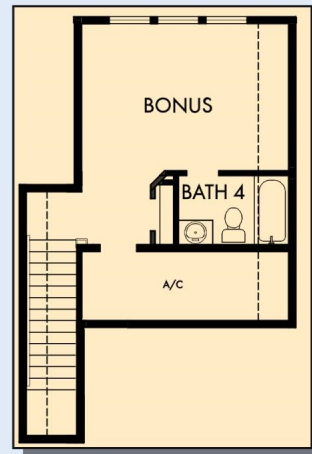
OPTIONAL SLIP IN TUB WITH SEPARATE SHOWER AT OWNER'S BATH



# THE BRIGHTMAN



OPTIONAL SECOND FLOOR BONUS



OPTIONAL SECOND FLOOR BONUS  
WITH BATH 4

For additional options, please visit [DavidWeekleyHomes.com](http://DavidWeekleyHomes.com)



See a David Weekley Homes Sales Consultant for details. Prices, plans, dimensions, features, specifications, materials, and availability of homes or communities are subject to change without notice or obligation. Illustrations are artist's depictions only and may differ from completed improvements. Copyright © 2022 David Weekley Homes - All Rights Reserved. Jacksonville, FL

## DavidWeekleyHomes.com