

THE WOODWIND



6453 SLC - A

Exterior A



6453 SLC - B

Exterior B

1,721 - 1,722 sq. ft.

3 Bedrooms

2 Full Baths

1 Half Bath

2 Car Garage

Rich C.



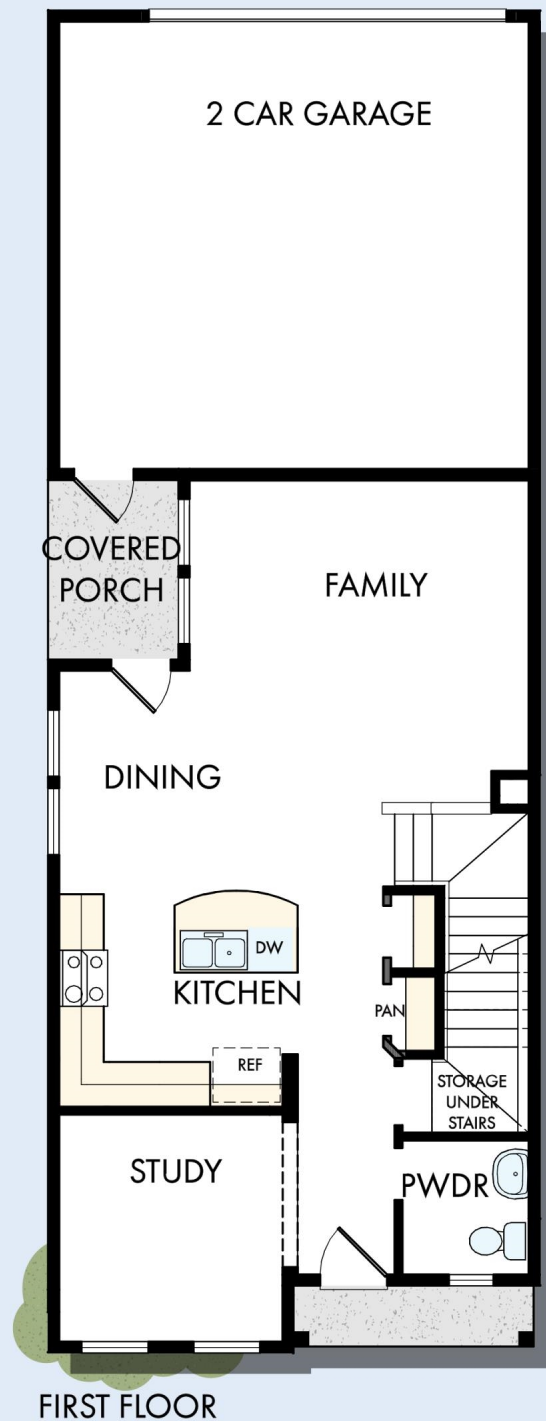
Wonderful Experience!

If there is anything that sets David Weekley apart from other builders it is their customer service. I felt like a member of the family from the first time I walked into the model, to when I received my keys and saw the wonderful housewarming presents that were left for me, up to the present when I see my salesman in the neighborhood. I felt like they really took the time to understand what I was looking for and then came through with my dream home. I would highly recommend David Weekley to anyone looking to buy and/or build a home.

**David Weekley
Homes**

THE WOODWIND

1,721 - 1,722 sq. ft. • 3 Bedrooms • 2 Full Baths • 1 Half Bath • 2 Car Garage



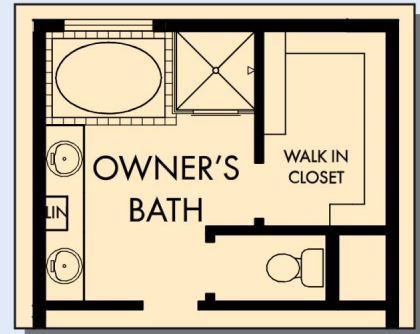
6453 in 5313 SLC

For additional options, please visit DavidWeekleyHomes.com

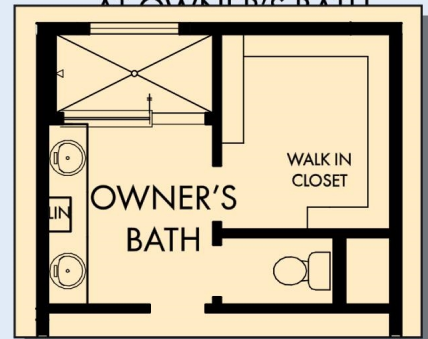
9/24/2019

DavidWeekleyHomes.com

THE WOODWIND



OPTIONAL SEPARATE
TUB & SOWER
AT OWNER'S BATH

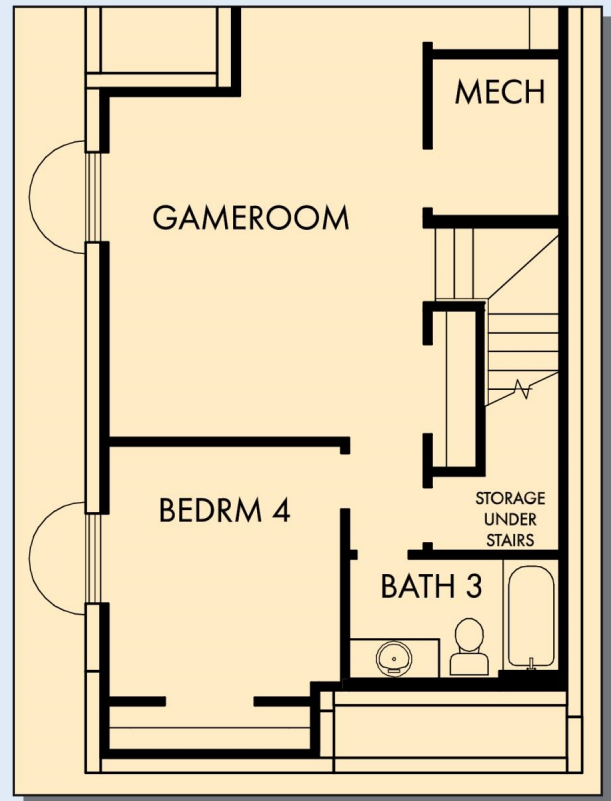
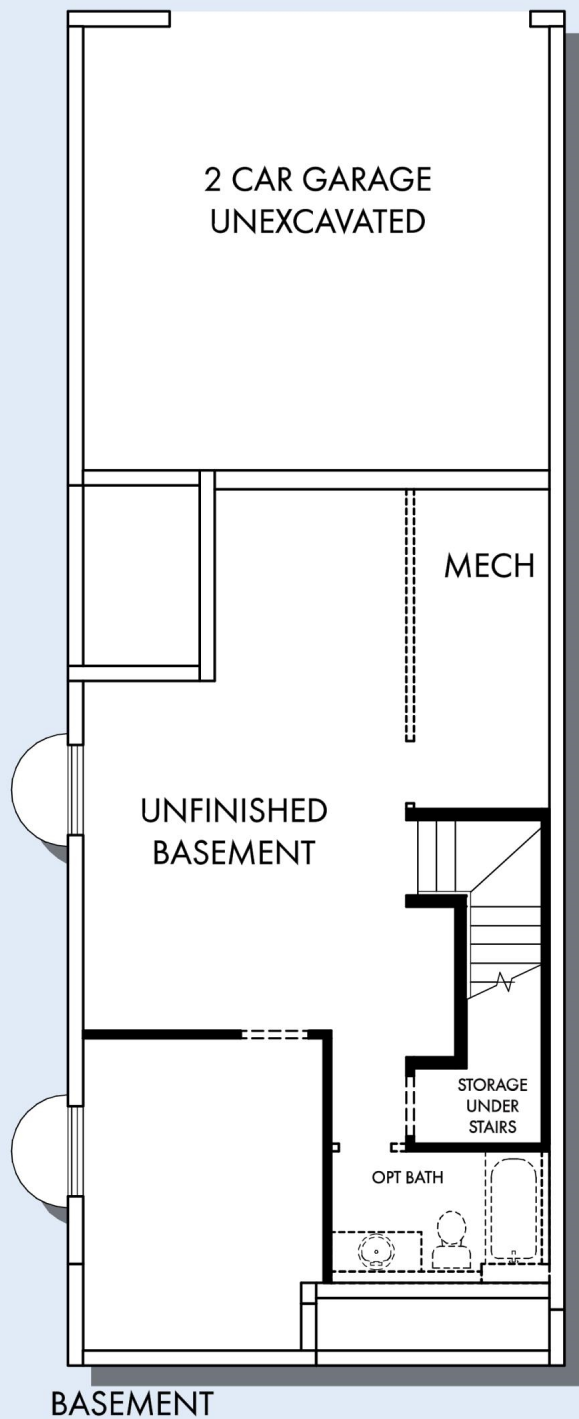


OPTIONAL SUPER SHOWER
AT OWNER'S BATH

For additional options, please visit DavidWeekleyHomes.com

DavidWeekleyHomes.com

THE WOODWIND



OPTIONAL GAMEROOM WITH
BEDROOM 4 & BATH 3
AT UNFINISHED BASEMENT

For additional options, please visit DavidWeekleyHomes.com



See a David Weekley Homes Sales Consultant for details. Prices, plans, dimensions, features, specifications, materials, and availability of homes or communities are subject to change without notice or obligation. Illustrations are artist's depictions only and may differ from completed improvements. Copyright © 2019 David Weekley Homes - All Rights Reserved. Salt Lake City, UT

DavidWeekleyHomes.com