

# THE MARITIME



Exterior A

2,350 - 2,380 sq. ft.

3 - 5 Bedrooms

2 - 4 Full Baths

1 Half Bath

2 Car Garage



Exterior B



Exterior C

David Weekley  
Homes

# THE MARITIME

2,350 - 2,380 sq. ft. • 3 - 5 Bedrooms • 2 - 4 Full Baths • 1 Half Bath • 2 Car Garage



A060 in 4918 JAC

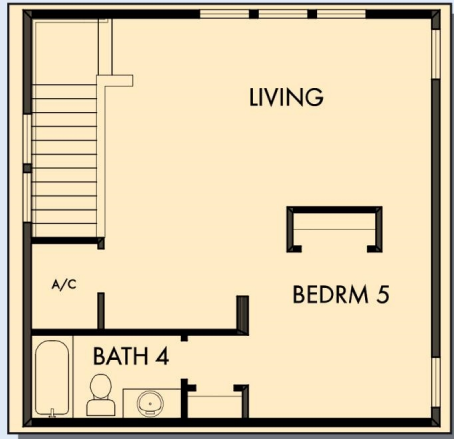
For additional options, please visit [DavidWeekleyHomes.com](http://DavidWeekleyHomes.com)

10/25/2024

**DavidWeekleyHomes.com**



# THE MARITIME



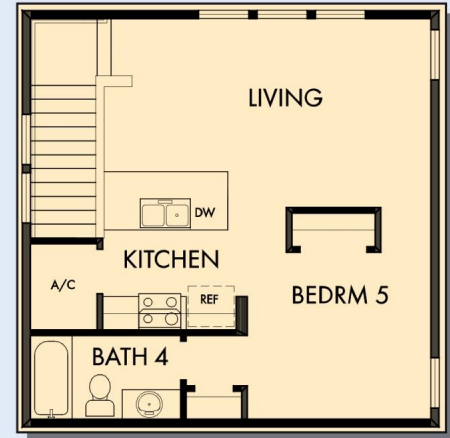
OPTIONAL RETREAT ABOVE GARAGE



OPTIONAL RETREAT WITH WET BAR ABOVE GARAGE



SECOND FLOOR



OPTIONAL RETREAT WITH KITCHEN ABOVE GARAGE



OPTIONAL SLIDE-IN TUB WITH SEPARATE SHOWER AT OWNER'S BATH



OPTIONAL FREE STANDING TUB WITH SEPARATE SHOWER AT OWNER'S BATH

For additional options, please visit [DavidWeekleyHomes.com](http://DavidWeekleyHomes.com)

See a David Weekley Homes Sales Consultant for details. Prices, plans, dimensions, features, specifications, materials, and availability of homes or communities are subject to change without notice or obligation. Illustrations are artist's depictions only and may differ from completed improvements. Copyright © 2024 David Weekley Homes - All Rights Reserved. Jacksonville, FL

**DavidWeekleyHomes.com**

