

THE WHEATLEY



Exterior B

2,426 sq. ft.

3 - 5 Bedrooms

2 - 3 Full Baths

1 Half Bath

2 - 3 Car Garage



Exterior C

Lauren L.



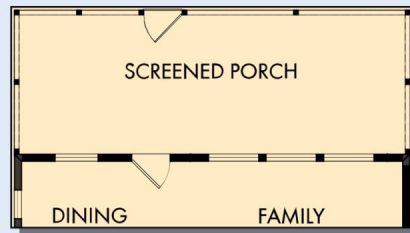
Home is where the heart is.

Years we waited to buy a house. Painful years of raising children in someone else's home. Years I got to ponder what it would be like to have something of my own. I envisioned my children sitting in their home, playing in their rooms, running through their yard...and the days of waiting were over, all of my research paid off. We bought the house of my dreams and were given the best sales associate and builder, down to my warranty specialist. Everything was easy and seamless. I felt like we were working together, like a team. Now, I have a beautiful house that I know was built with integrity. I could not be more grateful.

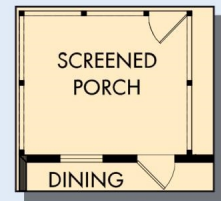
**David Weekley
Homes**

THE WHEATLEY

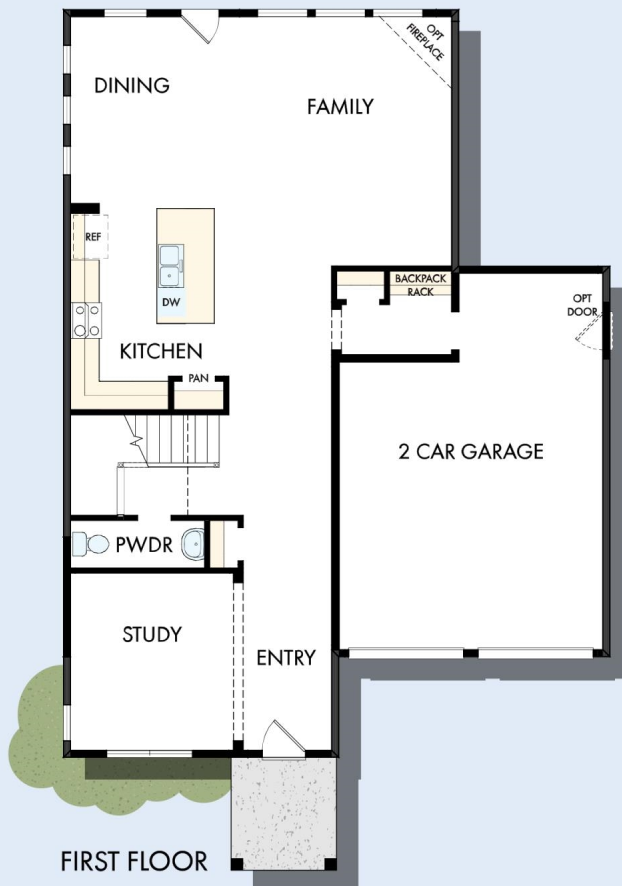
2,426 sq. ft. • 3 - 5 Bedrooms • 2 - 3 Full Baths • 1 Half Bath • 2 - 3 Car Garage



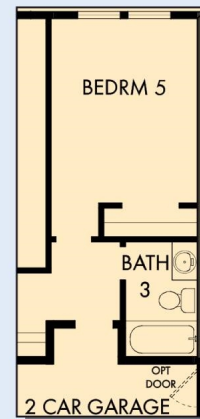
OPTIONAL EXTENDED SCREENED PORCH
AT DINING AND FAMILY



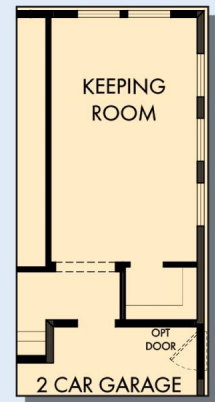
OPTIONAL SCREENED
PORCH AT DINING



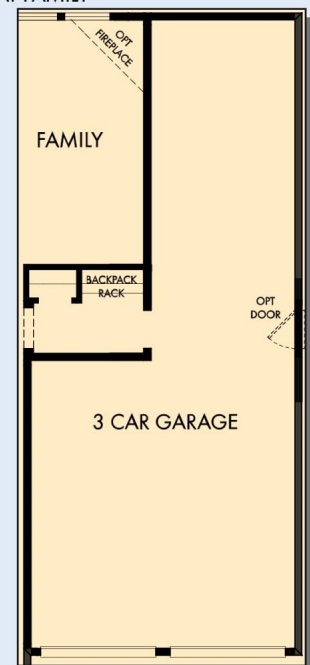
FIRST FLOOR



OPTIONAL BEDROOM 5
WITH BATH 3 AT FAMILY



OPTIONAL KEEPING
ROOM AT FAMILY



OPTIONAL 3 CAR GARAGE

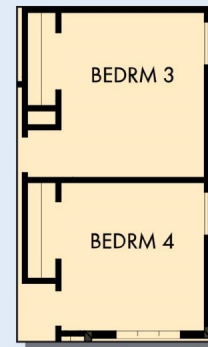
THE WHEATLEY



OPTIONAL DROP IN
TUB WITH SEPARATE
SHOWER AT
OWNER'S BATH



OPTIONAL SUPER
SHOWER AT
OWNER'S BATH



OPTIONAL BEDROOM 4
AT RETREAT



SECOND FLOOR

For additional options, please visit DavidWeekleyHomes.com



See a David Weekley Homes Sales Consultant for details.
Prices, plans, dimensions, features, specifications, materials,
and availability of homes or communities are subject to
change without notice or obligation. Illustrations are artist's
depictions only and may differ from completed improvements.
Copyright © 2021 David Weekley Homes - All Rights Reserved.
Charleston, SC

DavidWeekleyHomes.com